

LOC I-CAC 111.7	APP CRS 174°	Rwy Idg TDZE Apt Elev	6705 1530 1534
---------------------------	------------------------	-----------------------------	---


ILS or LOC RWY 17

NEWTON-CITY-COUNTY (E WK)

ADF required. DME required.

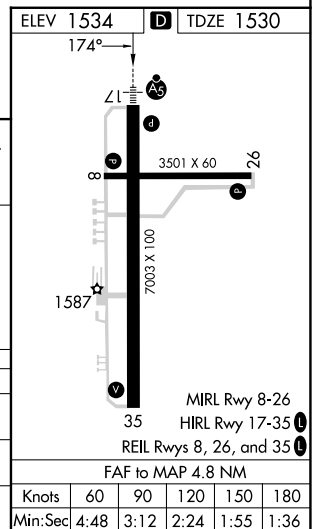
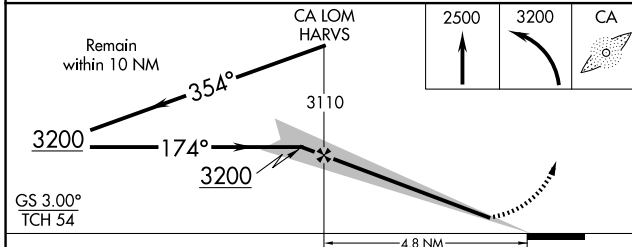
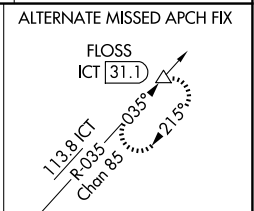
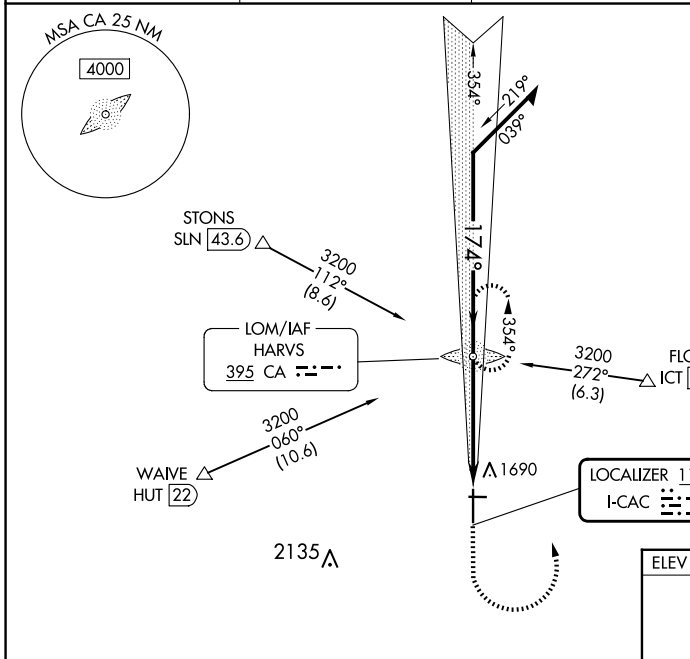
⚠ When local altimeter setting not received, use Wichita Dwight D Eisenhower Ntl altimeter setting: increase S-ILS 17 DA to 1817 feet; increase all MDAs 100 feet and visibility S-LOC 17 Cat C and D 1/2 SM and Circling Cat C 1/2 SM. For inop ALS, increase S-LOC 17 Cat C and D visibility to 1 1/2 SM. For inop ALS when using Wichita Dwight D Eisenhower Ntl altimeter setting, increase S-ILS 17 visibility to 1/2 SM and S-LOC 17 Cat C and D to 1 1/2 SM. Circling Rwy 8, 26 NA at night. Autopilot coupled approach NA below 2000.

MALSRL



MISSED APPROACH: Climb to 2500 then climbing left turn to 3200 direct HARVS LOM and hold.

AWOS-3PT 123.875	WICHITA APP CON 125.5 306.2	CLNC DEL 126.55	UNICOM 123.0 (CTAF)
----------------------------	---------------------------------------	---------------------------	-------------------------------



CATEGORY	A	B	C	D
S-ILS 17	1730-1/2 200 (200-1/2)			
S-LOC 17	2000-1/2 470 (500-1/2)	2000-1 470 (500-1)		
CIRCLING	2000-1 466 (500-1)	2000-1 1/2 466 (500-1 1/2)	2100-2 566 (600-2)	

NC-2, 15 MAY 2025 to 12 JUN 2025

NC-2, 15 MAY 2025 to 12 JUN 2025