

WAAS CH <b>65631</b> <b>W13A</b>	APP CRS <b>136°</b>	Rwy Idg <b>4498</b> TDZE <b>2130</b> Apt Elev <b>2131</b>
----------------------------------------	------------------------	-----------------------------------------------------------------

# RNAV (GPS) RWY 13

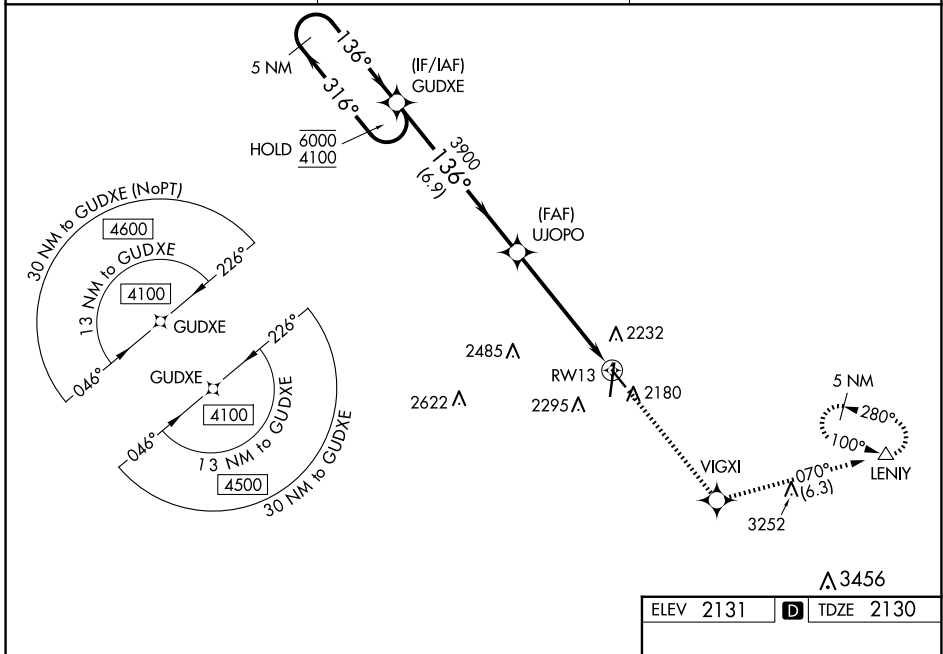
KEARNEY RGNL (E.A.R.)

RNP APCH.

**⚠** Baro-VNAV and VDP NA when using Holdrege altimeter setting. For uncompensated Baro-VNAV systems, LNAV/VNAV NA below -23°C or above 54°C. When local altimeter setting not received, use Holdrege altimeter setting: increase LPV DA to 2407 feet and all Cats visibility  $\frac{1}{8}$  SM; increase LNAV/VNAV DA to 2457 feet and all Cats visibility  $\frac{3}{8}$  SM and all MDAs 80 feet; increase visibility LNAV and Circling Cat C  $\frac{1}{8}$  SM.

MISSED APPROACH: Climb to 4300 direct VIGXI and on track 070° to LENIY and hold.

AWOS-3PT <b>123.875</b>	MINNEAPOLIS CENTER <b>119.4 278.8</b>	UNICOM <b>123.0 (CTAF) 1</b>
----------------------------	------------------------------------------	---------------------------------



NC-2, 15 MAY 2025 to 12 JUN 2025

NC-2, 15 MAY 2025 to 12 JUN 2025

5 NM Holding Pattern		VGSI and RNAV glidepath not coincident (VGSI Angle 3.00/TCH 43).		4300 VIGXI	LENIY
GUDXE		UJOPO		tr 070°	△
6000 ← 316°	4100 → 136°	3900		*1.5 NM to RWY 13	
GP 3.00° TCH 43		3900		*LNAV only	
		6.9 NM		3.9 NM	
				1.5 NM	
CATEGORY	A	B	C	D	
LPV DA	2330- $\frac{3}{4}$		200 (200- $\frac{3}{4}$ )	NA	
LNAV/VNAV DA	2380- $\frac{3}{4}$		250 (300- $\frac{3}{4}$ )	NA	
LNAV MDA	2720-1	590 (600-1)	2720-1 $\frac{3}{4}$ 590 (600-1 $\frac{3}{4}$ )	NA	
CIRCLING	2720-1	589 (600-1)	2720-1 $\frac{3}{4}$ 589 (600-1 $\frac{3}{4}$ )	NA	

