

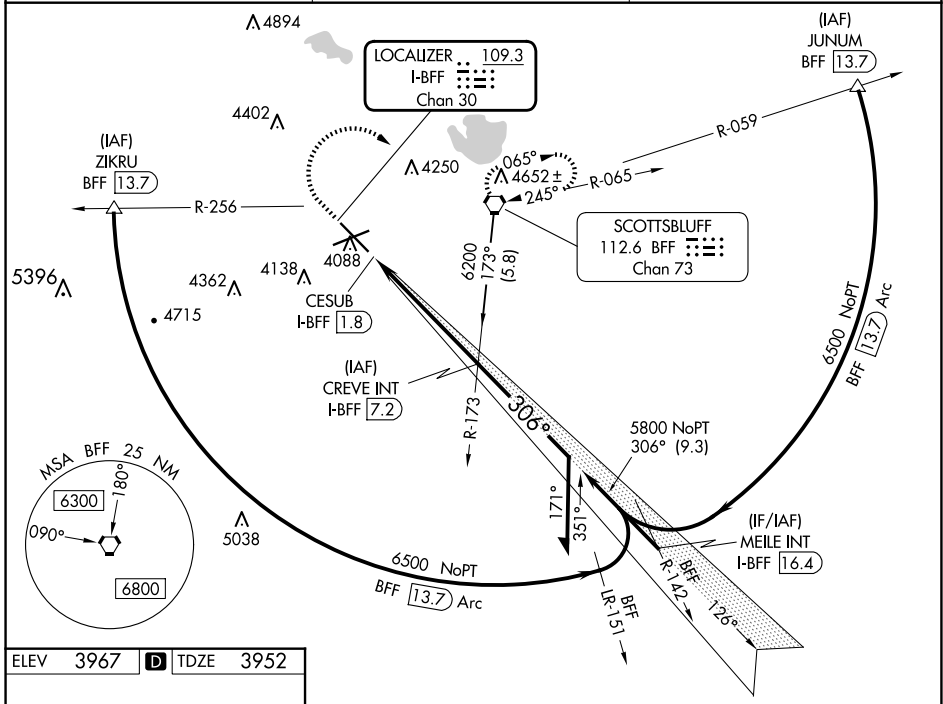
LOC/DME I-BFF 109.3 Chan 30	APP CRS 306°	Rwy Idg 8279 TDZE 3952 Apt Elev 3967
---	------------------------	---

ILS or LOC RWY 30

SCOTTSBLUFF/WESTERN NEBRASKA RGNL/WM B HEILIG FLD (B'F'F')

<p>▼</p> <p>▲ For inop ALS, increase S-LOC 30 Cats C and D visibility to 1 SM.</p>	<p>MALSR</p>	<p>MISSED APPROACH: Climb to 5800 then climbing right turn to 6200 direct BFF VORTAC and hold.</p>
--	--------------	--

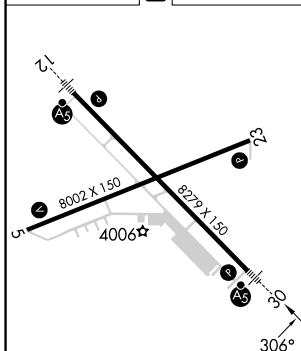
ASOS 121.025	DENVER CENTER 127.95 338.2	UNICOM 123.0 (CTAF) 0
------------------------	--------------------------------------	---------------------------------



NC-2, 15 MAY 2025 to 12 JUN 2025

NC-2, 15 MAY 2025 to 12 JUN 2025

ELEV 3967	D	TDZE 3952
------------------	----------	------------------



Profile view details: Vertical profile showing altitudes 5800, 6200, BFF. Angles 126° and 306°. Horizontal distance 4.7 NM. GS 3.00°, TCH 53. *LOC only.

HIRL Rwy 12-30 0					
MIRL Rwy 5-23 0					
FAF to MAP 5.4 NM					
Knots	60	90	120	150	180
Min:Sec	5:24	3:36	2:42	2:10	1:48

CATEGORY	A	B	C	D
S-ILS 30	4152-½ 200 (200-½)			
S-LOC 30	4300-½ 348 (400-½)		4300-⅝ 348 (400-⅝)	
C CIRCLING	4500-1 533 (600-1)		4560-1½ 593 (600-1½)	
			4740-2½ 773 (800-2½)	

ILS or LOC RWY 30