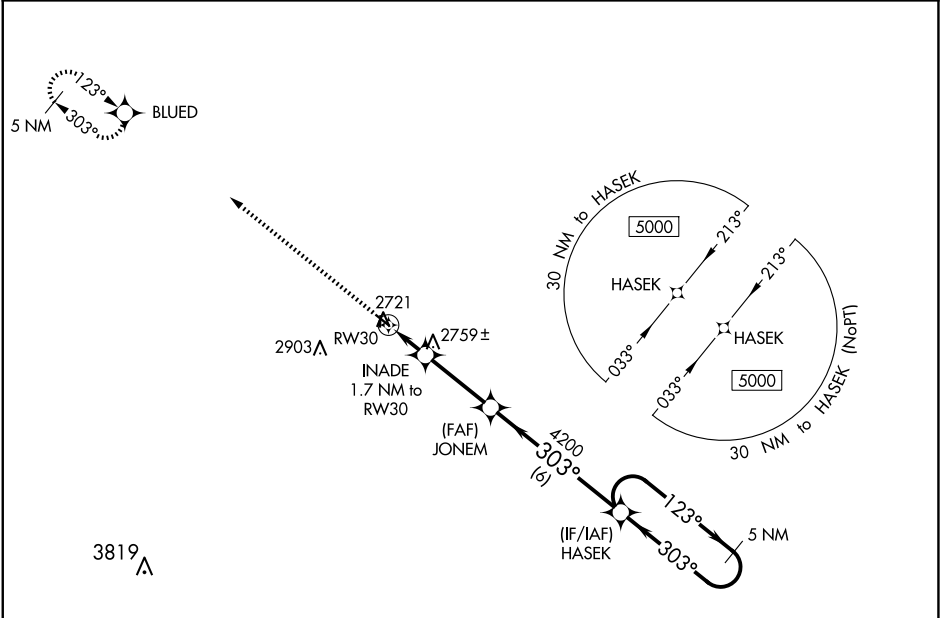


WAAS CH <b>69436</b> <b>W30A</b>	APP CRS <b>303°</b>	Rwy Idg TDZE Apt Elev	<b>3402</b> <b>2677</b> <b>2677</b>
--	------------------------	-----------------------------	---

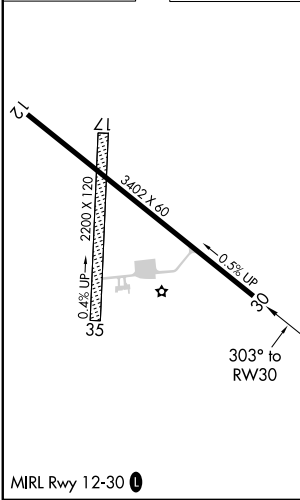
# RNAV (GPS) RWY 30

CURTIS MUNI (47V)

<p><b>NA</b> Baro-VNAV NA. Use Mc Cook altimeter setting; when not received, use North Platte altimeter setting and increase all DA 10 feet and all MDA 20 feet. DME/DME RNP-0.3 NA. Night landing: Rwys 17, 35 NA.</p>	<p>MISSED APPROACH: Climb to 5000 direct BLUED and hold.</p>	
<p>MCK ASOS <b>119.025</b></p>	<p>DENVER CENTER <b>132.7 226.675</b></p>	<p>CTAF <b>122.9</b></p>



ELEV 2677	TDZE 2677
-----------	-----------



5000	BLUED	HASEK	5 NM Holding Pattern	
*LNAV only	INADE 1.7 NM to RW30	JONEM 4200	HASEK 4200	
	3240*	303°	123° → 5000	
	← 303°		← 303°	
	← 1.7 NM	← 3 NM	← 6 NM	
			GP 3.00° TCH 40	
CATEGORY	A	B	C	D
LPV DA	3002-1½	325 (400-1½)		NA
LNAV/VNAV DA	3002-1½	325 (400-1½)		NA
LNAV MDA	3100-1	423 (500-1)		NA
<b>C</b> CIRCLING	3200-1 523 (600-1)	3380-1 703 (800-1)		NA

NC-2, 15 MAY 2025 to 12 JUN 2025

NC-2, 15 MAY 2025 to 12 JUN 2025