

| | | |
|-------------|----------|-------------|
| APP CRS | Rwy Idg | 3498 |
| 355° | TDZE | 1102 |
| | Apt Elev | 1102 |

RNAV (GPS) RWY 36

FREEMAN FLD (3JC)

RNP APCH.

▼ Circling Rwy 5, 23, 13, 31 NA. Circling NA west of Rwy 18-36.

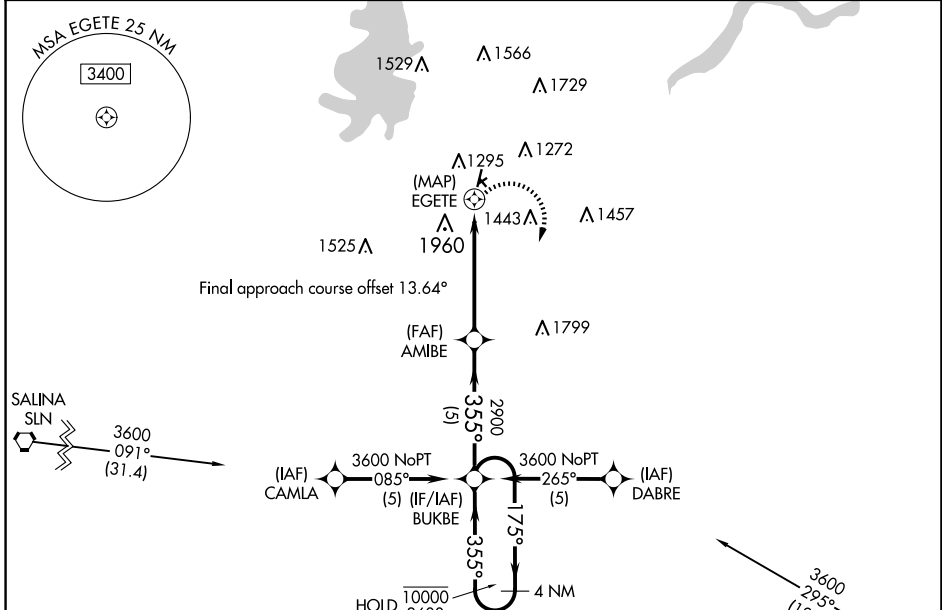
▲ NA Procedure NA at night. Rwy 36 helicopter visibility reduction below 1 SM NA. Use Marshall AAF, KS altimeter setting.

❄ -23°C

MISSED APPROACH: Climbing right turn to 3600 direct BUKBE and hold.

MARSHALL AAF GCA*
121.25 269.05

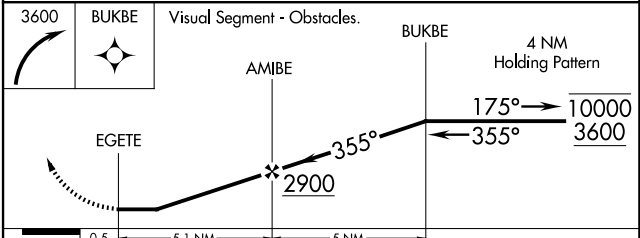
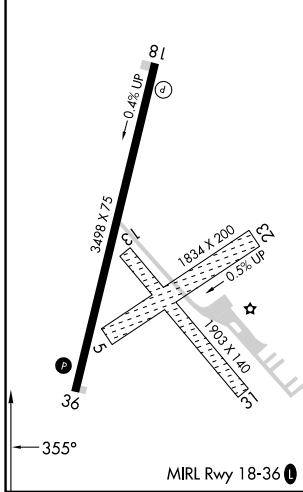
UNICOM
122.8 (CTAF) 1



NC-2, 15 MAY 2025 to 12 JUN 2025

NC-2, 15 MAY 2025 to 12 JUN 2025

| | |
|-----------|-----------|
| ELEV 1102 | TDZE 1102 |
|-----------|-----------|



| CATEGORY | A | B | C | D |
|-----------------|---------------------------|---------------------------|----|---|
| LNAV MDA | 2120-1¼ 1018 (1100-1¼) | 2120-1½ 1018 (1100-1½) | NA | |
| CIRCLING | 2120-1¼ 1018 (1100-1¼) | 2120-1½ 1018 (1100-1½) | NA | |