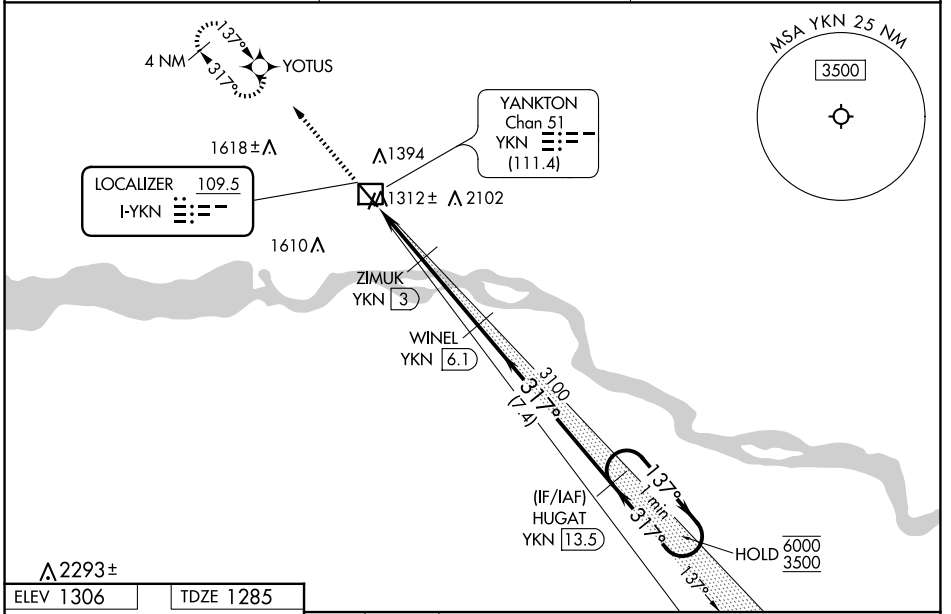


LOC I-YKN <b>109.5</b>	APP CRS <b>317°</b>	Rwy Idg <b>6094</b>
		TDZE <b>1285</b>
		Apt Elev <b>1306</b>

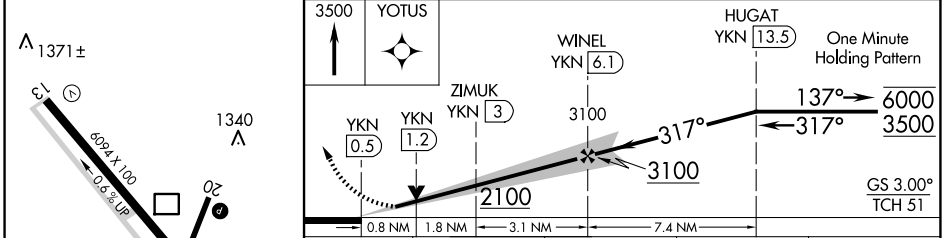
# ILS or LOC RWY 31

CHAN GURNEY MUNI (YKN)

RNP APCH - GPS.		MALSR 	MISSED APPROACH: Climb to 3500 direct YOTUS and hold, continue climb-in-hold to 3500.
DME required for LOC only. RADAR required for procedure entry.			
<p><b>NA</b> Circling NA east of Rwy 20 and northeast of Rwy 31. DME from YKN DME.</p> <p><b>NA</b> DME use requires simultaneous reception of I-YKN and YKN DME. For inop ALS, increase S-LOC 31 Cat C/D visibility to 2½ SM and increase ZIMUK fix minimums S-LOC 31 Cat C/D visibility to ¾ SM. * DME from YKN DME.</p>			
AWOS-3PT <b>119.05</b>	MINNEAPOLIS CENTER <b>125,025 235,625</b>	UNICOM <b>122.8 (CTAF)</b>	



ELEV 1306	TDZE 1285
-----------	-----------



CATEGORY	A	B	C	D
S-ILS 31	1485-½ 200 (200-½)			
S-LOC 31	2100-½ 815 (800-½)	2100-¾ 815 (800-¾)	2100-1⅞	815 (800-1⅞)
<b>C</b> CIRCLING	2100-1 794 (800-1)	2100-1¼ 794 (800-1¼)	2100-2½	794 (800-2½)
ZIMUK FIX MINIMUMS*				
S-LOC 31	1560-½ 275 (300-½)			
<b>C</b> CIRCLING	1760-1 454 (500-1)	1780-1 474 (500-1)	1980-2 674 (700-2)	1980-2¼ 674 (700-2¼)

- REIL Rwy 13 **1**
- HIRL Rwy 13-31 **1**
- MIRL Rwy 2-20 **1**

NC-1, 15 MAY 2025 to 12 JUN 2025

NC-1, 15 MAY 2025 to 12 JUN 2025