

WAAS CH 73034 W15A	APP CRS 147°	Rwy ldg 3220
	TDZE 1348	
	Apt Elev 1348	

RNAV (GPS) RWY 15

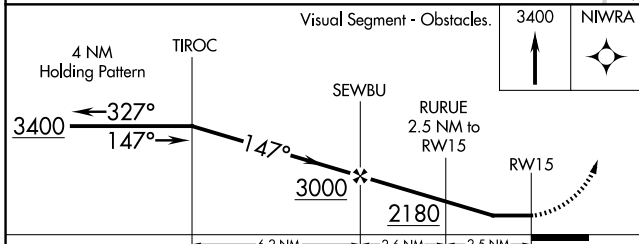
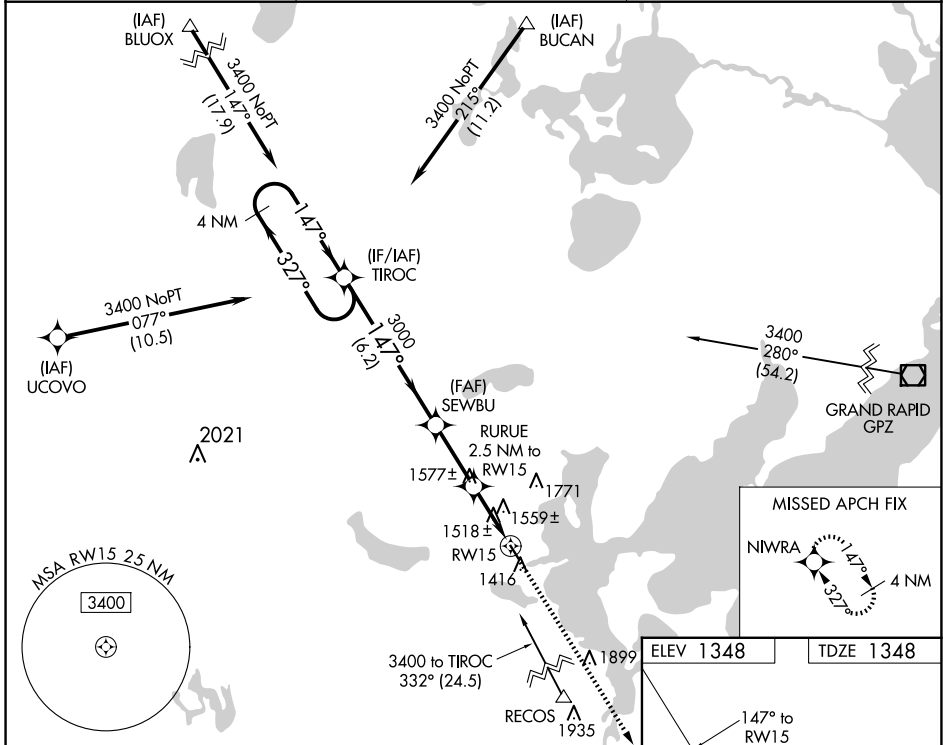
WALKER MUNI (Y49)

RNP APCH.

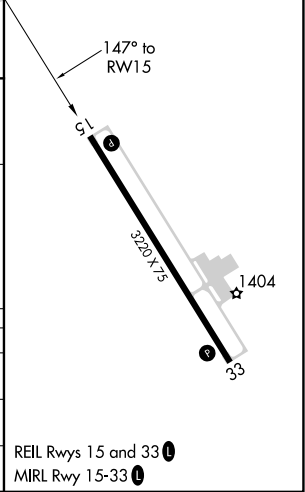
When local altimeter not received, use Longville altimeter setting and increase all MDA 60 feet; increase LP and LNAV Cat C visibility $\frac{1}{8}$ SM and Circling Cat C visibility $\frac{1}{4}$ SM. Procedure NA at night. Rwy 15 helicopter visibility reduction below 1 SM NA.

MISSED APPROACH: Climb to 3400 direct NIWRA and hold.

AWOS-3PT 119.0	MINNEAPOLIS CENTER 134.75 251.1	CTAF 122.90
--------------------------	---	-----------------------



ELEV 1348	TDZE 1348
-----------	-----------



CATEGORY	A	B	C	D
LP MDA	1780-1	432 (500-1)	1780-1 $\frac{1}{4}$ 432 (500-1 $\frac{1}{4}$)	NA
LNAV MDA	1820-1	472 (500-1)	1820-1 $\frac{3}{8}$ 472 (500-1 $\frac{3}{8}$)	NA
C CIRCLING	1860-1	512 (600-1)	2140-2 $\frac{1}{4}$ 792 (800-2 $\frac{1}{4}$)	NA

REIL Rwy 15 and 33
MIRL Rwy 15-33

NC-1, 15 MAY 2025 to 12 JUN 2025

NC-1, 15 MAY 2025 to 12 JUN 2025