

WAAS CH <b>49031</b> <b>W13A</b>	APP CRS <b>139°</b>	Rwy Idg <b>4399</b> TDZE <b>1942</b> Apt Elev <b>1944</b>
--	------------------------	---

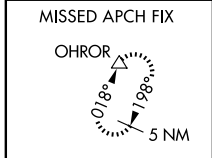
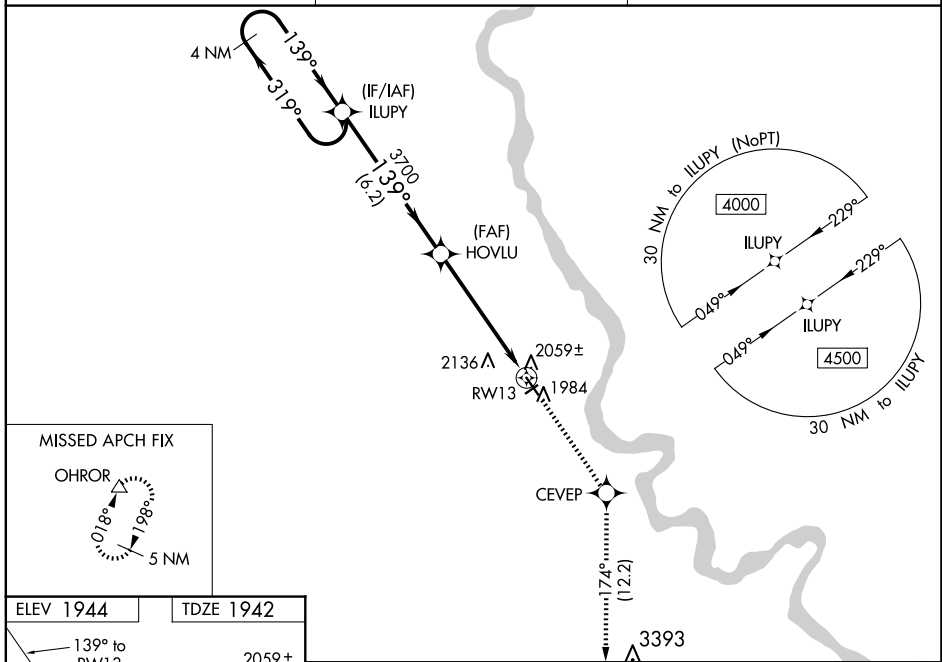
# RNAV (GPS) RWY 13

MANDAN RGNL/LAWLER FLD (Y19)

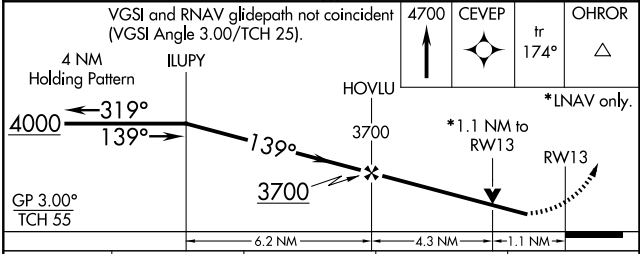
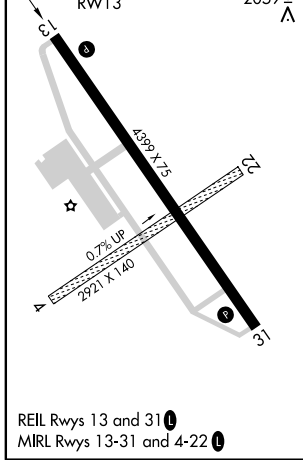
**ASR** Baro-VNAV NA when using Bismarck altimeter setting. For uncompensated Baro-VNAV systems, LNAV/VNAV NA below -18°C (0°F) or above 54°C (130°F). DME/DME RNP-0.3 NA. Helicopter visibility reduction below 3/4 SM not authorized. VDP NA when using Bismarck altimeter setting. When local altimeter setting not received, use Bismarck altimeter setting and increase all DA 54 feet and LPV all Cats visibility 1/4 mile, LNAV/VNAV all Cats visibility 1/8 mile, increase all MDA 60 feet and LNAV Cat C/D and Circling Cat D visibility 1/4 mile. Circling to Rwy 4 and 22 NA.

**MISSED APPROACH:** Climb to 4700 direct CEVEP and on track 174° to OHROR and hold.

AWOS-3 <b>118.225</b>	BISMARCK APP CON ★ <b>126.3 298.9</b>	UNICOM <b>122.8 (CTAF) 0</b>
--------------------------	--	---------------------------------



ELEV <b>1944</b>	TDZE <b>1942</b>
------------------	------------------



CATEGORY	A	B	C	D
LPV DA		2192-3/4	250 (300-3/4)	
LNAV/VNAV DA		2244-1	302 (300-1)	
LNAV MDA		2320-1	378 (400-1)	
<b>C</b> CIRCLING	2360-1 416 (500-1)	2460-1 516 (600-1)	2460-1½ 516 (600-1½)	2560-2 616 (700-2)

NC-1, 15 MAY 2025 to 12 JUN 2025

NC-1, 15 MAY 2025 to 12 JUN 2025