

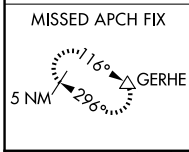
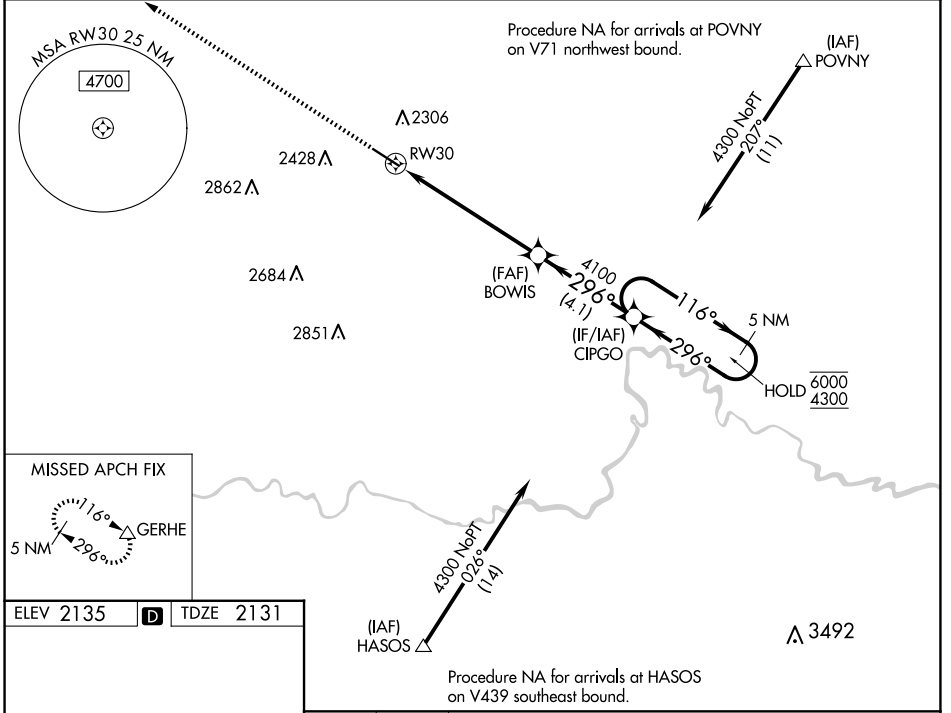
WAAS CH 69318 W30A	APP CRS 296°	Rwy Idg TDZE Apt Elev	5650 2131 2135
--	------------------------	-----------------------------	---

RNAV (GPS) RWY 30

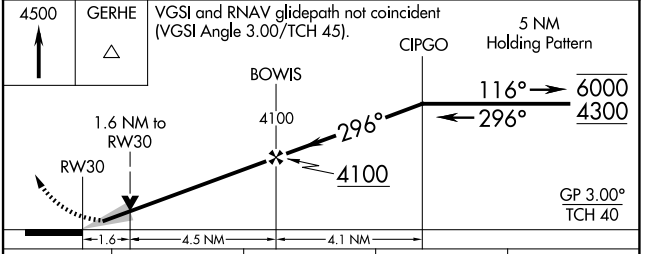
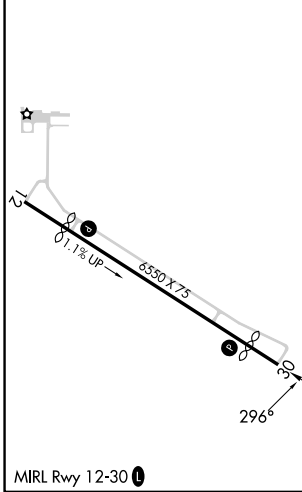
WATFORD CITY MUNI (S25)

RNP APCH - GPS.		MISSED APPROACH: Climb to 4500 direct GERHE and hold.
<p>⚠ VDP NA when using Williston altimeter setting. When local altimeter setting not received, use Williston Basin Intl altimeter setting: increase LPV DA to 2488 feet; all visibility ¼ SM. Increase all MDAs 120 feet and LNAV visibility Cat C/D ¼ SM, and Circling visibility Cat C/D ½ SM.</p>		

AWOS-3PT 118.125	SALT LAKE CENTER 126.85 305.2	UNICOM 122.8 (CTAF) 0
----------------------------	---	---------------------------------



ELEV 2135	D	TDZE 2131
-----------	----------	-----------



CATEGORY	A	B	C	D
LPV DA	2381-¾		250 (300-¾)	
LNAV MDA	2680-1	549 (600-1)	2680-1½	549 (600-1½)
C CIRCLING	2700-1 565 (600-1)	2760-1 625 (700-1)	2760-1¾ 625 (700-1¾)	2960-2¾ 825 (900-2¾)

NC-1, 15 MAY 2025 to 12 JUN 2025

NC-1, 15 MAY 2025 to 12 JUN 2025