

WAAS CH <b>53404</b> <b>W13A</b>	APP CRS <b>133°</b>	Rwy ldg TDZE Apt Elev	<b>6900</b> <b>1731</b> <b>1744</b>
--	------------------------	-----------------------------	---

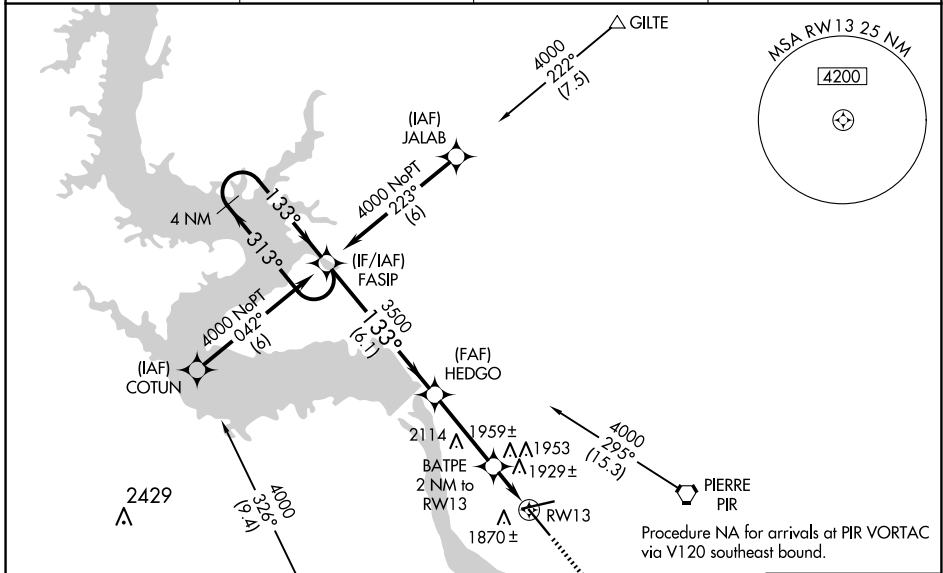
# RNAV (GPS) RWY 13

PIERRE RGNL (PIR)

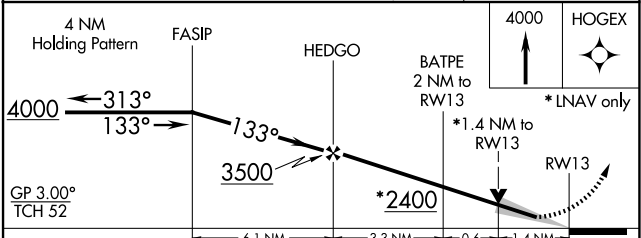
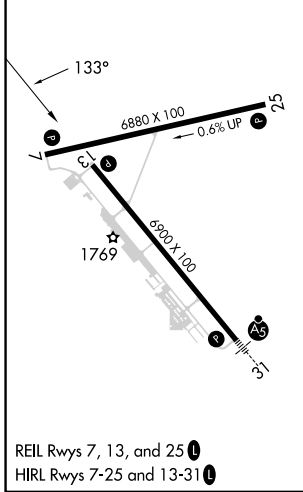
**⚠** For uncompensated Baro-VNAV systems, LNAV/VNAV NA below -18°C (0°F) or above 45°C (113°F). DME/DME RNP-0.3 NA.

**⚠** MISSED APPROACH: Climb to 4000 direct HOGEX and hold.

ASOS <b>119.025</b>	MINNEAPOLIS CENTER <b>125.1 269.1</b>	CTAF <b>122.7</b>	UNICOM <b>122.95</b>
------------------------	--	----------------------	-------------------------



ELEV 1744	<b>D</b>	TDZE 1731
-----------	----------	-----------



CATEGORY	A	B	C	D
LPV DA	1981- <sup>3</sup> / <sub>4</sub> 250 (300- <sup>3</sup> / <sub>4</sub> )			
LNAV/VNAV DA	2285-2 554 (600-2)			
LNAV MDA	2220-1	489 (500-1)	2220-1 <sup>1</sup> / <sub>4</sub> 489 (500-1 <sup>1</sup> / <sub>4</sub> )	2220-1 <sup>1</sup> / <sub>2</sub> 489 (500-1 <sup>1</sup> / <sub>2</sub> )
<b>C</b> CIRCLING	2240-1 496 (500-1)	2300-1 556 (600-1)	2400-1 <sup>3</sup> / <sub>4</sub> 656 (700-1 <sup>3</sup> / <sub>4</sub> )	2460-2 <sup>1</sup> / <sub>4</sub> 716 (800-2 <sup>1</sup> / <sub>4</sub> )

NC-1, 15 MAY 2025 to 12 JUN 2025

NC-1, 15 MAY 2025 to 12 JUN 2025