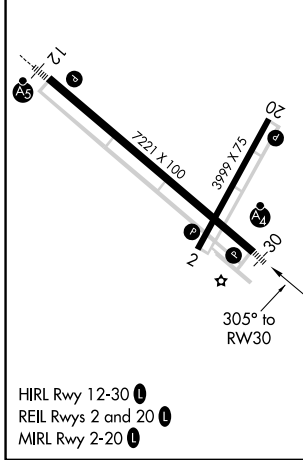
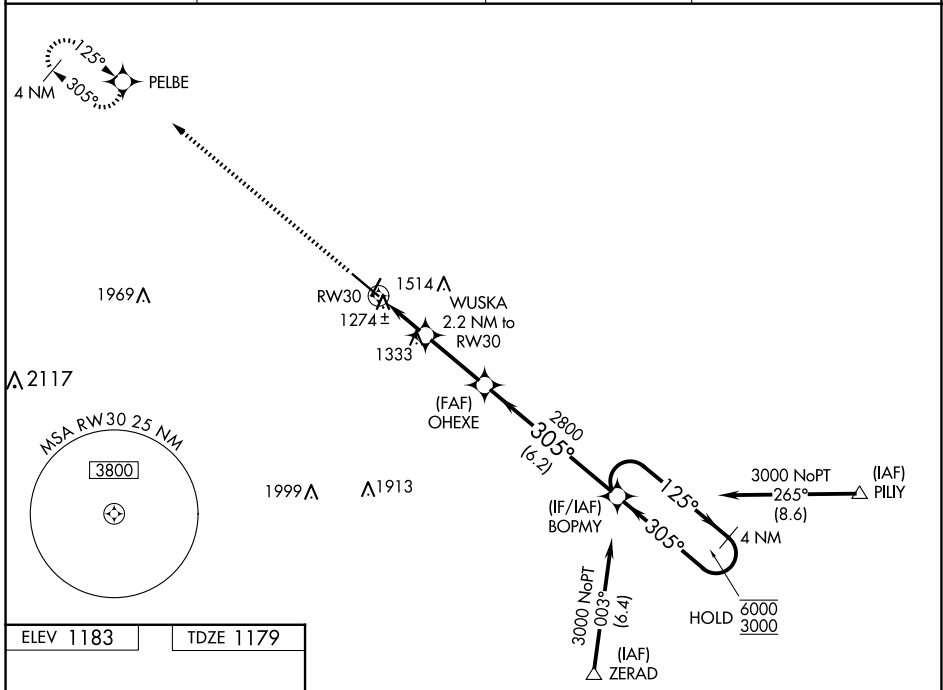


|  |                        |   |
|--|------------------------|---|
| WAAS<br>CH <b>86321</b><br><b>W30A</b> | APP CRS<br><b>305°</b> | Rwy Idg <b>7221</b><br>TDZE <b>1179</b><br>Apt Elev <b>1183</b> |
|--|------------------------|---|

# RNAV (GPS) RWY 30

SOUTHWEST MINNESOTA RGNL MARSHALL/RYAN FLD (MML)

|                            |  |                       |   |
|----------------------------|--|-----------------------|---|
| RNP APCH - GPS             |  | MALSF                 | MISSED APPROACH:<br>Climb to 3200 direct<br>PELBE and hold. |
| AWOS-3PT<br><b>120.150</b> | MINNEAPOLIS CENTER<br><b>127.1 290.2</b> | GCO<br><b>121.725</b> | UNICOM<br><b>122.8 (CTAF) 0</b>                             |



|  |                                   |   |  |                       |  |
|--|-----------------------------------|---|--|-----------------------|--|
| ELEV 1183                                    | TDZE 1179                         | 3200 PELBE VGSi and RNAV glidepath not coincident (VGSi Angle 3.00/TCH 32).   |  |                       |  |
|  |                                   | BOPMY 4 NM Holding Pattern<br>OHEXE 2800<br>WUSKA 2.2 NM to RWY 30<br>RWY 30 1.2 NM to RWY 30<br>1900<br>2800<br>125° → 6000<br>← 305° 3000<br>GP 3.00°<br>TCH 40 |  |                       |  |
| CATEGORY                                     | A                                 | B   | C  | D                     |  |
| LPV DA                                       | 1429- <sup>3</sup> / <sub>4</sub> |   | 250 (300- <sup>3</sup> / <sub>4</sub> )  |                       |  |
| LNAV/VNAV DA                                 | 1464- <sup>3</sup> / <sub>4</sub> |   | 285 (300- <sup>3</sup> / <sub>4</sub> )  |                       |  |
| LNAV MDA                                     | 1600- <sup>3</sup> / <sub>4</sub> | 421 (500- <sup>3</sup> / <sub>4</sub> )   | 1600-1   | 421 (500-1)           |  |
| <input checked="" type="checkbox"/> CIRCLING | 1640-1                            | 457 (500-1)   | 1820-1 <sup>3</sup> / <sub>4</sub><br>637 (700-1 <sup>3</sup> / <sub>4</sub> ) | 1840-2<br>657 (700-2) |  |

# RNAV (GPS) RWY 30

NC-1, 15 MAY 2025 to 12 JUN 2025

NC-1, 15 MAY 2025 to 12 JUN 2025