

APP CRS	Rwy Idg	<b>4410</b>
<b>118°</b>	TDZE	<b>1703</b>
	Apt Elev	<b>1715</b>

# RNAV (GPS) RWY 12

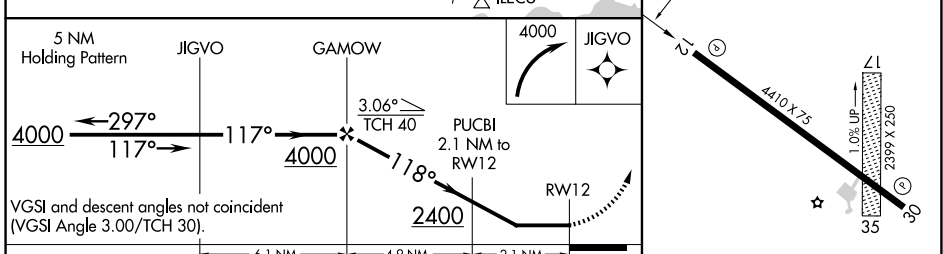
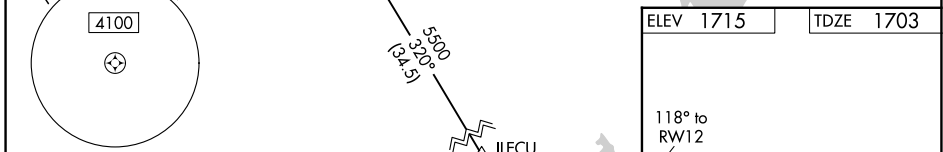
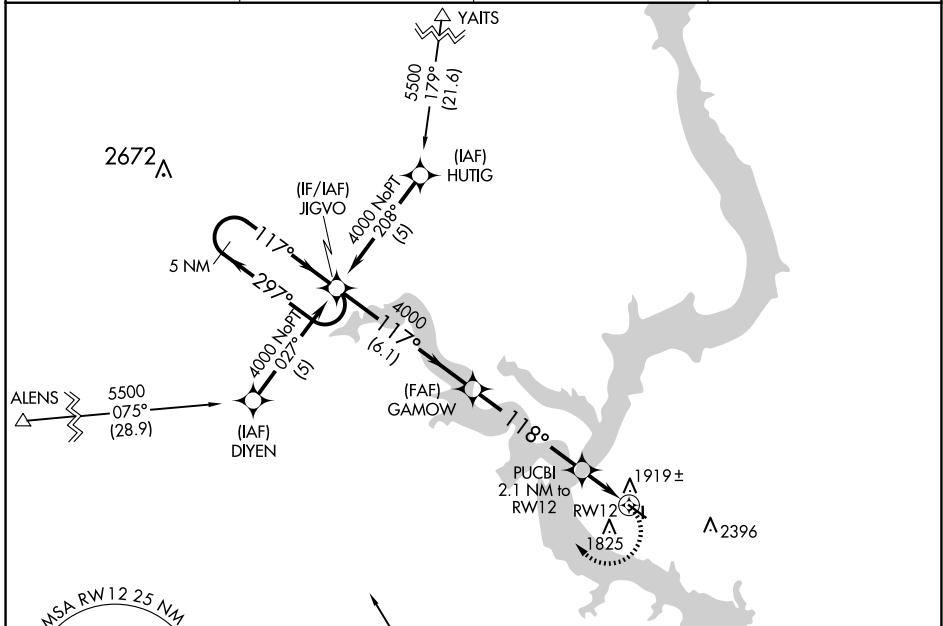
MOBRIDGE MUNI (MBG)

RNP APCH-GPS.

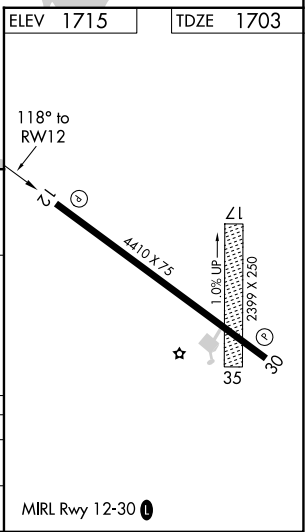
**▼** Rwy 12 helicopter visibility reduction below 1 SM NA. If local altimeter setting not received, use Pierre Rgnl altimeter setting and increase all MDAs 180 feet. Circling NA for Cat C and D northeast of Rwy 12-30. Procedure NA at night. Circling NA to Rwys 17 and 35.

**▲** MISSED APPROACH: Climbing right turn to 4000 direct JIGVO and hold.

ASOS <b>121.425</b>	MINNEAPOLIS CENTER <b>135.25 256.7</b>	GCO <b>121.725</b>	UNICOM <b>122.8 (CTAF) 0</b>
------------------------	---	-----------------------	---------------------------------



CATEGORY	A	B	C	D
LNAV MDA	2260-1	557 (600-1)	2260-1½ 557 (600-1½)	2260-1¾ 557 (600-1¾)
CIRCLING	2360-1	645 (700-1)	2360-1¾ 645 (700-1¾)	2560-2¾ 845 (900-2¾)



NC-1, 15 MAY 2025 to 12 JUN 2025

NC-1, 15 MAY 2025 to 12 JUN 2025