

WAAS CH <b>69419</b> <b>W13A</b>	APP CRS <b>136°</b>	Rwy Idg TDZE Apt Elev	<b>4002</b> <b>1140</b> <b>1140</b>
--	------------------------	-----------------------------	---

# RNAV (GPS) RWY 13

LITCHFIELD MUNI (LJF)

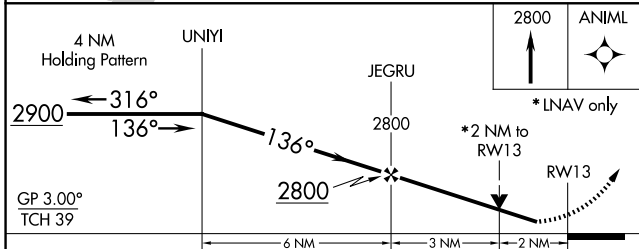
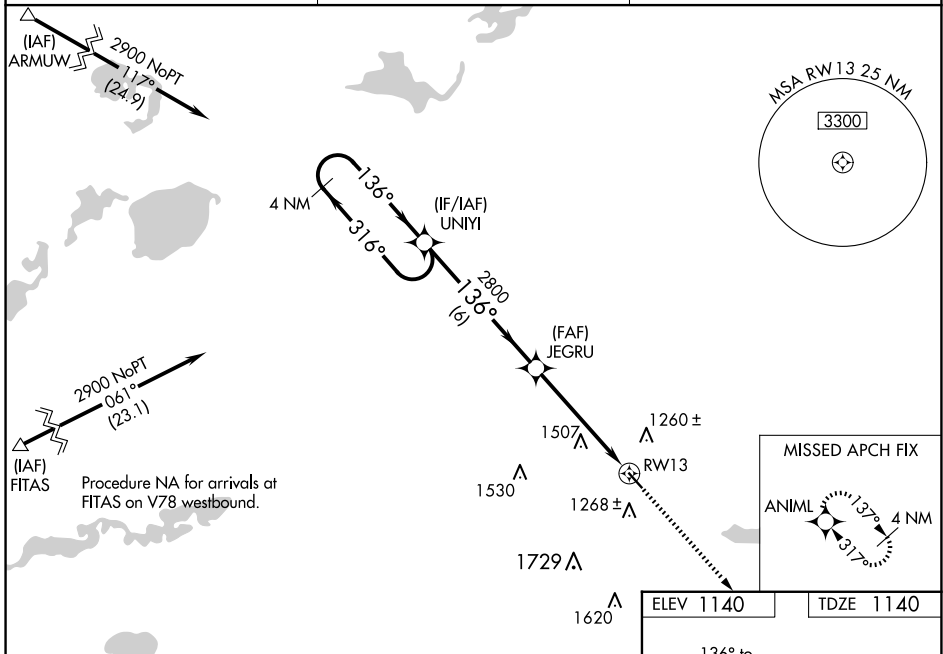
RNP APCH - GPS.

▼ Baro-VNAV NA when using Hutchinson altimeter setting. For uncompensated Baro-VNAV systems, LNAV/VNAV NA below -17°C or above 54° C. Visibility reduction by helicopters

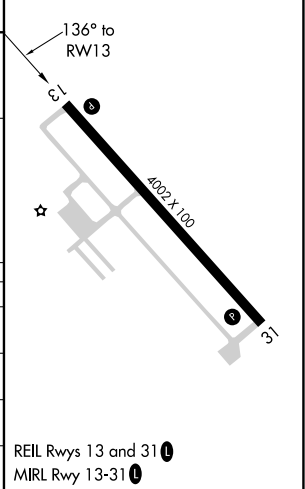
▲ NA. When local altimeter setting not received, use Hutchinson altimeter setting: increase LPV DA to 1436 feet; increase LNAV/VNAV DA to 1980 feet and visibility all Cats ¼ SM; increase all MDA 60 feet and Circling Cat C visibility ¼ SM. VDP NA with Hutchinson altimeter setting.

MISSED APPROACH:  
Climb to 2800 direct ANIML and hold.

AWOS-3 <b>119.65</b>	MINNEAPOLIS CENTER <b>125.5 323.1</b>	CTAF <b>122.9 0</b>
-------------------------	--	------------------------



ELEV 1140	TDZE 1140
-----------	-----------



CATEGORY	A	B	C	D
LPV DA	1390-1 250 (300-1)			
LNAV/VNAV DA	1934-2¾ 794 (800-2¾)			
LNAV MDA	1820-1 680 (700-1)	1820-2 680 (700-2)	1820-2¼ 680 (700-2¼)	
CIRCLING	1820-1 680 (700-1)	1860-2 720 (800-2)	2080-3 940 (1000-3)	

NC-1, 15 MAY 2025 to 12 JUN 2025

NC-1, 15 MAY 2025 to 12 JUN 2025

REIL Rwy 13 and 31  
MIRL Rwy 13-31