

LOC I-INL 111.95	APP CRS 313°	Rwy Idg TDZE Apt Elev	7400 1166 1182
----------------------------	------------------------	-----------------------------	---

ILS or LOC RWY 31

FALLS INTL/EINARSON FLD (INL)

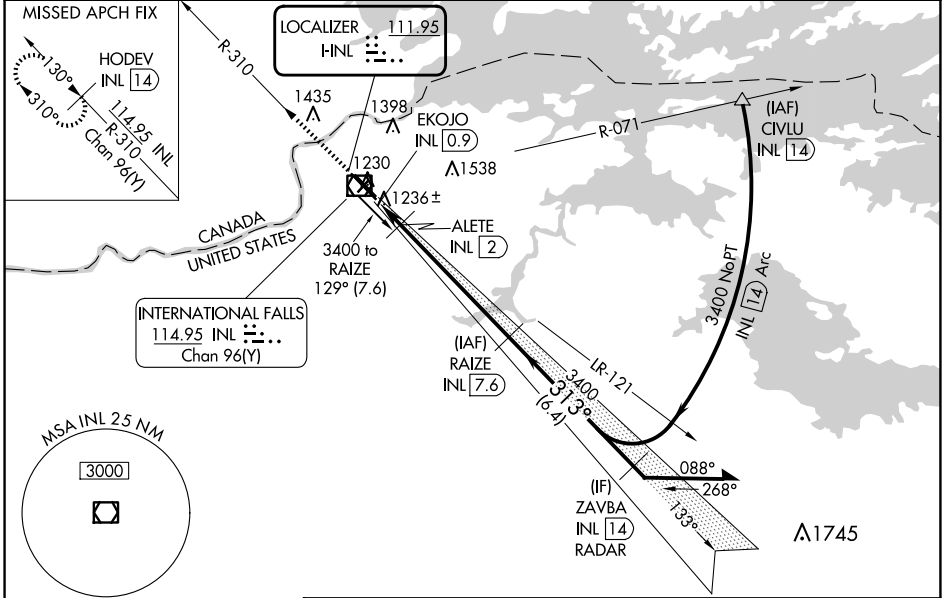
DME required.

MAFSR

MISSED APPROACH: Climb to 3300 on INL VOR/DME R-310 to HODEV/INL 14 DME and hold.

Circling Rwy 4, 22 NA at night.
 Autopilot coupled approach NA below 1731 feet.
 #DME from INL VOR/DME.

ASOS 120.0	MINNEAPOLIS CENTER 120.9 377.1	UNICOM 122.8 (CTAF)
----------------------	--	-------------------------------



ELEV 1182	D	TDZE 1166	3300	HODEV INL 14	RAIZE INL 7.6	Remain within 10 NM						
INL R-310		ALETE INL 2		3400		ZAVBA INL 14 RADAR		313°		3400	GS 3.00°	TCH 45
0.2		1.1 NM		5.6 NM		6.4 NM						
CATEGORY	A		B		C		D					
S-ILS 31	1366-½		200 (200-½)									
S-LOC 31	1620-½		454 (500-½)		1620-¾		454 (500-¾)					
C CIRCLING	1620-1		1680-1		1900-2		1900-2¼					
	438 (500-1)		498 (500-1)		718 (800-2)		718 (800-2¼)					
ALETE FIX MINIMUMS #												
S-LOC 31	1500-½		334 (400-½)									
C CIRCLING	1620-1		1680-1		1900-2		1900-2¼					
	438 (500-1)		498 (500-1)		718 (800-2)		718 (800-2¼)					

NC-1, 15 MAY 2025 to 12 JUN 2025

NC-1, 15 MAY 2025 to 12 JUN 2025