

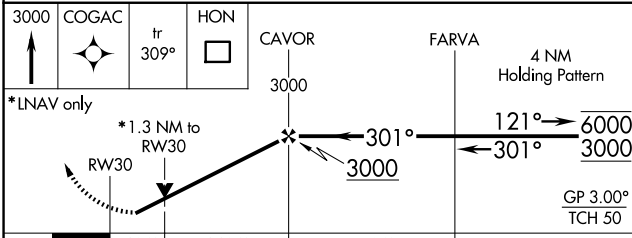
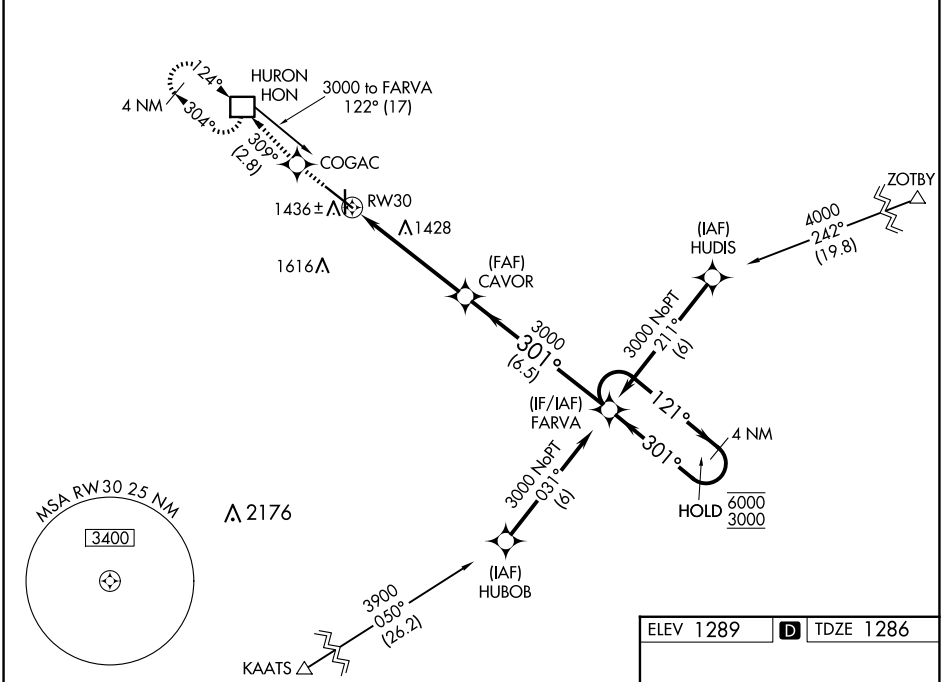
WAAS CH 77514 W30A	APP CRS 301°	Rwy Idg TDZE Apt Elev	7201 1286 1289
--	------------------------	-----------------------------	---

RNAV (GPS) RWY 30

HURON RGNL (HON)

RNP APCH.	MISSED APPROACH: Climb to 3000 direct COGAC and on track 309° to HON DME and hold.
<p>▼ Circling Rwy 18, 36 NA at night. Rwy 30 helicopter visibility reduction below 3/4 SM NA. For uncompensated Baro-VNAV systems, LNAV/VNAV NA below -17°C or above 54°C.</p>	

ASOS 118.125	MINNEAPOLIS CENTER 126.25 339.8	UNICOM 123.0 (CTAF) 0
------------------------	---	---------------------------------



ELEV 1289	D TDZE 1286
-----------	--------------------

The diagram shows the runway layout at Huron Regional Airport. RWY 12-30 is 5000 x 75 feet. RWY 18-36 is 36 feet wide. RWY 18, 30, and 36 are also shown. The diagram includes HIRL (High Intensity Runway Lighting) and MRL (Medium Intensity Runway Lighting) systems. The heading for RWY 30 is 301°.

CATEGORY	A	B	C	D
LPV DA	1559-1 273 (300-1)			
LNAV/VNAV DA	1721-1½ 435 (500-1½)			
LNAV MDA	1760-1 474 (500-1)	1760-1⅜ 474 (500-1⅜)	1760-1½ 474 (500-1½)	
C CIRCLING	1820-1 531 (600-1)	1920-1¾ 631 (700-1¾)	1980-2¼ 691 (700-2¼)	

NC-1, 15 MAY 2025 to 12 JUN 2025

NC-1, 15 MAY 2025 to 12 JUN 2025