


LOC/DME I-FAR <b>110.3</b> Chan <b>40</b>	APP CRS <b>356°</b>	Rwy Idg TDZE Apt Elev	<b>9001</b> <b>899</b> <b>901</b>
---	------------------------	-----------------------------	---

# ILS or LOC RWY 36

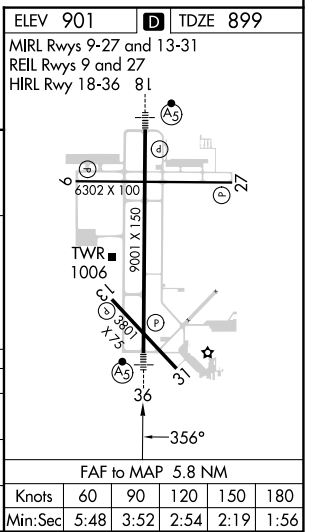
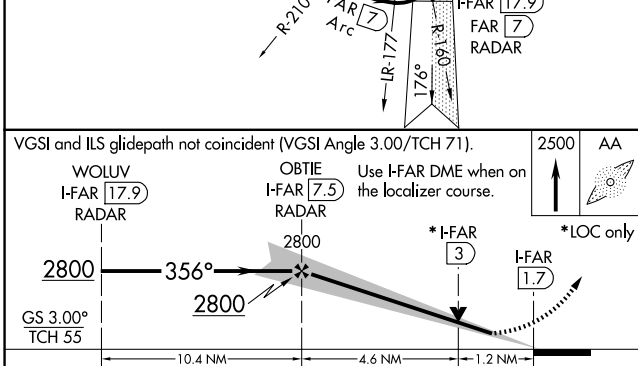
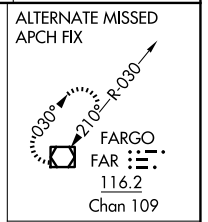
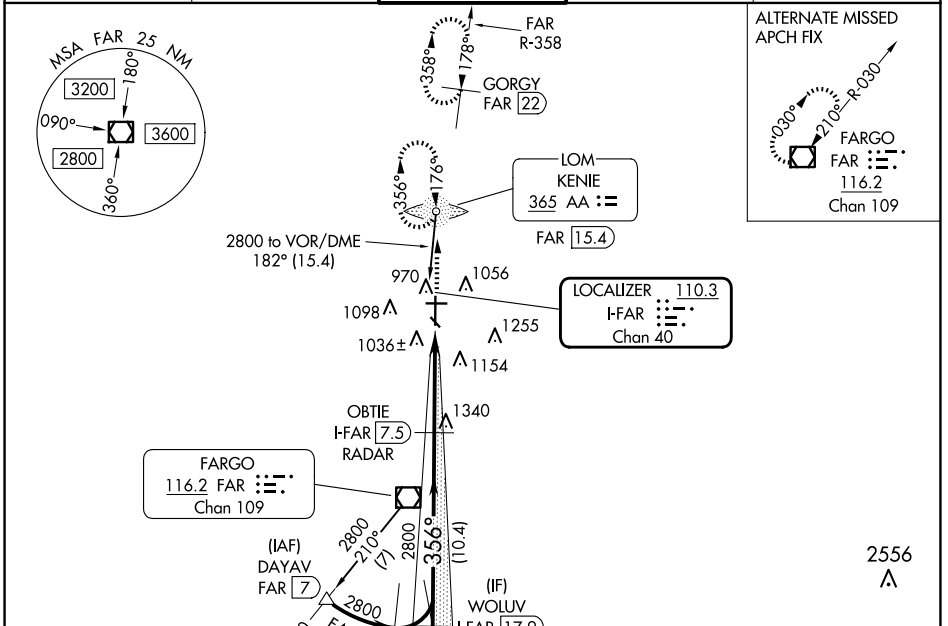
HECTOR INTL (F.A.R.)

ADF or DME required for procedure entry. ADF or DME required.

**MALSR**  


**MISSED APPROACH:** Climb to 2500 direct KENIE LOM and hold (DME aircraft climb to 4000 on FAR VOR/DME R-358 to GORGY/22 DME and hold N, RT, 178° inbound, continue climb-in-hold to 4000).

ATIS <b>124.5 379.2</b>	FARGO APP CON <b>120.4 377.15</b>	FARGO TOWER <b>133.8 290.4</b>	GND CON <b>121.9 348.6</b>	CINC DEL <b>121.9 348.6</b>
----------------------------	--------------------------------------	-----------------------------------	-------------------------------	--------------------------------



CATEGORY	A	B	C	D	E
S-ILS 36#	1099/24 200 (200-½)				
S-LOC 36	1360/24	461 (500-½)	1360/50 461 (500-1)		
CIRCLING	1380-1	479 (500-1)	1520-1¾ 619 (700-1¾)	1620-2¼ 719 (800-2¼)	1620-2½ 719 (800-2½)

NC-1, 15 MAY 2025 to 12 JUN 2025

NC-1, 15 MAY 2025 to 12 JUN 2025