

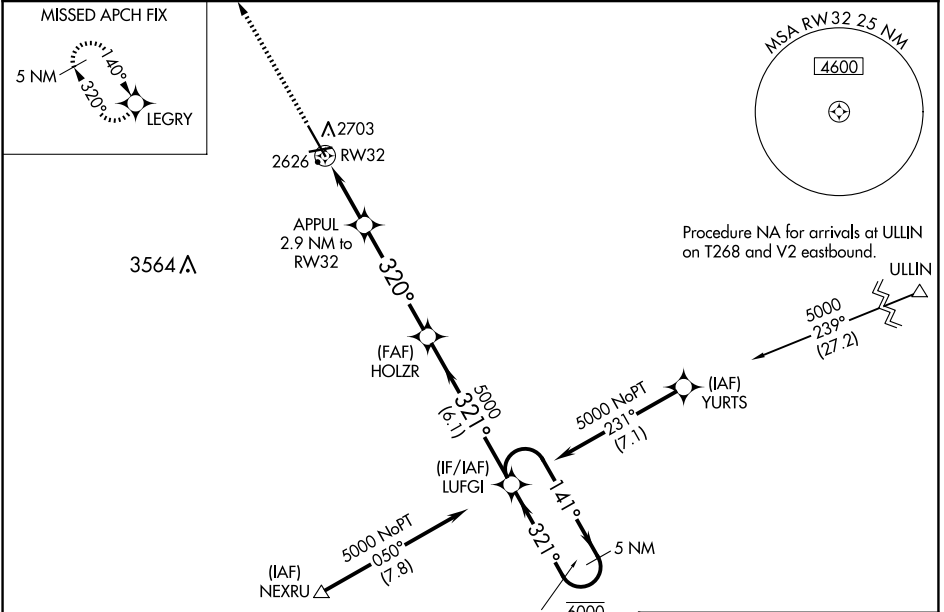
WAAS CH 50544 W32A	APP CRS 320°	Rwy Idg TDZE Apt Elev	7301 2587 2592
--	------------------------	-----------------------------	---

RNAV (GPS) RWY 32

DICKINSON/THEODORE ROOSEVELT RGNL (DIK)

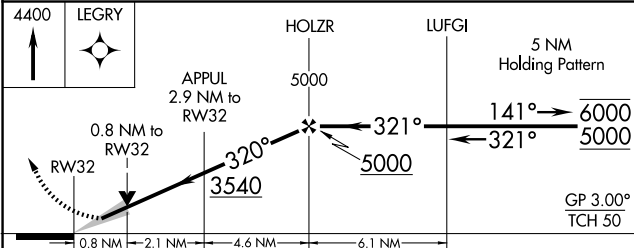
RNP APCH - GPS.	MALSR 	MISSED APPROACH: Climb to 4400 direct LEGRY and hold.
<p> For uncompensated Baro-VNAV systems, LNAV/VNAV NA below -24°C or above 54°C. For inop ALS, increase LNAV/VNAV all Cats visibility to 3/4 SM and LNAV Cat C/D visibility to 3/8 SM.</p>		

ASOS 118.375	MINNEAPOLIS CENTER 124.25 236.825	UNICOM 123.0 (CTAF)
------------------------	---	-------------------------------



Procedure NA for arrivals at NEXRU on V491 southbound.

Procedure NA for arrivals at ULLIN on T268 and V2 eastbound.



ELEV 2592	D	TDZE 2587
-----------	----------	-----------

- HIRL Rwy 14-32
- MIRL Rwy 7-25
- REIL Rws 7, 14 and 25

CATEGORY	A	B	C	D
LPV DA		2787-1/2	200 (200-1/2)	
LNAV/VNAV DA		2837-1/2	250 (300-1/2)	
LNAV MDA		2880-1/2	293 (300-1/2)	
CIRCLING	3060-1	468 (500-1)	3120-1/2 528 (600-1/2)	3200-2 608 (700-2)

