


WAAS CH <b>82502</b> <b>W23A</b>	APP CRS <b>231°</b>	Rwy ldg <b>6512</b> TDZE <b>1224</b> Apt Elev <b>1232</b>
--	------------------------	---

# RNAV (GPS) RWY 23

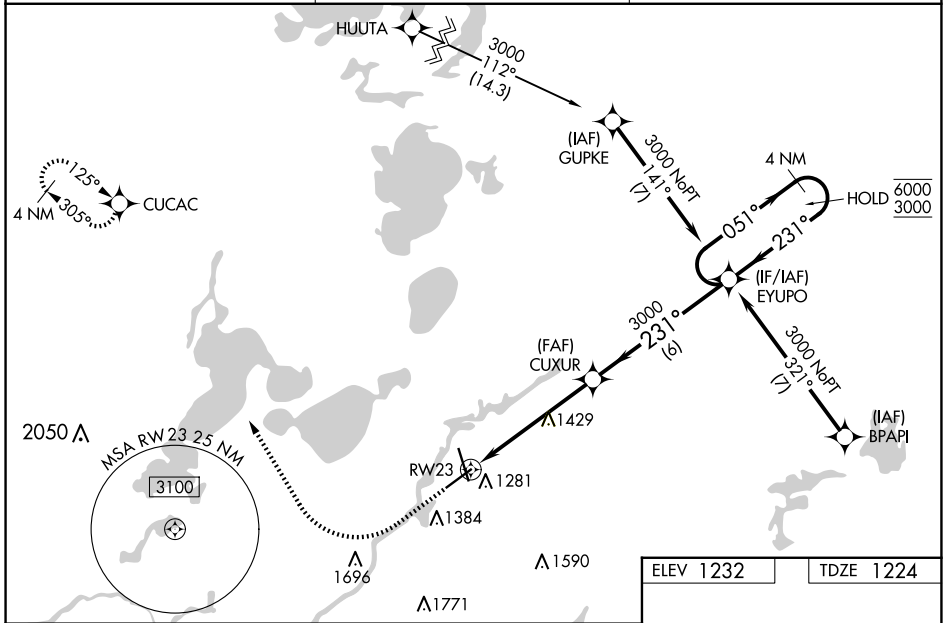
BRainerd LAKES RGNL (B.R.D)

**RNP APCH - GPS.**

**⚠** For uncompensated Baro-VNAV systems, LNAV/VNAV NA below -21°C or above 54°C. Baro-VNAV and VDP NA when using AIT altimeter setting. When local altimeter setting not received, use AIT altimeter setting and increase LPV DA to 1476 feet; increase LNAV/VNAV DA to 1553 feet; increase all MDAs 60 feet and LNAV visibility Cat C/D 1/2 SM, and Circling visibility Cat C/D 1/2 SM. For inop ALS when using AIT altimeter setting, increase LNAV/VNAV Cats C/D visibility to 1 1/2 SM. For inop ALS, increase LNAV/VNAV all Cats visibility 7/8 SM.

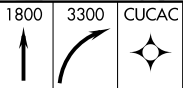
**MALSR**  **MISSED APPROACH:** Climb to 1800 then climbing right turn to 3300 direct CUCAV and hold.

ASOS <b>126.775</b>	MINNEAPOLIS CENTER <b>118.05 239.0</b>	UNICOM <b>122.7(CTAF) 0</b>
------------------------	---	--------------------------------



NC-1, 15 MAY 2025 to 12 JUN 2025

NC-1, 15 MAY 2025 to 12 JUN 2025

		<b>CUXUR</b> 3000 1.3 NM to RWY23 4.1 NM 6 NM		<b>EYUPO</b> 4 NM Holding Pattern 6000 3000 GP 3.00° TCH 50	
CATEGORY	A	B	C	D	
LPV DA		1424-1/2	200 (200-1/2)		
LNAV/VNAV DA		1501-1/2	277 (300-1/2)		
LNAV MDA	1680-1/2	456 (500-1/2)	1680-7/8	456 (500-7/8)	
<b>C</b> CIRCLING	1700-1	468 (500-1)	1780-1 1/2 548 (600-1 1/2)	1860-2 628 (700-2)	

