

WAAS CH 65917 W25A	APP CRS 253°	Rwy Idg TDZE 1389 Apt Elev 1391
----------------------------------------	------------------------	-----------------------------------------------------

RNAV (GPS) RWY 25

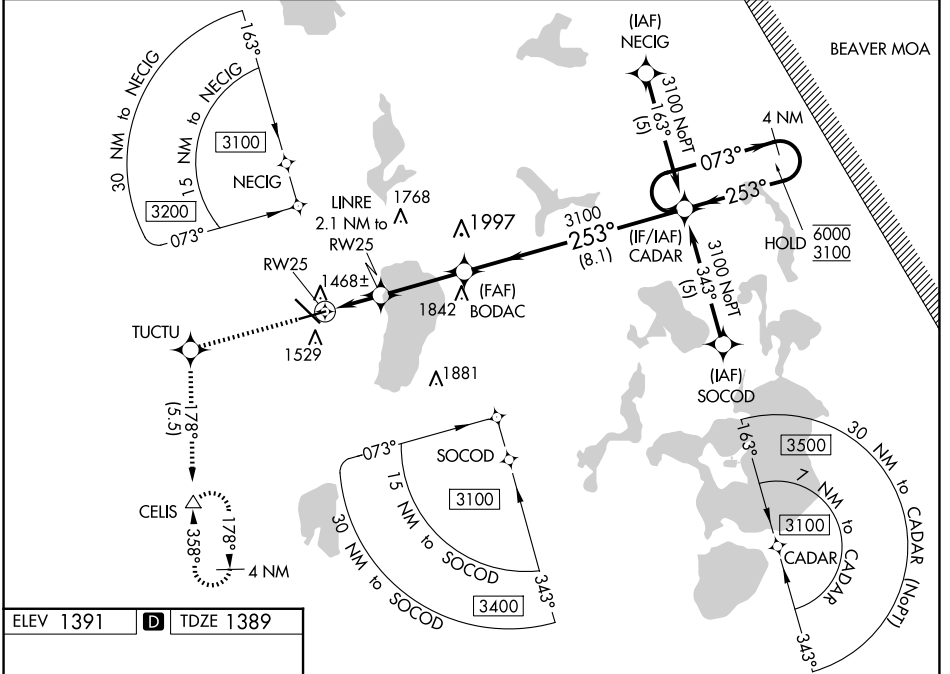
BEMIDJI RGNL (BJI)

RNP APCH.

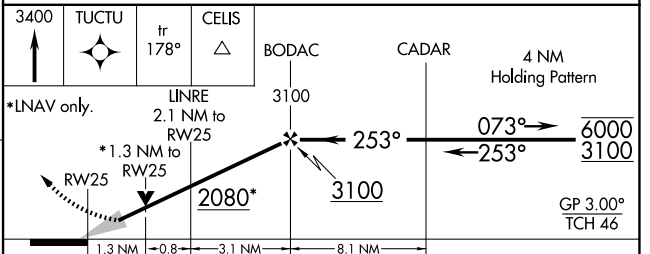
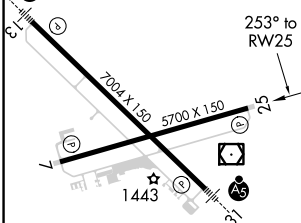
⚠ For uncompensated Baro-VNAV systems, LNAV/VNAV NA below -17°C or above 46°C.

MISSED APPROACH:
Climb to 3400 direct TUCTU and on track 178° to CELUS and hold.

AWOS-3 119.275	MINNEAPOLIS CENTER 134.75 251.1	UNICOM 122.8 (CTAF) 0
--------------------------	-------------------------------------------	---------------------------------



ELEV 1391	D	TDZE 1389
-----------	----------	-----------



CATEGORY	A	B	C	D
LPV DA		1589-¾	200 (200-¾)	
LNAV/VNAV DA		1752-¼	363 (400-¼)	
LNAV MDA	1840-1	451 (500-1)	1840-1⅓ 451 (500-1⅓)	1840-1½ 451 (500-1½)
C CIRCLING	1840-1 449 (500-1)	1860-1 469 (500-1)	1860-1½ 469 (500-1½)	1960-2 569 (600-2)

HIRL Rwy 13-31 **0**
MIRL Rwy 7-25 **0**
REIL Rwy 7 and 25 **0**

NC-1, 15 MAY 2025 to 12 JUN 2025

NC-1, 15 MAY 2025 to 12 JUN 2025