

WAAS CH 69537 W34A	APP CRS 340°	Rwy Ldg 3500 TDZE 1482 Apt Elev 1482
--	------------------------	---

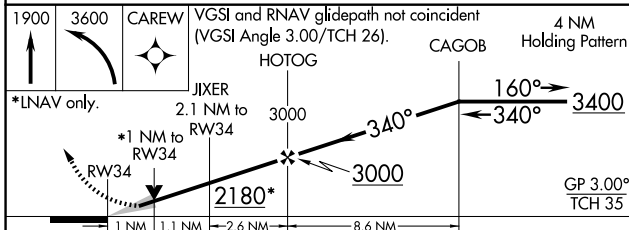
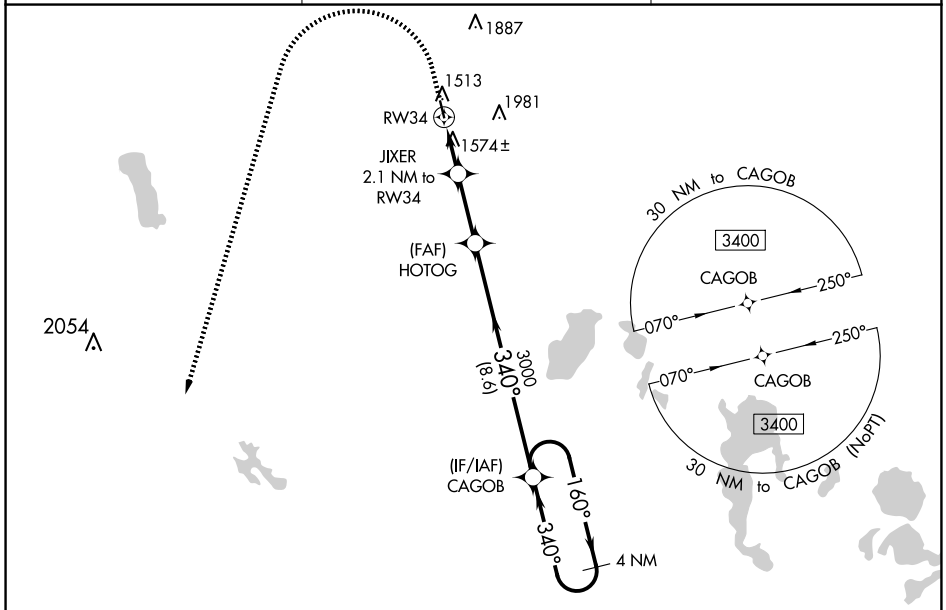
RNAV (GPS) RWY 34

CANDO MUNI (9D7)

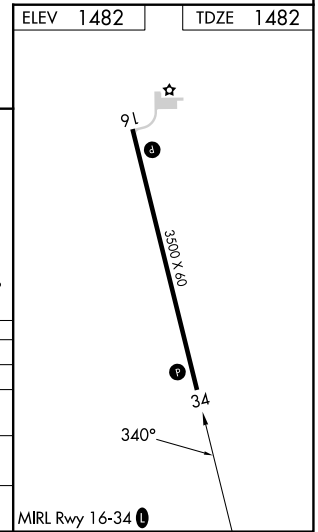
▽ DME/DME RNP-0.3 NA. When local altimeter not received, use Devils Lake altimeter setting and increase all DA 63 feet and all MDA 80 feet. Increase LPV visibility $\frac{1}{8}$ mile all Cats and LNAV/VNAV visibility $\frac{1}{4}$ mile all Cats. Baro-VNAV and VDP NA when using Devils Lake altimeter setting. For uncompensated Baro-VNAV systems, LNAV/VNAV NA below -17°C (0°F) or above 54°C (130°F).

MISSED APPROACH:
Climb to 1900 then climbing left turn to 3600 direct CAREW and hold.

AWOS-3 118.325	MINNEAPOLIS CENTER 124.2 270.3	CTAF 122.9 0
--------------------------	--	-------------------------------



CATEGORY	A	B	C	D
LPV DA	1732-1	250 (300-1)		NA
LNAV/VNAV DA	1871-1 $\frac{3}{8}$	389 (400-1 $\frac{3}{8}$)		NA
LNAV MDA	1840-1	358 (400-1)		NA
C CIRCLING	1900-1 418 (500-1)	1940-1 458 (500-1)		NA



NC-1, 15 MAY 2025 to 12 JUN 2025

NC-1, 15 MAY 2025 to 12 JUN 2025