

VOR/DME FAR 116.2 Chan 109	APP CRS 283°	Rwy Idg 3901 TDZE 933 Apt Elev 933
--	------------------------	---

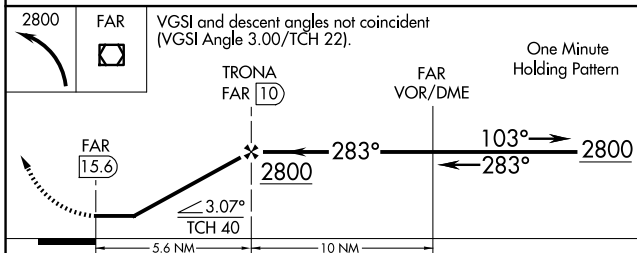
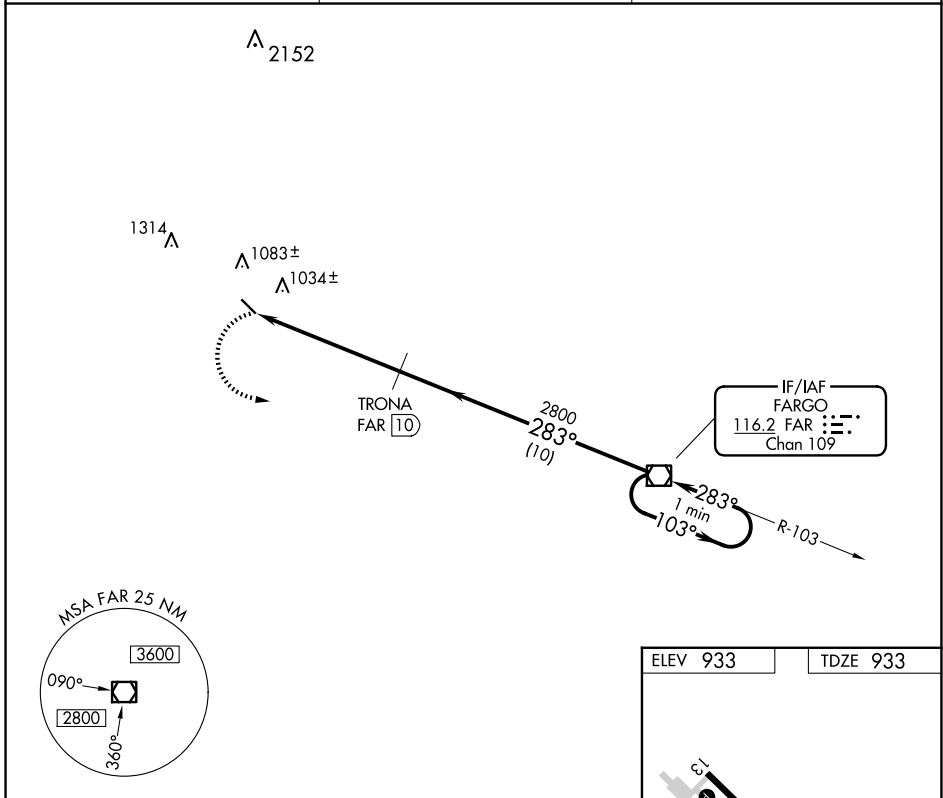
VOR/DME RWY 31

CASSELTON ROBERT MILLER RGNL (5N8)

NA Use Fargo altimeter setting; when not received, use Moorhead altimeter setting and increase all MDA 20 feet.

MISSED APPROACH: Climbing left turn to 2800 direct FAR VOR/DME and hold.

FAR ASOS 124.5 379.2	FARGO APP CON 120.4 377.15	UNICOM 122.8 (CTAF) 0
--------------------------------	--------------------------------------	---------------------------------



ELEV 933	TDZE 933
----------	----------

Diagram illustrating the runway layout and lighting:

- REIL Rwy 31
- MIRL Rwy 13-31
- 3901 x 75
- 283° 5.6 NM from FAF

CATEGORY	A	B	C	D
S-31	1360-1	427 (500-1)	1360-1½ 427 (500-1½)	NA
CIRCLING	1480-1 547 (600-1)	1520-1 587 (600-1)	1620-2 687 (700-2)	NA

NC-1, 15 MAY 2025 to 12 JUN 2025

NC-1, 15 MAY 2025 to 12 JUN 2025