

APP CRS  
**305°**

Rwy Idg **3505**  
TDZE **1335**  
Apt Elev **1335**

# RNAV (GPS) RWY 30

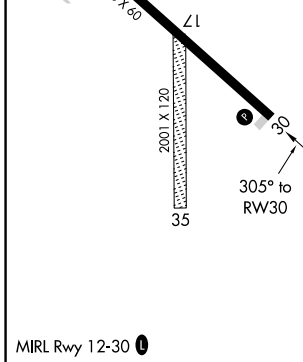
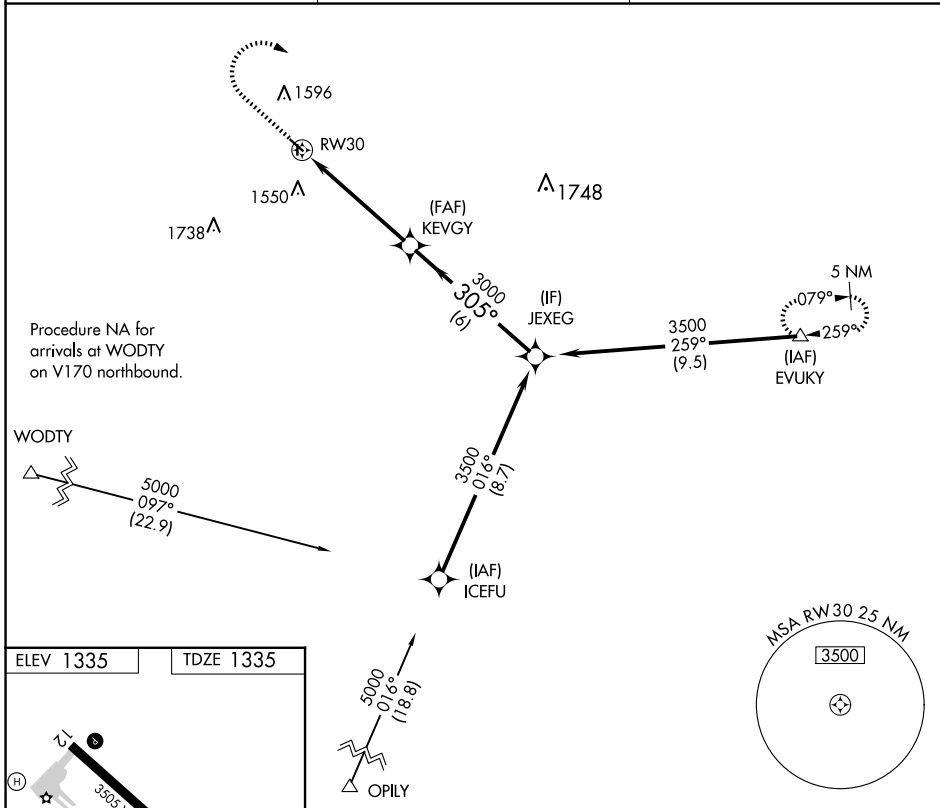
OAKES MUNI (2D5)

RNP APCH

▼ When local altimeter setting not received, use Aberdeen altimeter setting; increase all MDA 120 feet and LNAV and Circling Cat C visibility ¼ mile. Circling Rwy 17, 35 NA. Rwy 30 helicopter visibility reduction below 1 SM NA.

▲ NA MISSED APPROACH: Climb to 2000 then climbing right turn to 5000 direct EVUKY and hold.

AWOS-3 **118,675**      MINNEAPOLIS CENTER **124.2 270.3**      CTAf **122.9**



2000	5000	EVUKY	△	
RW30		KEVGY	JEXEG	
5.1 NM		6 NM	3500	
3000		305°	Procedure Turn NA	
≤ 3.00° TCH 30				
CATEGORY	A	B	C	D
LNAV MDA	1920-1	585 (600-1)	1920-1¾ 585 (600-1¾)	NA
CIRCLING	1920-1	585 (600-1)	2020-2 685 (700-2)	NA

NC-1, 15 MAY 2025 to 12 JUN 2025

NC-1, 15 MAY 2025 to 12 JUN 2025