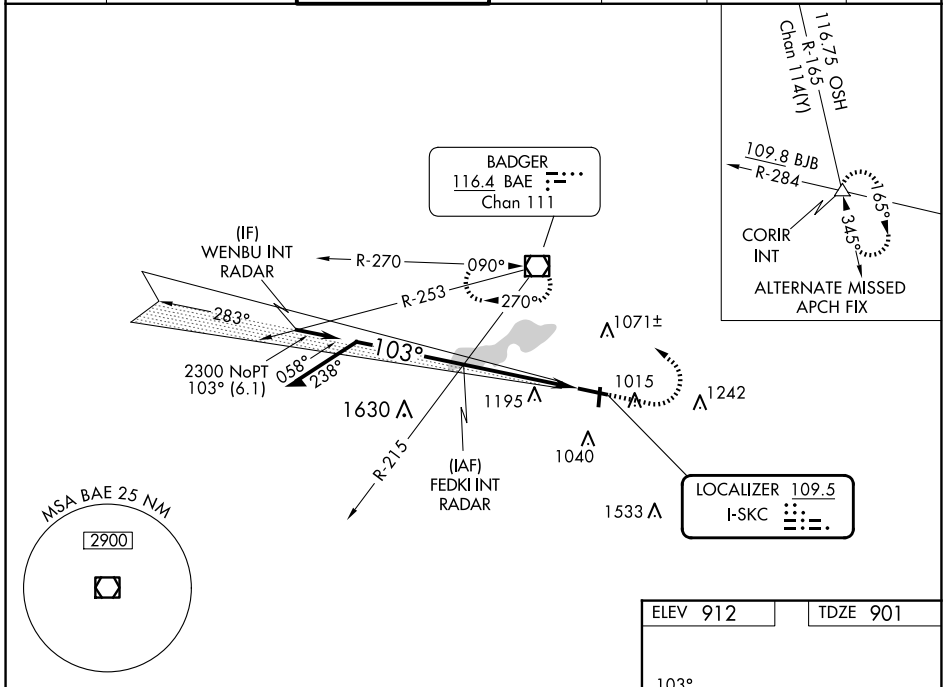


LOC I-SKC 109.5	APP CRS 103°	Rwy Ldg 5849
		TDZE 901
		Apt Elev 912

ILS or LOC RWY 10

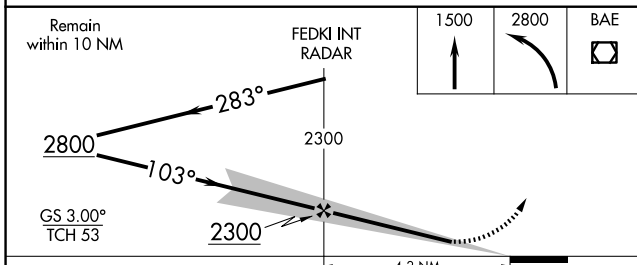
WAUKESHA COUNTY (U/S)

RADAR required for procedure entry.		MALSRL 	MISSED APPROACH: Climb to 1500 then climbing left turn to 2800 direct BAE VOR/DME and hold, continue climb-in-hold to 2800.					
For inop ALS, increase S-LOC 10 visibility to 1½ SM. When local altimeter setting not received, use MWC altimeter setting and increase S-ILS 10 DA to 1149 feet; increase all MDAs 60 feet and S-LOC 10 visibility Cats C and D ½ SM, and Circling visibility Cats C and D ¼ SM.			ATIS 118.875	MILWAUKEE APP CON 125.35 307.0	WAUKESHA TOWER ★ 123.7 (CTAF)	GND CON 121.6	CLNC DEL 121.6	CLNC DEL 128.7 (When twr closed)



EC-3, 15 MAY 2025 to 12 JUN 2025

EC-3, 15 MAY 2025 to 12 JUN 2025



ELEV 912	TDZE 901
HIRL Rwy 10-28 MIRL Rwy 18-36 REIL Rwy 28 REIL Rws 18 and 36	
FAF to MAP 4.2 NM	
Knots	60 90 120 150 180
Min:Sec	4:12 2:48 2:06 1:41 1:24

CATEGORY	A	B	C	D
S-ILS 10		1101-½	200 (200-½)	
S-LOC 10	1400-½	499 (500-½)	1400-1	499 (500-1)
CIRCLING	1460-1 548 (600-1)	1500-1 588 (600-1)	1540-1¾ 628 (700-1¾)	1640-2¼ 728 (800-2¼)