

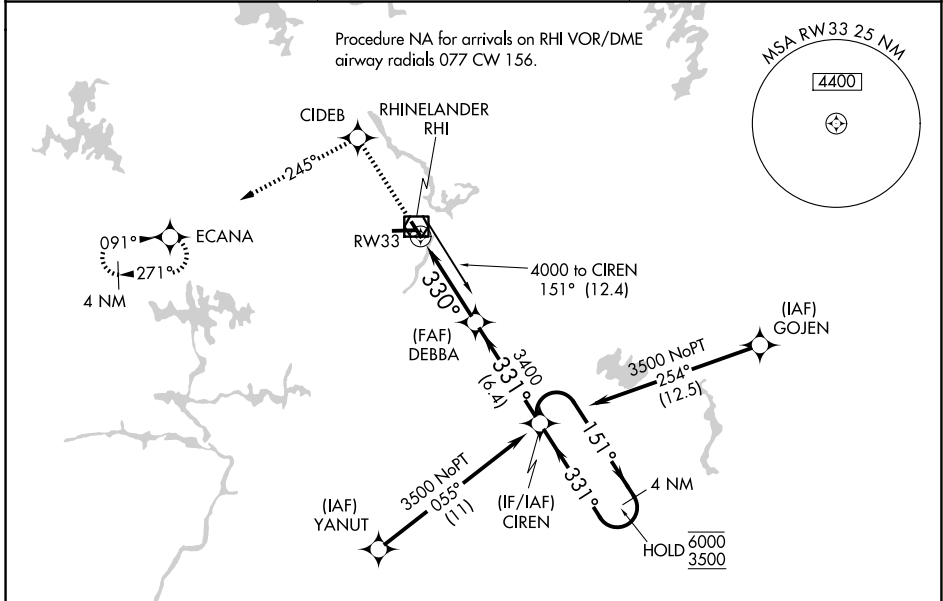
WAAS CH <b>69407</b> <b>W33A</b>	APP CRS <b>330°</b>	Rwy Ldg TDZE Apt Elev	<b>5201</b> <b>1611</b> <b>1623</b>
--	------------------------	-----------------------------	---

# RNAV (GPS) RWY 33

RHINELANDER/ONEIDA COUNTY (RHI)

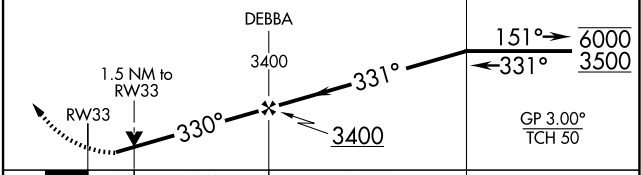
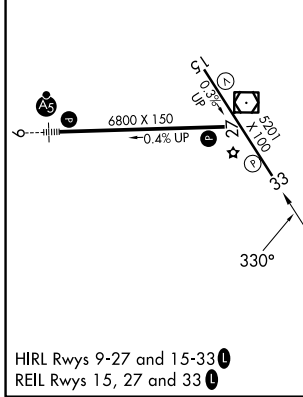
RNP APCH - GPS.	MISSED APPROACH: Climb to 4000 direct CIDEB and on track 245° to ECANA and hold.
<p><b>▼</b> For uncompensated Baro-VNAV systems, LNAV/VNAV NA below -18°C or above 54°C.</p> <p><b>▲</b> Rwy 33 helicopter visibility reduction below ¾ SM NA.</p>	

ASOS <b>126.825</b>	MINNEAPOLIS CENTER <b>133.65 281.5</b>	UNICOM <b>123.0 (CTAF) 0</b>
------------------------	---	---------------------------------



ELEV 1623	<b>D</b>	TDZE 1611
-----------	----------	-----------

4000	CIDEB	tr 245°	ECANA	VGSI and RNAV glidepath not coincident (VGSI Angle 3.00/TCH 27).
------	-------	---------	-------	--



CATEGORY	A	B	C	D
LPV DA		1861-1	250 (300-1)	
LNAV/VNAV DA		1920-1	309 (300-1)	
LNAV MDA	2100-1	489 (500-1)	2100-1 <sup>3</sup> / <sub>8</sub>	489 (500-1 <sup>3</sup> / <sub>8</sub> )
CIRCLING	2100-1 477 (500-1)	2260-1 637 (700-1)	2260-1 <sup>3</sup> / <sub>4</sub> 637 (700-1 <sup>3</sup> / <sub>4</sub> )	2280-2 657 (700-2)

EC-3, 11 JUN 2026 to 09 JUL 2026

EC-3, 11 JUN 2026 to 09 JUL 2026