

WAAS	APP CRS	Rwy Idg	<b>9604</b>
CH <b>60922</b>	<b>128°</b>	TDZE	<b>632</b>
<b>W13A</b>		Apt Elev	<b>661</b>

# RNAV (GPS) RWY 13

GENERAL DOWNING - PEORIA INTL (PIA)

**RNP APCH - GPS.**

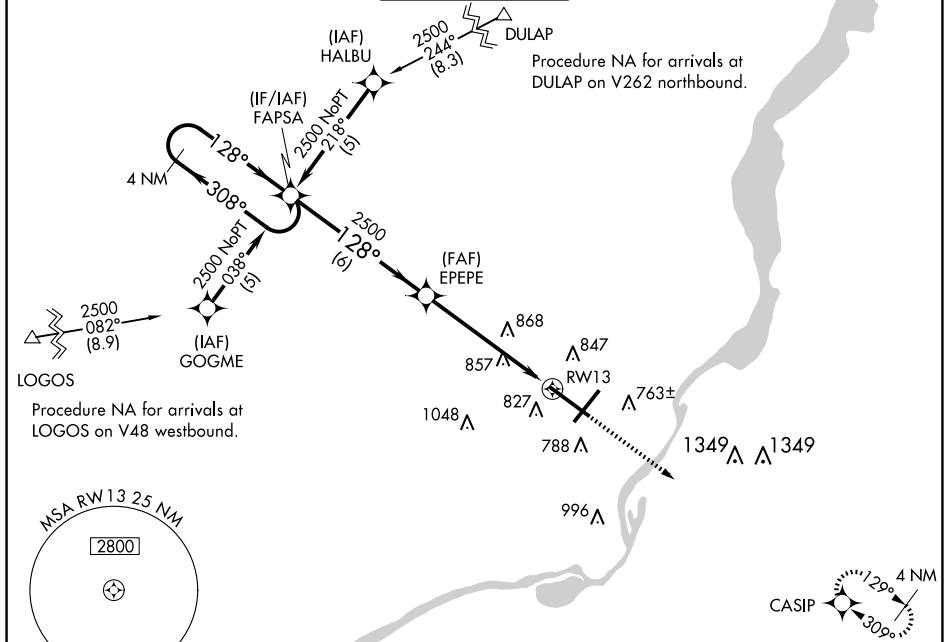
For uncompensated Baro-VNAV systems, LNAV/VNAV NA below -19°C or above 54°C. When local altimeter setting not received, use Lincoln altimeter setting increase LPV DA to 1110 feet and all visibilities ¼ SM. Increase LNAV/VNAV DA to 1168 feet and all visibilities ⅓ SM.

Increase all MDAs 100 feet and LNAV visibility Cat C/D ¼ SM, and Circling visibility Cat C/D ½ SM. Baro-VNAV and VDP NA when using Lincoln altimeter setting. For inop ALS, increase LPV all Cats visibility to 1 ⅓ SM, LNAV Cat A/B visibility to 1 SM and Cat C/D visibility to 1 ⅓ SM.

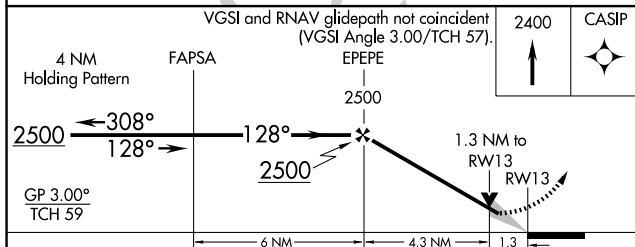
For inop ALS when using Lincoln altimeter setting, increase LPV visibility all Cats to 1 ⅓ SM and LNAV Cat A/B visibility to 1 SM.

**MALSR**  
MISSED APPROACH: Climb to 2400 direct CASIP and hold.

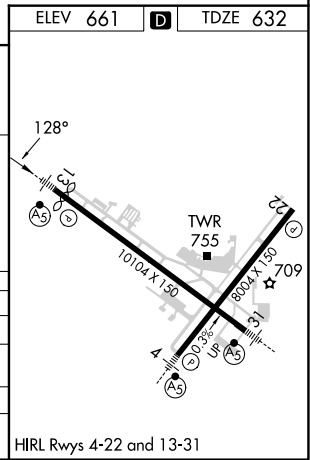
ATIS <b>126.1 282.2</b>	SAINT LOUIS APP CON <b>125.8 269.2</b>	PEORIA TOWER <b>124.0 353.85</b>	GND CON <b>121.85 348.6</b>	CLNC DEL <b>124.675 317.55</b>
----------------------------	---	-------------------------------------	--------------------------------	-----------------------------------



ELEV 661	<b>D</b>	TDZE 632
----------	----------	----------



CATEGORY	A	B	C	D
LPV DA		1025-¾	389 (400-¾)	
LNAV/VNAV DA		1083-1	447 (500-1)	
LNAV MDA	1120-½	484 (500-½)	1120-1	484 (500-1)
<b>C</b> CIRCLING	1160-1	499 (500-1)	1180-1½ 519 (600-1½)	1400-2¼ 739 (800-2¼)



EC-3, 15 MAY 2025 to 12 JUN 2025

EC-3, 15 MAY 2025 to 12 JUN 2025