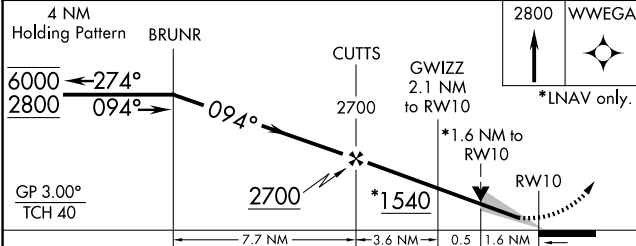
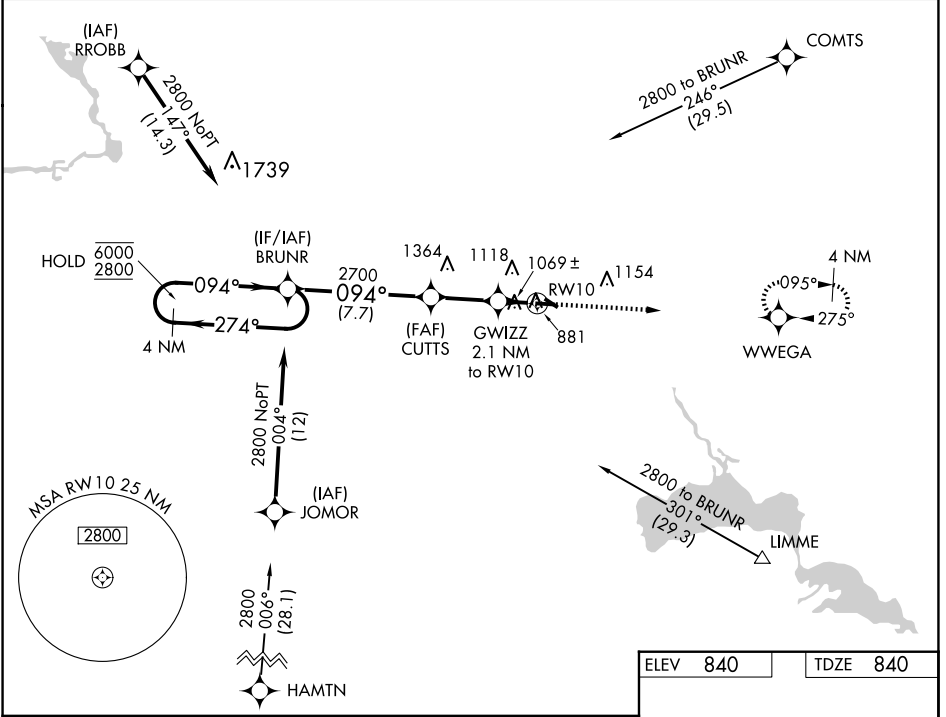


WAAS CH 63120 W10A	APP CRS 094°	Rwy Idg TDZE Apt Elev	5200 840 840
--	------------------------	-----------------------------	---

RNAV (GPS) RWY 10

WAUPACA MUNI (PCZ)

RNP APCH. ▼ For uncompensated Baro-VNAV systems, LNAV/VNAV ▲ NA below -16°C or above 54°C.		MISSED APPROACH: Climb to 2800 direct WWEGA and hold.
AWOS-3 118.625	MINNEAPOLIS CENTER 124.4 317.7	UNICOM 122.8 (CTAF) 0



ELEV 840	TDZE 840																									
2800 WWEGA																										
<table border="1"> <thead> <tr> <th>CATEGORY</th> <th>A</th> <th>B</th> <th>C</th> <th>D</th> </tr> </thead> <tbody> <tr> <td>LPV DA</td> <td colspan="2">1090-3/4</td> <td colspan="2">250 (300-3/4)</td> </tr> <tr> <td>LNAV/VNAV DA</td> <td colspan="2">1384-15/8</td> <td colspan="2">544 (600-15/8)</td> </tr> <tr> <td>LNAV MDA</td> <td>1380-1</td> <td>540 (600-1)</td> <td>1380-1 1/2</td> <td>540 (600-1 1/2)</td> </tr> <tr> <td>CIRCLING</td> <td>1380-1 540 (600-1)</td> <td>1420-1 580 (600-1)</td> <td>1420-1 1/2 580 (600-1 1/2)</td> <td>1500-2 660 (700-2)</td> </tr> </tbody> </table>		CATEGORY	A	B	C	D	LPV DA	1090-3/4		250 (300-3/4)		LNAV/VNAV DA	1384-15/8		544 (600-15/8)		LNAV MDA	1380-1	540 (600-1)	1380-1 1/2	540 (600-1 1/2)	CIRCLING	1380-1 540 (600-1)	1420-1 580 (600-1)	1420-1 1/2 580 (600-1 1/2)	1500-2 660 (700-2)
CATEGORY	A	B	C	D																						
LPV DA	1090-3/4		250 (300-3/4)																							
LNAV/VNAV DA	1384-15/8		544 (600-15/8)																							
LNAV MDA	1380-1	540 (600-1)	1380-1 1/2	540 (600-1 1/2)																						
CIRCLING	1380-1 540 (600-1)	1420-1 580 (600-1)	1420-1 1/2 580 (600-1 1/2)	1500-2 660 (700-2)																						
REIL Rwy 10 and 28 0 MIRL Rwy 10-28 and 13-31 0																										

EC-3, 15 MAY 2025 to 12 JUN 2025

EC-3, 15 MAY 2025 to 12 JUN 2025