

WAAS CH 42804 W28A	APP CRS 273°	Rwy Idg 13000 TDZE 651 Apt Elev 680
--	------------------------	--

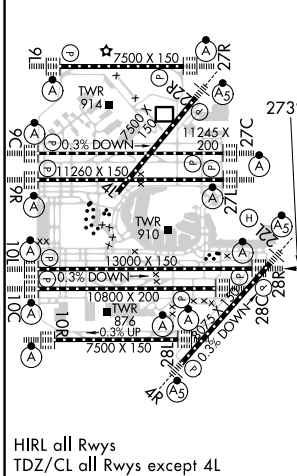
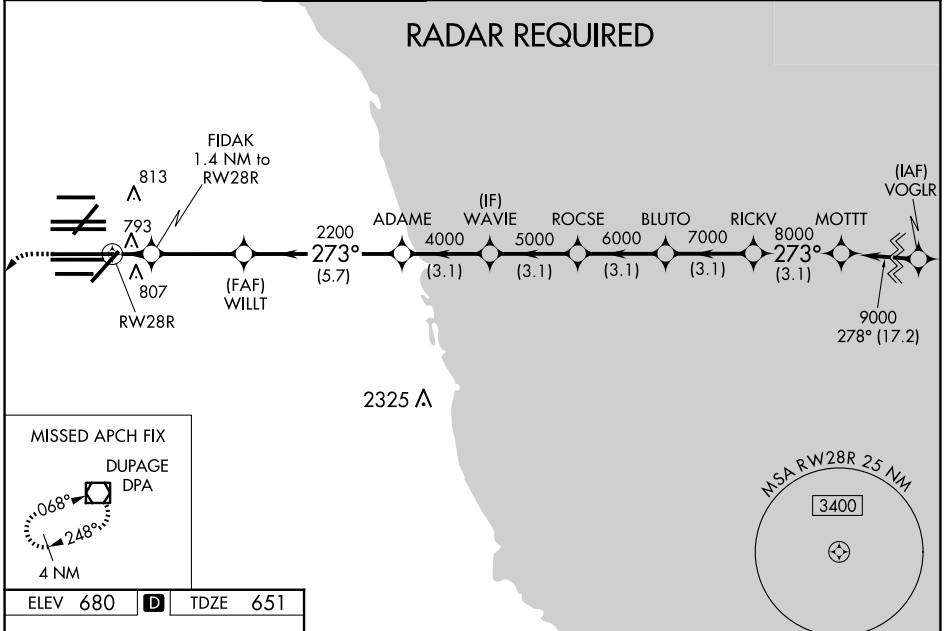
RNAV (GPS) RWY 28R

CHICAGO O'HARE INTL (ORD)

▼ For uncompensated Baro-VNAV systems, LNAV/VNAV NA below -19°C (-2°F) or above 54°C (130°F). Simultaneous approach authorized. DME/DME RNP-0.3 NA. For inop ALSF-2, increase LNAV/VNAV all Cats visibility to 1½ mile and LNAV Cats C/D visibility to RVR 6000. LNAV procedure NA during simultaneous operations. Use of FD or AP providing RNAV track guidance required during simultaneous operations.

ALSF-2
 MISSED APPROACH: Climb to 1200 then climbing left turn to 4000 direct DPA VOR/DME and hold.

D-ATIS 135.4 282.225	CHICAGO APP CON 119.0 292.125	O'HARE TOWER 132.7 348.0	GND CON (TWR CENTER) 124.125 (TWR NORTH) 118.05 (TWR SOUTH) 226.675 (ALL TWRs)	121.75 (OBND) 121.9 (IBND)	CLNC DEL 121.6	CPDLC
--	---	------------------------------------	--	---	--------------------------	-------



ELEV 680	D	TDZE 651																			
1200	4000	DPA	VGSI and RNAV glidepath not coincident (VGSI Angle 3.00/TCH 70).																		
*LNAV only.																					
<table border="1"> <tr> <td></td> <td>FIDAK 1.4 NM to RWY 28R</td> <td>WILLT 2200</td> <td>ADAME 4000</td> <td>WAVIE 5000</td> <td>ROCSE 6000</td> <td>BLUTO 7000</td> <td>RICKV 8000</td> <td>MOTT 9000</td> </tr> <tr> <td></td> <td>1.4</td> <td>3.3 NM</td> <td>5.7 NM</td> <td>3.1 NM</td> <td>3.1 NM</td> <td>3.1 NM</td> <td>3.1 NM</td> <td>3.1 NM</td> </tr> </table>					FIDAK 1.4 NM to RWY 28R	WILLT 2200	ADAME 4000	WAVIE 5000	ROCSE 6000	BLUTO 7000	RICKV 8000	MOTT 9000		1.4	3.3 NM	5.7 NM	3.1 NM	3.1 NM	3.1 NM	3.1 NM	3.1 NM
	FIDAK 1.4 NM to RWY 28R	WILLT 2200	ADAME 4000	WAVIE 5000	ROCSE 6000	BLUTO 7000	RICKV 8000	MOTT 9000													
	1.4	3.3 NM	5.7 NM	3.1 NM	3.1 NM	3.1 NM	3.1 NM	3.1 NM													
GP 3.00°	TCH 54																				
CATEGORY	A	B	C	D																	
LPV	DA	851/18	200 (200-½)																		
LNAV/VNAV	DA	1041/45	390 (400-¾)																		
LNAV MDA		1060/24	409 (400-½)	1060/40 409 (400-¾)																	

EC-3, 15 MAY 2025 to 12 JUN 2025

EC-3, 15 MAY 2025 to 12 JUN 2025