

WAAS CH <b>50228</b> <b>W22B</b>	APP CRS <b>225°</b>	Rwy Idg TDZE Apt Elev	<b>8075</b> <b>654</b> <b>680</b>
--	------------------------	-----------------------------	---

# RNAV (GPS) RWY 22L

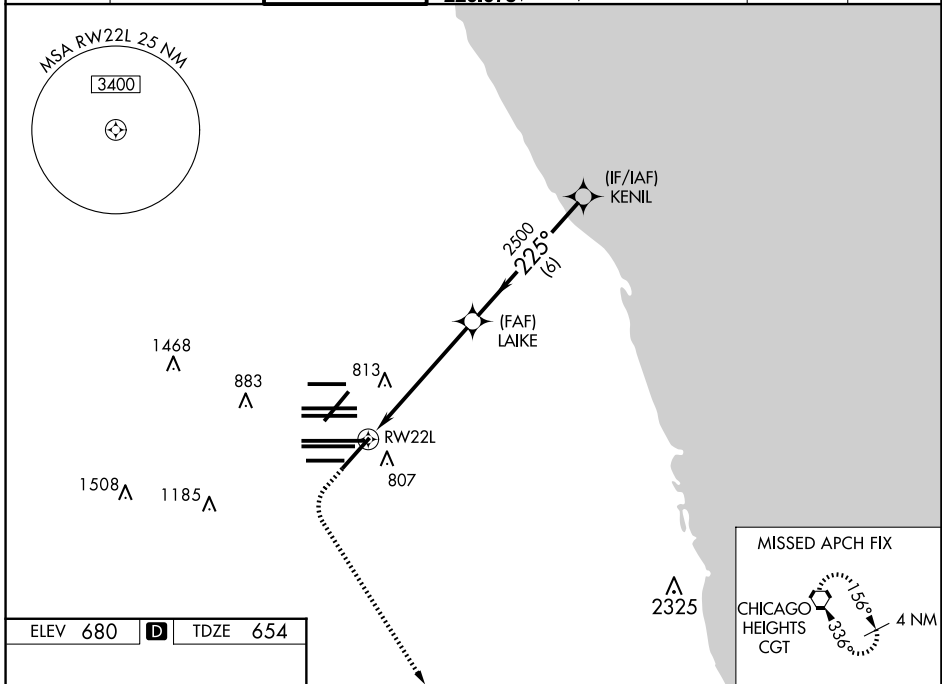
CHICAGO O'HARE INTL (ORD)

**⚠** For uncompensated Baro-VNAV systems, LNAV/VNAV NA below -19°C (-2°F) or above 54°C (130°F). Simultaneous approach authorized with Rwy 22R. DME/DME RNP-0.3 NA. LNAV procedure NA during simultaneous operations. Use of FD or AP providing RNAV track guidance required during simultaneous operations.

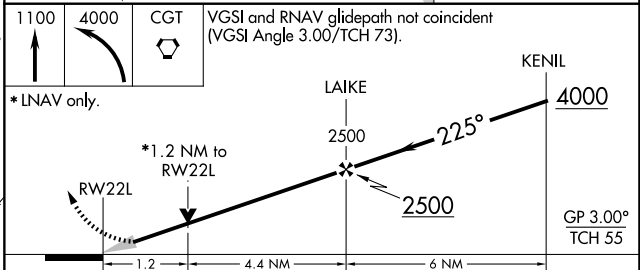
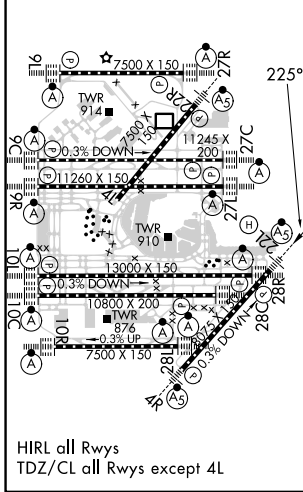


**MISSED APPROACH:** Climb to 1100 then climbing left turn to 4000 direct CGT VORTAC and hold.

D-ATIS <b>135.4</b> <b>282.225</b>	CHICAGO APP CON <b>119.0 292.125</b>	O'HARE TOWER <b>120.75 348.0</b>	GND CON (TWR NORTH) <b>124.125</b> (TWR SOUTH) <b>118.05</b> (ALL TWRs) <b>226.675</b>	(TWR CENTER) <b>121.75</b> (OBND) <b>121.9</b> (IBND)	CLNC DEL <b>121.6</b>	CPDLC
--	---	-------------------------------------	---	---	--------------------------	-------



ELEV 680	<b>D</b>	TDZE 654
----------	----------	----------



CGT	1100	4000	CGT	VGSi and RNAV glidepath not coincident (VGSi Angle 3.00/TCH 73).		
*LNAV only.	<p>RW22L → LAIKE (2500) → KENIL (4000)</p> <p>Distances: 1.2 NM, 4.4 NM, 6 NM</p> <p>GP 3.00° TCH 55</p>					
CATEGORY	A	B	C	D		
LPV DA	854/18		200 (200-½)			
LNAV/VNAV DA	1066/45		412 (400-¾)			
LNAV MDA	1120/24	466 (500-½)		1120/50	466 (500-1)	
<b>C</b> CIRCLING	1220-1	540 (600-1)		1220-1½	1460-2½ 540 (600-1½) 780 (800-2½)	

EC-3, 15 MAY 2025 to 12 JUN 2025

EC-3, 15 MAY 2025 to 12 JUN 2025