

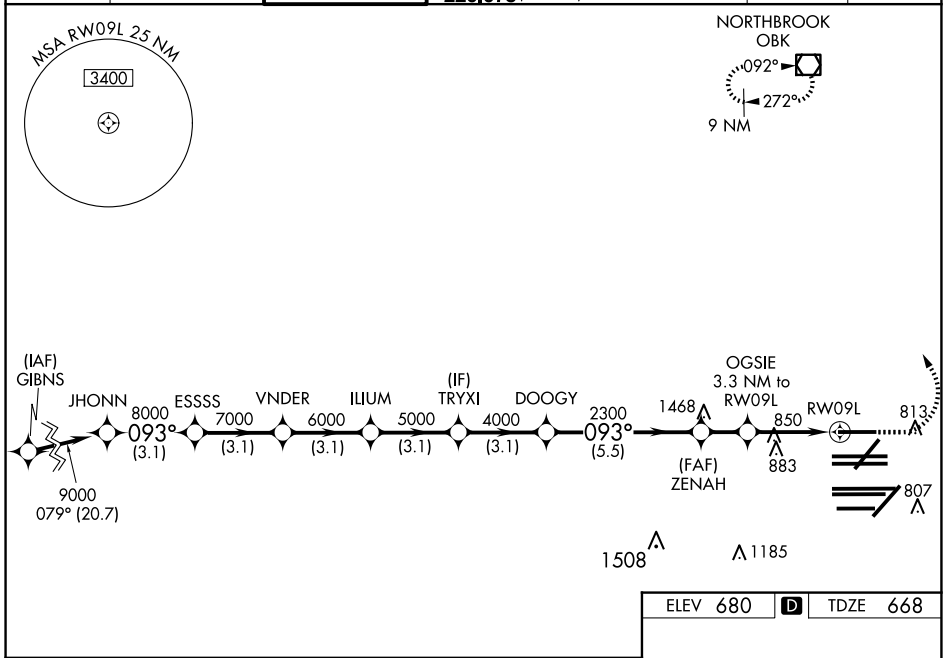
WAAS CH <b>99508</b> <b>W09B</b>	APP CRS <b>093°</b>	Rwy Idg <b>7500</b> TDZE <b>668</b> Apt Elev <b>680</b>
--	------------------------	---

# RNAV (GPS) RWY 9L

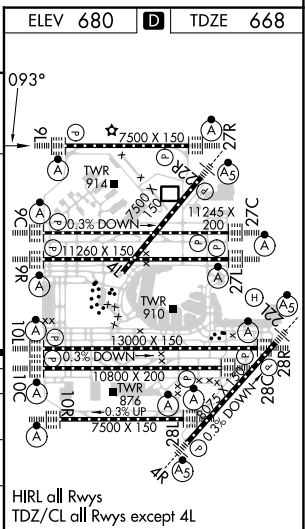
CHICAGO O'HARE INTL (ORD)

RADAR required for procedure entry. RNP APCH.		ALSIF-2 	MISSED APPROACH: Climb to 1100 then climbing left turn to 4000 direct OBK VOR/DME and hold, continue climb-in-hold to 4000.
<p>Simultaneous approach authorized. LNAV procedure NA during simultaneous operations. Use of FD or AP providing RNAV track guidance required during simultaneous operations. For uncompensated Baro-VNAV systems, procedure NA below -19°C or above 54°C.</p>			

D-ATIS <b>135.4</b> <b>282.225</b>	CHICAGO APP CON <b>119.0 292.125</b>	O'HARE TOWER <b>128.15 348.0</b>	GND CON (TWR NORTH) <b>124.125</b> (TWR SOUTH) <b>118.05</b> (ALL TWRS) <b>226.675</b>	(TWR CENTER) <b>121.75</b> (OBND) <b>121.9</b> (IBND)	CLNC DEL <b>121.6</b>	CPDLC
--	---	-------------------------------------	--	--	--------------------------	-------



JHONN 9000	ESSSS 7000	VNDER 6000	ILIUM 5000	TRYXI 4000	DOOGY 2300	ZENAH 1760	OGSIE 3.3 NM to RW09L	RW09L
GP 3.00° TCH 55	093°	093°	093°	093°	093°	093°	093°	093°
3.1 NM	3.1 NM	3.1 NM	3.1 NM	3.1 NM	5.5 NM	1.7 NM	2.1 NM	1.2 NM
CATEGORY	A		B		C	D		
LPV DA	868/18		200 (200-½)					
LNAV/VNAV DA	1034/35		366 (400-¾)					
LNAV MDA	1100/24		432 (500-½)		1100/40		432 (500-¾)	



EC-3, 15 MAY 2025 to 12 JUN 2025

EC-3, 15 MAY 2025 to 12 JUN 2025