

LOC/DME I-VZE 108.95 Chan 26 (Y)	APP CRS 273°	Rwy ldg 10800
		TDZE 651
		Apt Elev 680

ILS or LOC RWY 28C

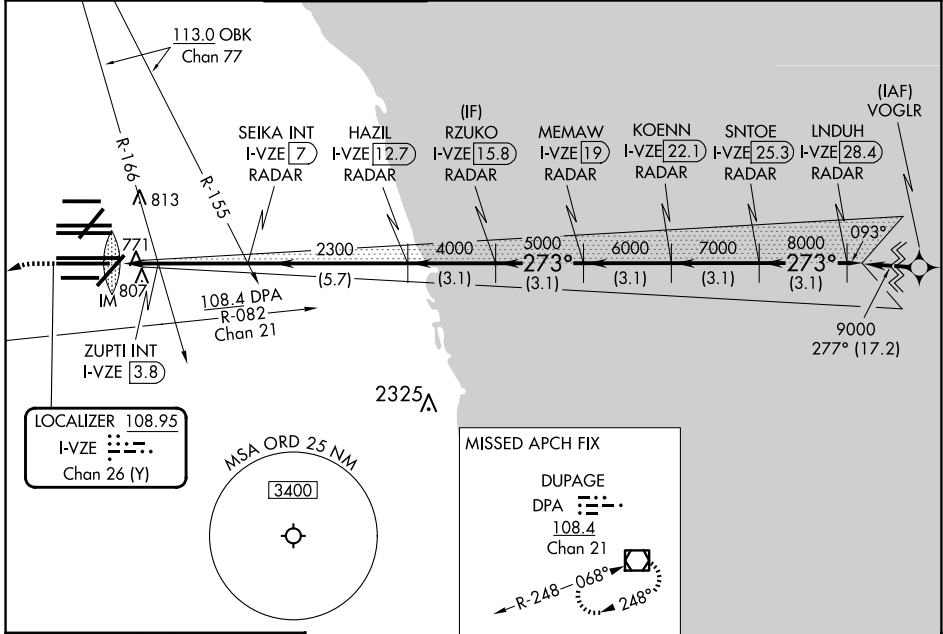
CHICAGO O'HARE INTL (ORD)

From VOGLR: RNAV 1-GPS required.
Aircraft not GPS equipped - RADAR required for procedure entry.
DME or RADAR required.

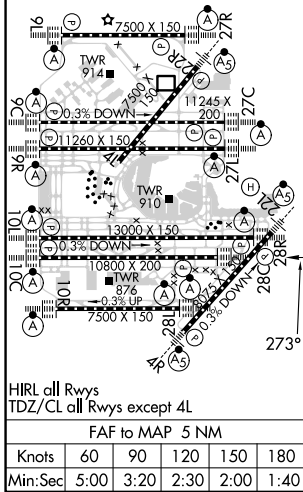
ALSf-2

MISSED APPROACH: Climb to 1100 then climbing left turn to 4000 on heading 215° and DPA VOR/DME R-082 to DPA VOR/DME and hold.

D-ATIS 135.4 282.225	CHICAGO APP CON 119.0 292.125	O'HARE TOWER 120.75 348.0	GND CON (TWR CENTER) 124.125 (TWR NORTH) 118.05 (TWR SOUTH) 126.675 (ALL TWRS)	(TWR CENTER) 121.75 (OBND) 121.9 (IBND)	CLNC DEL 121.6	CPDLC
--	---	-------------------------------------	--	---	--------------------------	-------



ELEV 680	D	TDZE 651
----------	---	----------



1100	4000	DPA R-082	DPA	RZUKO I-VZE 15.8 RADAR	KOENN I-VZE 22.1 RADAR	LNDUH I-VZE 28.4 RADAR
*LOC only.				SEIKA INT I-VZE 7 RADAR	MEMAW I-VZE 19 RADAR	SNTOE I-VZE 25.3 RADAR
I-VZE 2	ZUPTI INT I-VZE 3.8	HAZIL I-VZE 12.7 RADAR	IM	2300	4000	5000 6000 7000 8000
*1200				*1200 2300		
VGSi and ILS glidepath not coincident (VGSi Angle 3.00/TCH 80).				GS 3.00° TCH 55		
0.1	0.9	0.8	3.2 NM	5.7 NM	3.1 NM	3.1 NM 3.1 NM 3.1 NM 3.1 NM
CATEGORY	A		B		C	
S-ILS 28C	851/18 200 (200-½)					
S-LOC 28C	1200/24	549 (600-½)		1200/60	549 (600-1¼)	
ZUPTI FIX MINIMUMS (DUAL VOR RECEIVERS OR DME REQUIRED)						
S-LOC 28C	1040/24	389 (400-½)		1040/35	389 (400-¾)	

EC-3, 15 MAY 2025 to 12 JUN 2025

EC-3, 15 MAY 2025 to 12 JUN 2025