

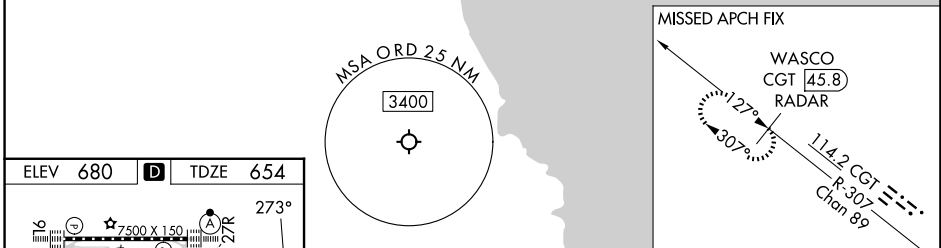
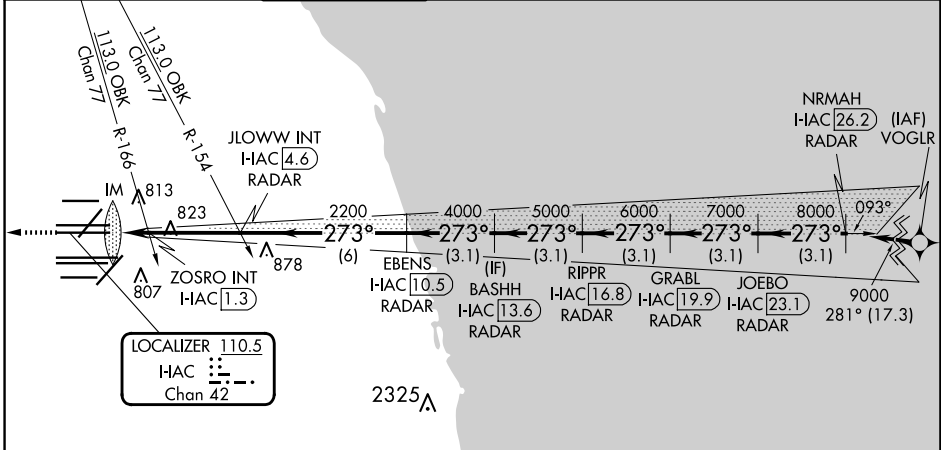
LOC/DME I-AIC 110.5 Chan 42	APP CRS 273°	Rwy ldg 11260 TDZE 654 Apt Elev 680
---	------------------------	--

ILS or LOC RWY 27L

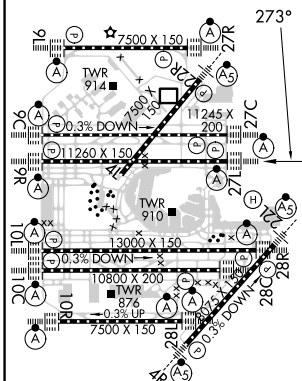
CHICAGO O'HARE INTL (ORD)

RNP APCH-GPS from VOGLR. Aircraft not GPS equipped - RADAR required for procedure entry. DME or RADAR required.	ALSF-2 	MISSED APPROACH: Climb to 1200 then climb to 4000 on heading 265° and on CGT VORTAC R-307 to WASCO/CGT 45.8 DME/RADAR and hold.
<p>▼ Simultaneous approach authorized. For inop ALS, increase S-LOC 27L Cat C/D visibility to 1 1/8 SM.</p>		

D-ATIS 135.4 282.225	CHICAGO APP CON 119.0 292.125	O'HARE TOWER 126.9 348.0	GND CON 124.125 (TWR NORTH) 118.05 (TWR SOUTH) 226.675 (ALL TWRs)	(TWR CENTER) 121.75 (OBND) 121.9 (IBND)	CLNC DEL 121.6	CPDLC
--	---	------------------------------------	---	---	--------------------------	-------



ELEV 680	D	TDZE 654
----------	----------	----------



1200	4000	CGT R-307	WASCO CGT [45.8] RADAR	VGSI and ILS glidepath not coincident (VGSI Angle 3.00/TCH 77).
↑	hdg 265°	JLOWW INT I-AIC [4.6] RADAR	BASHH I-AIC [13.6] RADAR	GRABL I-AIC [19.9] RADAR
		ZOSRO INT I-AIC [1.3] RADAR	RIPPR I-AIC [16.8] RADAR	JOEBO I-AIC [23.1] RADAR
		I-AIC DME ANTENNA		NRMAH I-AIC [26.2] RADAR
		I-AIC [0.2]		
		2200		
		4000		
		5000		
		6000		
		7000		
		8000		
		9000		
		GS 3.00°		TCH 57
		0.1	1.3	3.3 NM
		3.3 NM	6 NM	3.1 NM
		3.1 NM	3.1 NM	3.1 NM
		3.1 NM	3.1 NM	3.1 NM
		3.1 NM	3.1 NM	3.1 NM

HIRL all Rwys					
TDZ/CL all Rwys except 4L					
FAF to MAP 4.7 NM					
Knots	60	90	120	150	180
Min:Sec	4:42	3:08	2:21	1:53	1:34

CATEGORY	A				B				C				D			
S-ILS 27L	854/18 200 (200-1/2)															
S-LOC 27L	1160/24				506 (500-1/2)				1160/55				506 (500-1)			
ZOSRO FIX MINIMUMS (DUAL VOR RECEIVERS OR DME REQUIRED)																
S-LOC 27L	1080/24				426 (400-1/2)				1080/40				426 (400-3/4)			

EC-3, 15 MAY 2025 to 12 JUN 2025

EC-3, 15 MAY 2025 to 12 JUN 2025