

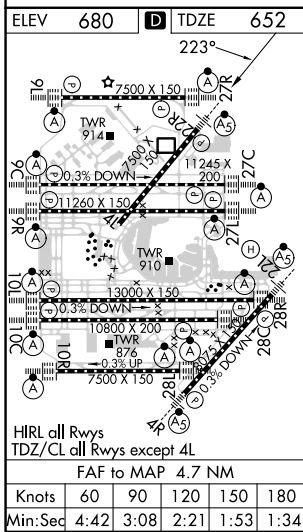
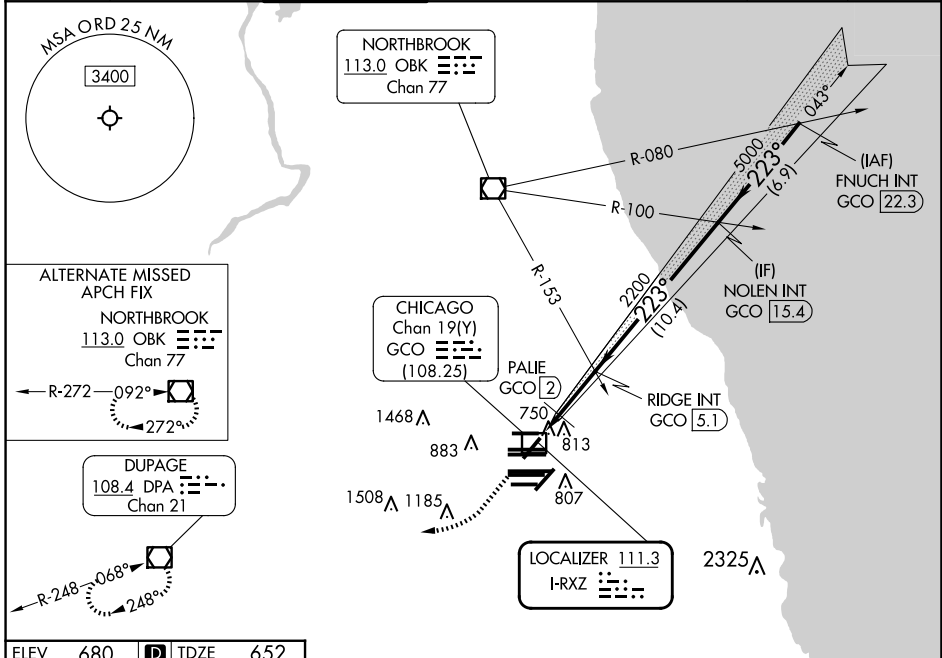
LOC I-RXZ 111.3	APP CRS 223°	Rwy ldg TDZE 7300 652	Apt Elev 680
---------------------------	------------------------	-------------------------------------------	------------------------

ILS or LOC RWY 22R

CHICAGO O'HARE INTL (ORD)

RADAR required for procedure entry.		MALSR	MISSED APPROACH: Climb to 1300 then climbing right turn to 4000 direct DPA VOR/DME and hold.	
Simultaneous approach authorized. DME from GCO DME.				

D-ATIS 135.4 282.225	CHICAGO APP CON 119.0 292.125	O'HARE TOWER 126.9 348.0	GND CON (TWR NORTH) 124.125 (TWR SOUTH) 118.05 (ALL TWRs) 226.675	(TWR CENTER) (OBND) 121.75 (IBND) 121.9	CLNC DEL 121.6	CPDLC
------------------------------------------	------------------------------------------------	-------------------------------------------	----------------------------------------------------------------------------------------------	----------------------------------------------------------	--------------------------	-------



ELEV 680	TDZE 652	1300 4000 DPA VGSI and ILS glidepath not coincident (VGSI Angle 3.00/TCH 69).		
1300 4000 DPA VGSI and ILS glidepath not coincident (VGSI Angle 3.00/TCH 69).		FNUCH INT GCO (22.3) RIDGE INT GCO (5.1) NOLEN INT GCO (15.4) 7000 GS 3.00° TCH 49		
1300 4000 DPA VGSI and ILS glidepath not coincident (VGSI Angle 3.00/TCH 69).		1220 2200 5000 7000 0.8 NM 0.8 NM 3.1 NM 10.4 NM 6.9 NM		
CATEGORY	A	B	C	D
S-ILS 22R	852/18 200 (200-½)			
S-LOC 22R	1220/24	568 (600-½)	1220-1¼	568 (600-1¼)
C CIRCLING	1220-1	540 (600-1)	1220-1½ 540 (600-1½)	1460-2½ 780 (800-2½)
PALIE FIX MINIMUMS				
S-LOC 22R	980/24	328 (300-½)	980/26	328 (300-½)
C CIRCLING	1220-1	540 (600-1)	1220-1½ 540 (600-1½)	1460-2½ 780 (800-2½)

EC-3, 15 MAY 2025 to 12 JUN 2025

EC-3, 15 MAY 2025 to 12 JUN 2025