

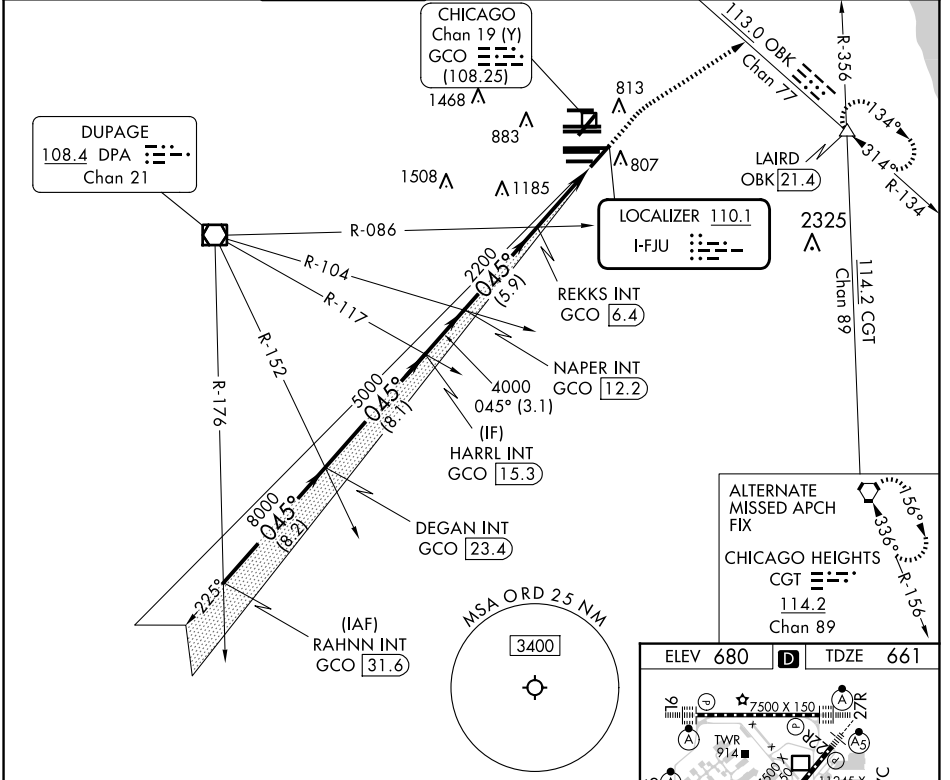
LOC I-FJU 110.1	APP CRS 045°	Rwy ldg TDZE Apt Elev	8075 661 680
---------------------------	------------------------	-----------------------------	---

ILS or LOC RWY 4R

CHICAGO O'HARE INTL (ORD)

RADAR required for procedure entry.		MALSR	MISSED APPROACH: Climb to 1200 then climbing right turn to 4000 on heading 060° and OBK VOR/DME R-134 to LAIRD INT/OBK 21.4 DME and hold.	
-------------------------------------	--	-------	---	--

D-ATIS 135.4 282.225	CHICAGO APP CON 119.0 292.125	O'HARE TOWER 120.75 348.0	124.125 (TWR NORTH) 118.05 (TWR SOUTH) 226.675 (ALL TWRs)	GND CON (TWR CENTER) 121.75 (OBND) 121.9 (IBND)	CLNC DEL 121.6	CPDLC
--	---	-------------------------------------	--	---	--------------------------	-------



RAHNN INT GCO [31.6]	VGSI and ILS glidepath not coincident (VGSI Angle 3.00/TCH 67).		1200	4000	OBK R-134	LAIRD
DEGAN INT GCO [23.4]	HARRL INT GCO [15.3]	NAPER INT GCO [12.2]	REKKS INT GCO [6.4]	2128	hdg 060°	
GS 3.00° TCH 52		8000	5000	4000	2200	
8.2 NM		8.1 NM	3.1 NM	5.9 NM	4.4 NM	

ELEV 680	D	TDZE 661
----------	---	----------

HRL all Rwys	TDZ/CL all Rwys except 4L	FAF to MAP 4.4 NM			
Knots	60	90	120	150	180
Min:Sec	4:24	2:56	2:12	1:46	1:28

EC-3, 15 MAY 2025 to 12 JUN 2025

EC-3, 15 MAY 2025 to 12 JUN 2025