

WAAS CH 82721 W36A	APP CRS 005°	Rwy Idg TDZE Apt Elev	8005 862 887
--	------------------------	-----------------------------	---

RNAV (GPS) RWY 36

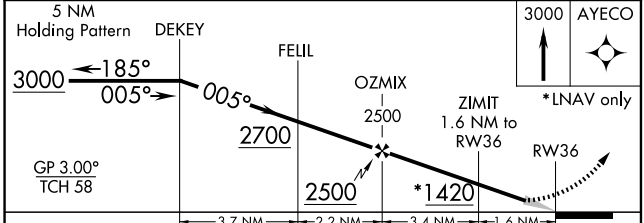
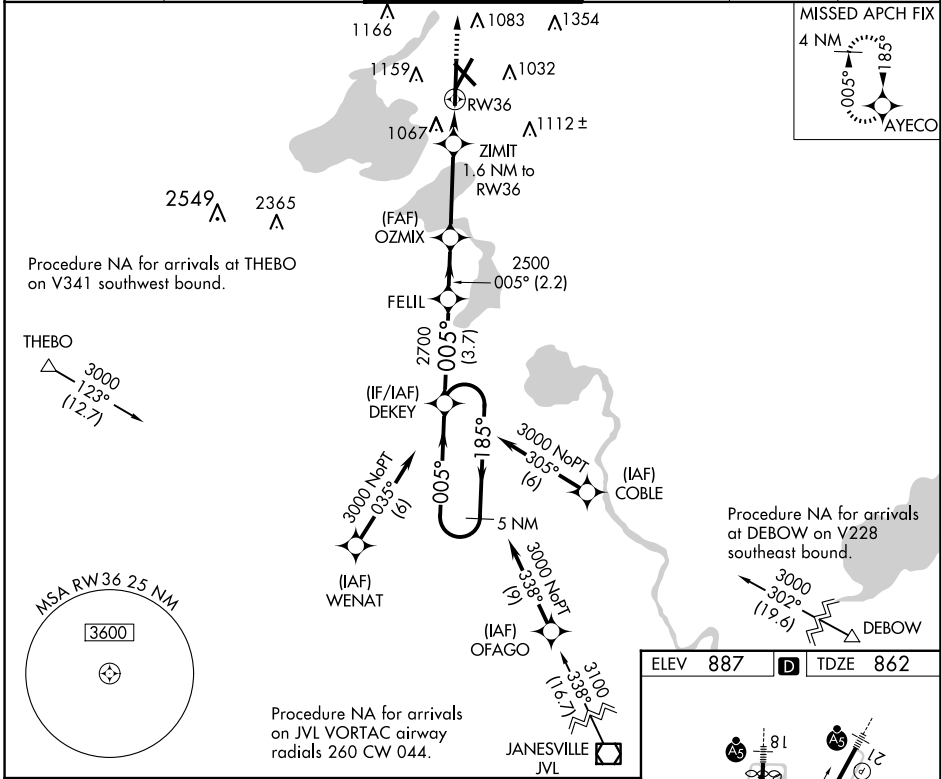
DANE COUNTY RGNL/TRUAX FLD (MSN)

For uncompensated Baro-VNAV systems, LNAV/VNAV NA below -19°C (-2°F) or above 54°C (130°F). DME/DME RNP-0.3 NA. For inop ALSF-2, increase LNAV/VNAV all Cats visibility to 1½ miles. **RVR 1800 authorized with use of FD or AP or HUD to DA.

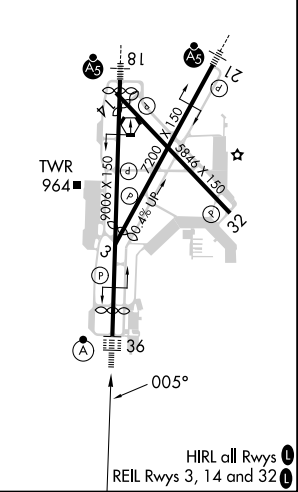


MISSED APPROACH:
Climb to 3000 direct
AYECO and hold.

ATIS 124.65 278.3	MADISON APP CON * 135.45 343.7	MADISON TOWER * 119.3 (CTAF) 0 257.8	GND CON 121.9 348.6	CLNC DEL 121.625	UNICOM 122.95
-----------------------------	--	--	-------------------------------	----------------------------	-------------------------



ELEV 887	D	TDZE 862
----------	---	----------



CATEGORY	A	B	C	D
LPV DA **		1062/24	200 (200-½)	
LNAV/VNAV DA		1331/60	469 (500-1¼)	
LNAV MDA	1300/24	438 (500-½)	1300/40	438 (500-¾)
CIRCLING	1420-1	1460-1	1460-1½	1700-2¾
	533 (600-1)	573 (600-1)	573 (600-1½)	813 (900-2¾)

EC-3, 15 MAY 2025 to 12 JUN 2025

EC-3, 15 MAY 2025 to 12 JUN 2025