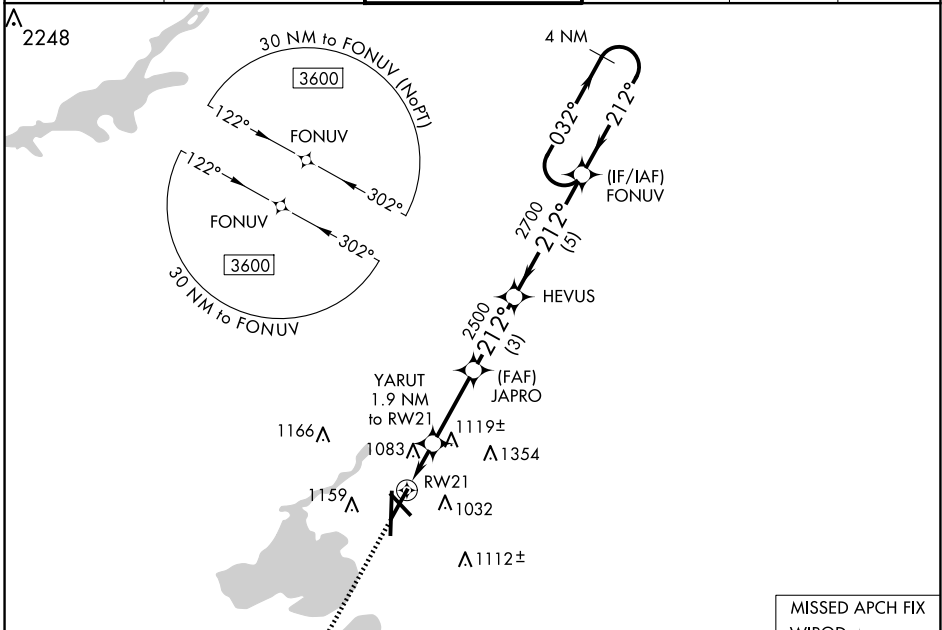


WAAS CH 42829 W21A	APP CRS 212°	Rwy ldg TDZE 887 Apt Elev 887	7015
--	------------------------	---	-------------

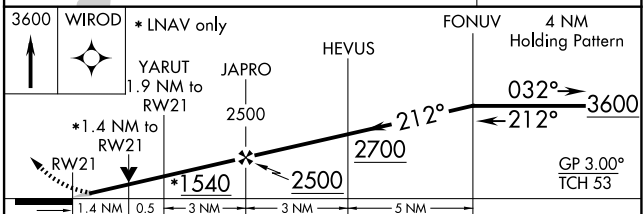
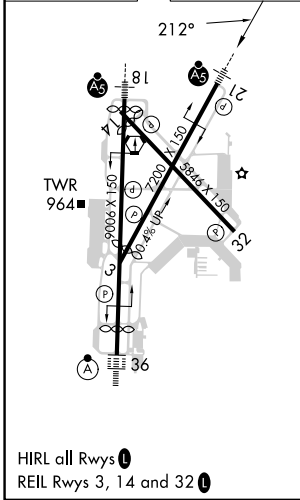
RNAV (GPS) RWY 21
DANE COUNTY RGNL/TRUAX FLD (MSN)

A	For uncompensated Baro-VNAV systems, LNAV/VNAV NA below -20°C (-4°F) or above 54°C (130°F). DME/DME RNP-0.3 NA. For inop MALSR, increase LNAV/VNAV all Cats visibility to 1¾ mile and LNAV Cat C/D visibility to 1½ mile.	MALSR 	MISSED APPROACH: Climb to 3600 direct WIROD and hold.

ATIS 124.65 278.3	MADISON APP CON * 135.45 343.7	MADISON TOWER * 119.3 (CTAF) 0 257.8	GND CON 121.9 348.6	CLNC DEL 121.625	UNICOM 122.95
-----------------------------	--	---	-------------------------------	----------------------------	-------------------------



ELEV 887	D	TDZE 887
-----------------	----------	-----------------



	A		B		C		D	
CATEGORY	A		B		C		D	
LPV DA	1087-½		200 (200-½)					
LNAV/VNAV DA	1412-1¾		525 (600-1¾)					
LNAV MDA	1380-½		493 (500-½)		1380-1		493 (500-1)	
C CIRCLING	1420-1		1460-1		1460-1½		1700-2¾	
	533 (600-1)		573 (600-1)		573 (600-1½)		813 (900-2¾)	