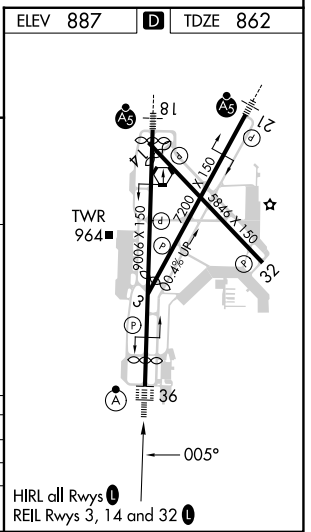
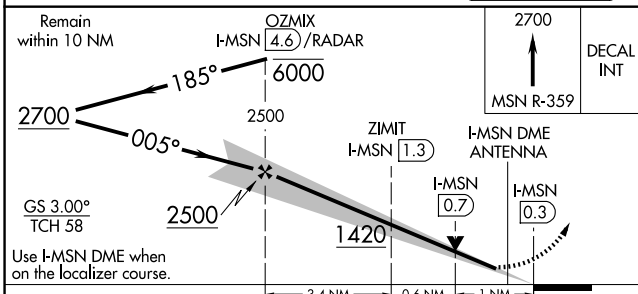
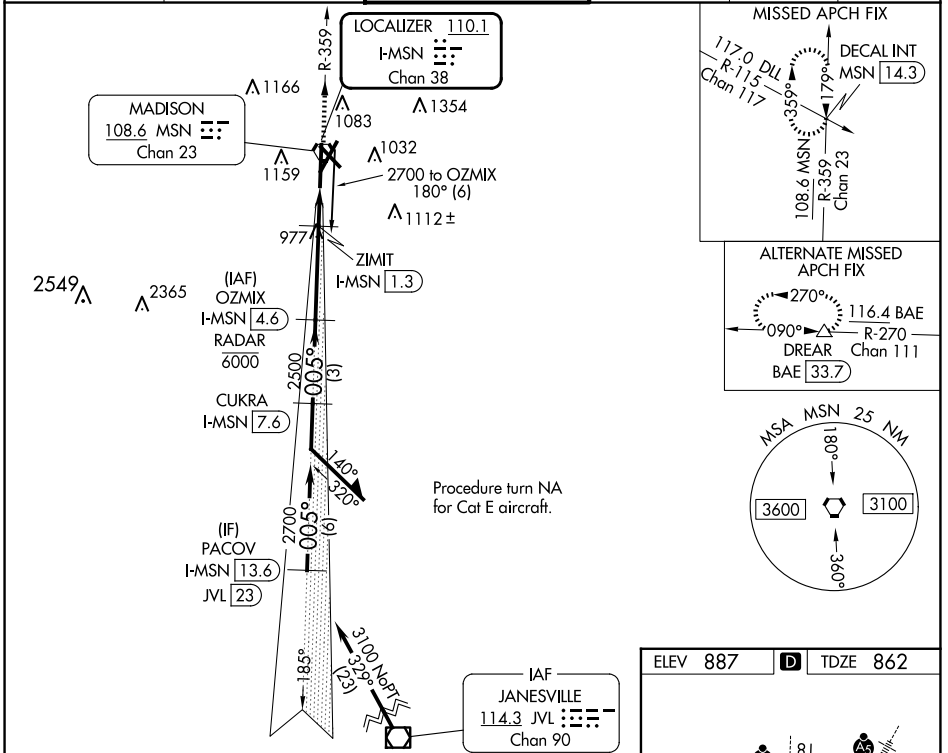


| | | |
|---|------------------------|---|
| LOC/DME I-MSN 110.1 Chan 38 | APP CRS 005° | Rwy Idg TDZE 862 Apt Elev 887 |
|---|------------------------|---|

ILS or LOC/DME RWY 36

DANE COUNTY RGNL/TRUAX FLD (MSN)

| | | | | | |
|--|--|---------------------------------------|--|--|--|
| DME or RADAR required. | | ALSIF-2 | | MISSED APPROACH: Climb to 2700 on MSN VORTAC R-359 to DECAL INT/MSN 14.3 DME and hold. | |
| <p>▼ For inop ALS, increase S-ILS 36 Cat E visibility to RVR 4000 and S-LOC 36 Cat C/D/E visibility to RVR 5500. **RVR 1800 authorized with use of FD or AP or HUD to DA.</p> | | <p>ATIS 124.65 278.3</p> | | <p>MADISON APP CON * 135.45 343.7</p> | |
| <p>MADISON TOWER * 119.3 (CTAF) 0 257.8</p> | | <p>GND CON 121.9 348.6</p> | | <p>CLNC DEL 121.625</p> | |
| <p>UNICOM 122.95</p> | | | | | |



| CATEGORY | A | B | C | D | E |
|-------------|-----------------------|-----------------------|-------------------------|------------------------|-----------------------|
| S-ILS 36 ** | 1062/24 200 (200-½) | | | | |
| S-LOC 36 | 1240/24 | 378 (400-½) | 1240/35 | 378 (400-¾) | |
| CIRCLING | 1420-1 533 (600-1) | 1460-1 573 (600-1) | 1460-1½ 573 (600-1½) | 1700-2¾ 813 (900-¾) | 1700-3 813 (900-3) |

EC-3, 15 MAY 2025 to 12 JUN 2025

EC-3, 15 MAY 2025 to 12 JUN 2025