

WAAS CH 86824 W27A	APP CRS 270°	Rwy Idg TDZE 581 Apt Elev 590
--	------------------------	---

RNAV (GPS) RWY 27

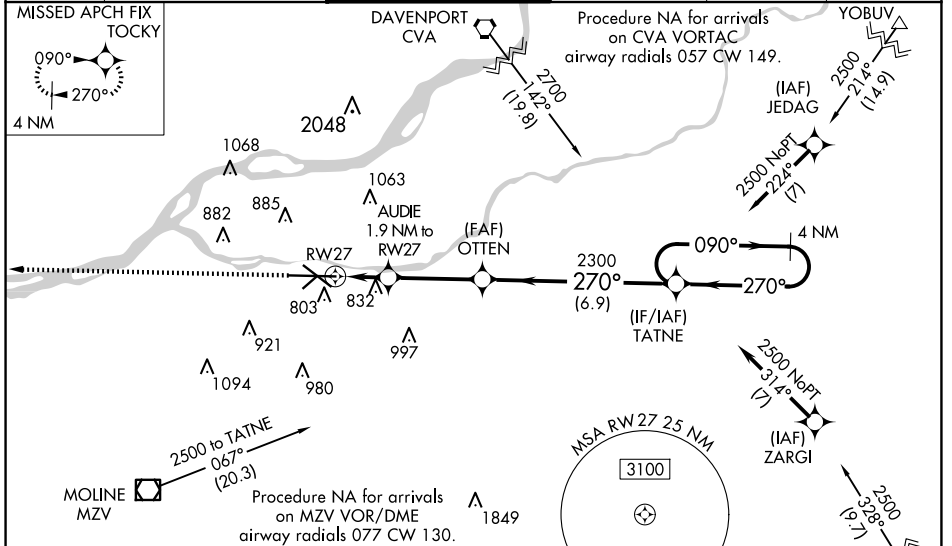
QUAD CITIES INTL (MLI)

⚠ Circling to Rwy 5 NA at night. Baro-VNAV NA when using Davenport altimeter setting. For uncompensated Baro-VNAV systems, LNAV/VNAV NA below -26°C (-14°F) or above 40°C (104°F). DME/DME RNP-0.3 NA. When local altimeter setting not received, use Davenport altimeter setting; increase LPV DA to 828 feet and LNAV/VNAV DA to 1233 feet and LNAV/VNAV visibility all Cats ½ SM; increase all MDA 60 feet and LNAV visibility Cats C and D ¼ SM. Circling visibility Cats C and D ¼ SM. For inoperative ALS, increase LNAV/VNAV visibility all Cats to 2 SM, LNAV visibility Cats C and D to 1 ½ SM. When using Davenport altimeter setting increase LNAV visibility Cats C and D to 1 ½ SM.
****RVR 1800 authorized with use of FD or AP or HUD to DA.**

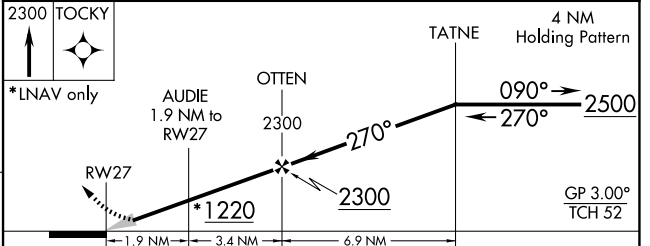
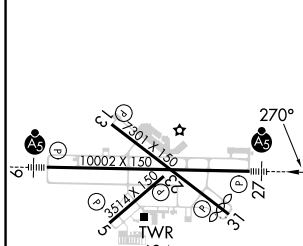
MALSR

MISSED APPROACH:
Climb to 2300 direct TOCKY and hold.

ATIS 121.2	QUAD CITY APP CON * 125.95 257.8	QUAD CITY TOWER * 119.4(CTAF) 0 269.55	GND CON 121.9	CLNC DEL 124.05	UNICOM 122.95
----------------------	--	--	-------------------------	---------------------------	-------------------------



ELEV 590	D	TDZE 581
----------	----------	----------



CATEGORY	A	B	C	D
LPV DA**	781/24		200 (200-½)	
LNAV/VNAV DA	1186-1 ½		605 (600-1 ½)	
LNAV MDA	1100/24	519 (600-½)	1100/55	519 (600-1)
CIRCLING	1140-1 550 (600-1)	1200-1 610 (700-1)	1320-2 730 (800-2)	1420-2 ¾ 830 (900-2 ¾)

MIRL Rwy 5-23
REIL Rwys 13 and 31
HIRL Rwys 9-27 and 13-31

EC-3, 15 MAY 2025 to 12 JUN 2025

EC-3, 15 MAY 2025 to 12 JUN 2025