

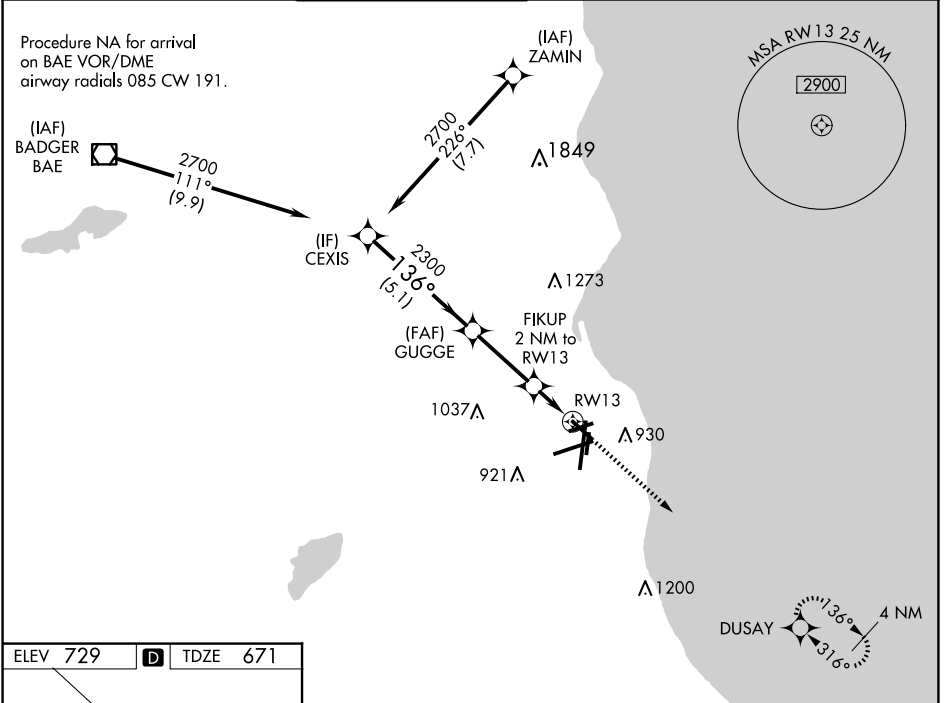
WAAS CH <b>99342</b> <b>W13A</b>	APP CRS <b>136°</b>	Rwy Idg TDZE Apt Elev	<b>4797</b> <b>671</b> <b>729</b>
--	------------------------	-----------------------------	---

# RNAV (GPS) RWY 13

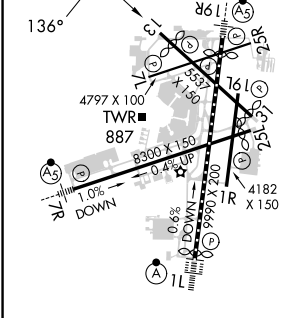
GENERAL MITCHELL INTL (MKE)

RNP APCH.		MISSED APPROACH: Climb to 2900 direct DUSAY and hold.	
▼ Rwy 13 helicopter visibility reduction below 3/4 SM NA. For uncompensated Baro-VNAV systems, LNAV/VNAV NA below -19°C or above 54°C.			

D-ATIS <b>126.4</b>	MILWAUKEE APP CON <b>126.5 307.0</b>	MILWAUKEE TOWER <b>124.575 269.05</b>	GND CON <b>121.8 263.125</b>	CLNC DEL <b>120.8</b>	CPDLC
------------------------	---	--	---------------------------------	--------------------------	-------



ELEV 729	<b>D</b>	TDZE 671
----------	----------	----------



TDZ/CL Rwy 1L  
REIL Rws 1R, 7L,  
13, 25L, 25R, and 31  
HIRL Rws 1L-19R and 7R-25L  
MIRL Rws 1R-19L, 13-31, and 7L-25R

CEXIS	2700	136°	GUGGE	2300	FIKUP 2 NM to RW13	*1.3 NM to RW13	RW13	*LNAV only:	2900	DUSAY
								↑	✧	
GP 3.00° TCH 54		2300	*1360							
5.1 NM		3 NM		0.7 NM		1.3 NM				
CATEGORY	A	B	C	D						
LPV DA	971-1		300 (300-1)							
LNAV/ VNAV DA	1189-1 3/8		518 (500-1 3/8)							
LNAV MDA	1140-1	469 (500-1)	1140-1 3/8	469 (500-1 3/8)						
<b>C</b> CIRCLING	1240-1	511 (600-1)	1240-1 1/2	511 (600-1 1/2)	1360-2	631 (700-2)				

EC-3, 15 MAY 2025 to 12 JUN 2025

EC-3, 15 MAY 2025 to 12 JUN 2025