

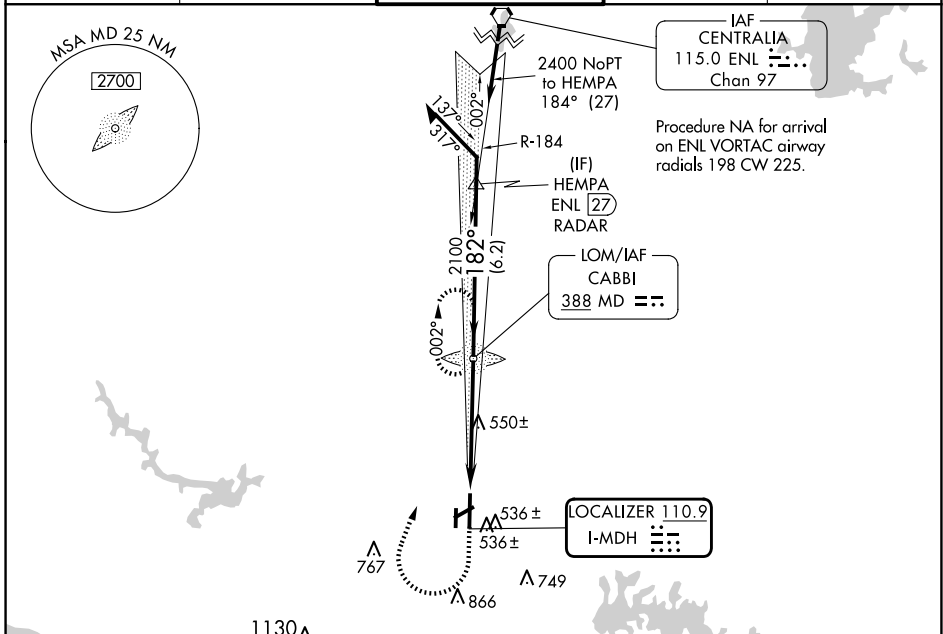
LOC I-MDH <b>110.9</b>	APP CRS <b>182°</b>	Rwy Idg TDZE Apt Elev	<b>6506</b> <b>407</b> <b>411</b>
---------------------------	------------------------	-----------------------------	---

# ILS or LOC RWY 18L

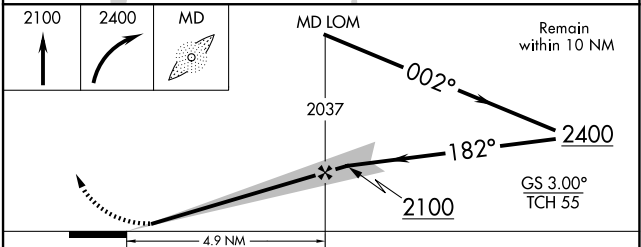
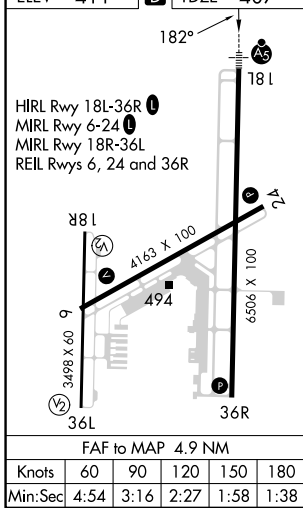
SOUTHERN ILLINOIS (MDH)

ADF required. ▼ ▲ Circling Rwy 6, 36L NA at night.	MALSR ▲	MISSED APPROACH: Climb to 2100 then climbing right turn to 2400 direct CABBI LOM and hold.
--	------------	--

ATIS <b>119.725</b>	KANSAS CITY CENTER <b>127.475 346.275</b>	SOUTHERN TOWER ★ <b>125.35(CTAF) 322.4</b>	GND CON <b>121.8</b>	UNICOM <b>122.95</b>
------------------------	--	---	-------------------------	-------------------------



ELEV 411 TDZE 407



CATEGORY	A	B	C	D
S-ILS 18L	607-½ 200 (200-½)			
S-LOC 18L	800-½ 393 (400-½)	800-⅝ 393 (400-⅝)		
CIRCLING	900-1 489 (500-1)	920-1 509 (600-1)	1180-2¼ 769 (800-2¼)	1180-2½ 769 (800-2½)

EC-3, 15 MAY 2025 to 12 JUN 2025

EC-3, 15 MAY 2025 to 12 JUN 2025