

LOC I-JVL 109.1	APP CRS 044°	Rwy ldg 6701
		TDZE 806
		Apt Elev 808

ILS or LOC RWY 4

SOUTHERN WISCONSIN RGNL (JVL)

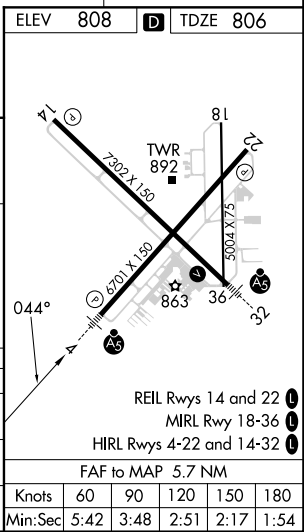
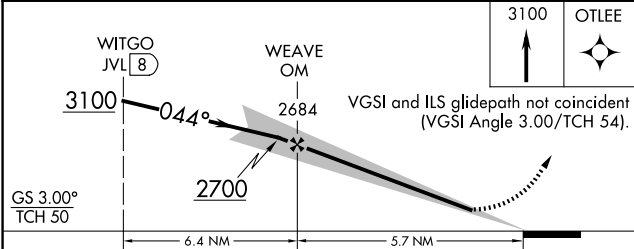
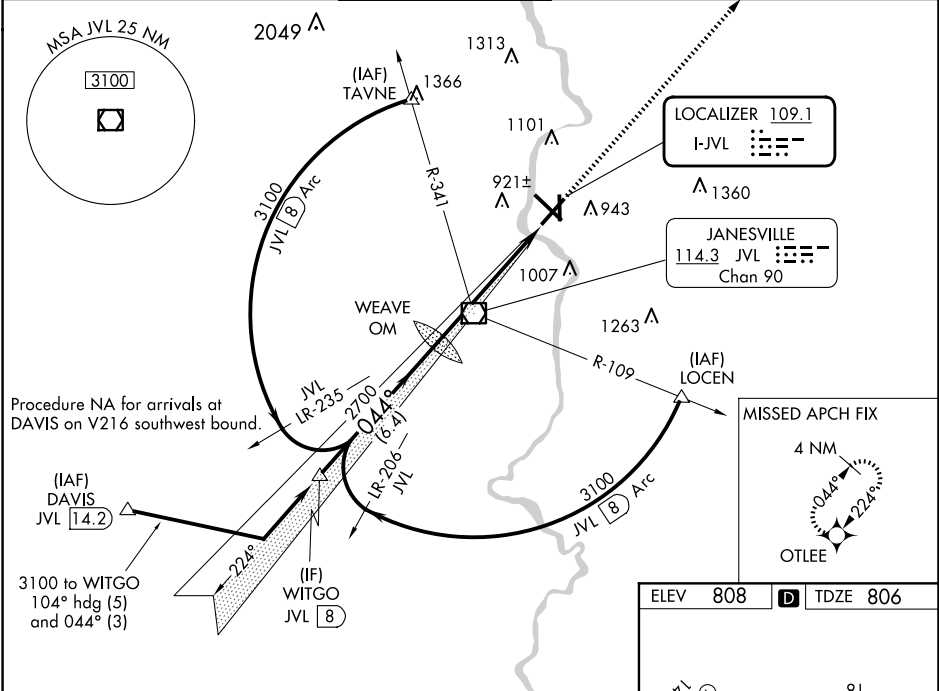
DME required. RNP APCH - GPS.

▼ When local altimeter setting not received, use Rockford altimeter setting and increase DA 69 feet and all MDAs 80 feet; increase S-LOC 4 Cats C/D and Circling Cats C/D 1/4 SM. For inop ALS when using Rockford altimeter setting; increase S-ILS 4 all Cats visibility to 7/8 SM and S-LOC 4 Cats C/D visibility to 1/8 SM. Circling Rwy 18 NA at night. DME from JVL VOR/DME. DME use requires simultaneous reception of I-JVL and JVL VOR/DME.



MISSED APPROACH:
Climb to 3100 direct
OTLEE and hold.

ATIS 128.25	ROCKFORD APP CON 121.0 327.0	JANESVILLE TOWER ★ 118.8(CTAF) 225.4	GND CON 121.65	CLNC DEL 121.65	UNICOM 122.95
-----------------------	--	--	--------------------------	---------------------------	-------------------------



CATEGORY	A	B	C	D
S-ILS 4	1006-1/2		200 (200-1/2)	
S-LOC 4	1400-1/2	594 (600-1/2)	1400-1 594 (600-1)	1400-1 1/4 594 (600-1 1/4)
CIRCLING	1400-1	592 (600-1)	1420-1 3/4 612 (700-1 3/4)	1460-2 652 (700-2)

EC-3, 15 MAY 2025 to 12 JUN 2025

EC-3, 15 MAY 2025 to 12 JUN 2025