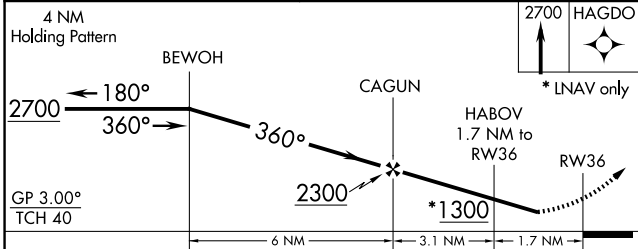
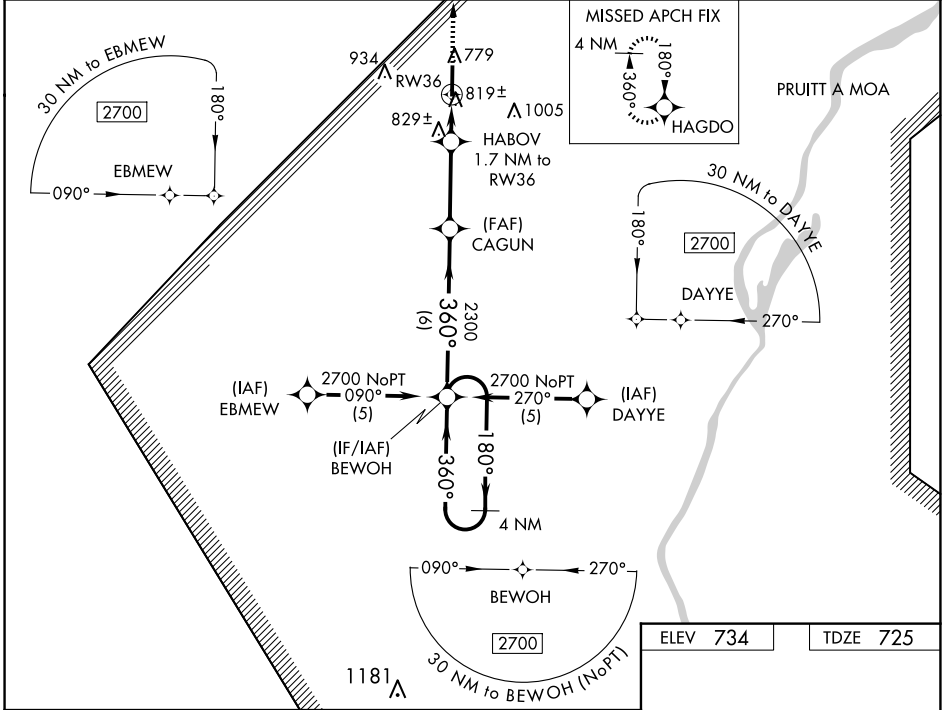


WAAS CH <b>97712</b> <b>W36A</b>	APP CRS <b>360°</b>	Rwy Idg TDZE Apt Elev	<b>5905</b> <b>725</b> <b>734</b>
--	------------------------	-----------------------------	---

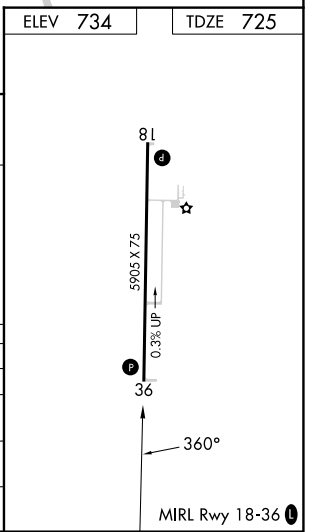
# RNAV (GPS) RWY 36

MOUNT STERLING MUNI (I63)

RNP APCH.		<p>Baro-VNAV NA. Rwy 36 helicopter visibility reduction below <math>\frac{3}{4}</math> SM NA. When local altimeter setting not received, use Quincy altimeter setting: increase Circling Cat C and D MDA 60 feet and visibility Circling Cat C and D <math>\frac{1}{4}</math> SM.</p>		<p>MISSED APPROACH: Climb to 2700 direct HAGDO and hold.</p>	
AWOS-3PT <b>118.325</b>	UIN ASOS <b>121.425</b>	KANSAS CITY CENTER <b>126.225 317.775</b>		UNICOM <b>122.8 (CTAF) 0</b>	



CATEGORY	A	B	C	D
LPV DA		1074-1 $\frac{1}{4}$	349 (400-1 $\frac{1}{4}$ )	
LNAV/VNAV DA		1136-1 $\frac{1}{2}$	411 (500-1 $\frac{1}{2}$ )	
LNAV MDA	1140-1	415 (500-1)	1140-1 $\frac{1}{4}$	415 (500-1 $\frac{1}{4}$ )
CIRCLING	1200-1	466 (500-1)	1360-1 $\frac{3}{4}$ 626 (700-1 $\frac{3}{4}$ )	1360-2 626 (700-2)



EC-3, 15 MAY 2025 to 12 JUN 2025

EC-3, 15 MAY 2025 to 12 JUN 2025