

| | |
|------------------------|------------------------|
| APP CRS 127° | Rwy Idg 4494 |
| | TDZE 882 |
| | Apt Elev 887 |

RNAV (GPS) RWY 13

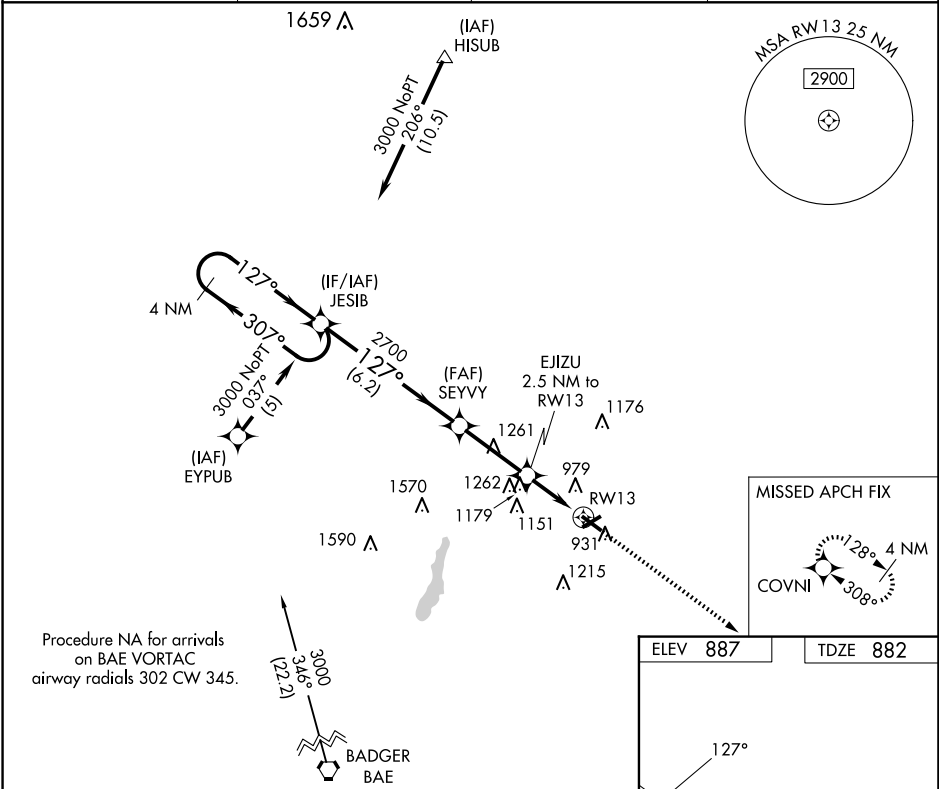
WEST BEND MUNI (E/TB)

RNP APCH - GPS.

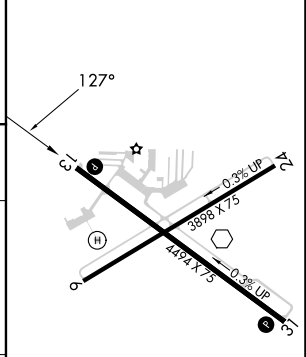
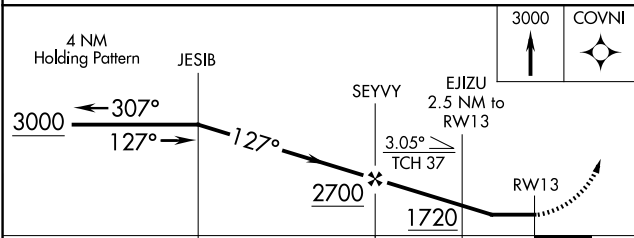
⚠ When local altimeter setting not received, use Milwaukee/Lawrence J Timmerman altimeter setting: increase all MDA 80 feet and increase LNAV Cat C/D visibility ½ SM and Circling Cat C/D visibility ¼ SM. Night landing: Rwy 6 NA. Helicopter visibility reduction below ¼ SM NA.

MISSED APPROACH:
Climb to 3000 direct COVNI and hold.

| | | | |
|------------------------|--|---------------------------|----------------------------------|
| AWOS-3 120.0 | MILWAUKEE APP CON 125.35 307.0 | CLNC DEL 124.75 | UNICOM 123.05 (CTAF) 0 |
|------------------------|--|---------------------------|----------------------------------|



| | |
|----------|----------|
| ELEV 887 | TDZE 882 |
|----------|----------|



| CATEGORY | A | B | C | D |
|----------|--------------------|--------------------|----------------------|----------------------|
| LNAV MDA | 1480-1 598 (600-1) | | 1480-1½ 598 (600-1½) | 1480-1¾ 598 (600-1¾) |
| CIRCLING | 1480-1 593 (600-1) | 1520-1 633 (700-1) | 1560-2 673 (700-2) | 1560-2¼ 673 (700-2¼) |

REIL Rwy 13 and 31 0

MIRL Rwy 6-24 and 13-31 0

EC-3, 15 MAY 2025 to 12 JUN 2025

EC-3, 15 MAY 2025 to 12 JUN 2025