

WAAS CH 82002 W04A	APP CRS 047°	Rwy Idg TDZE 1642 Apt Elev 1642
--	------------------------	---

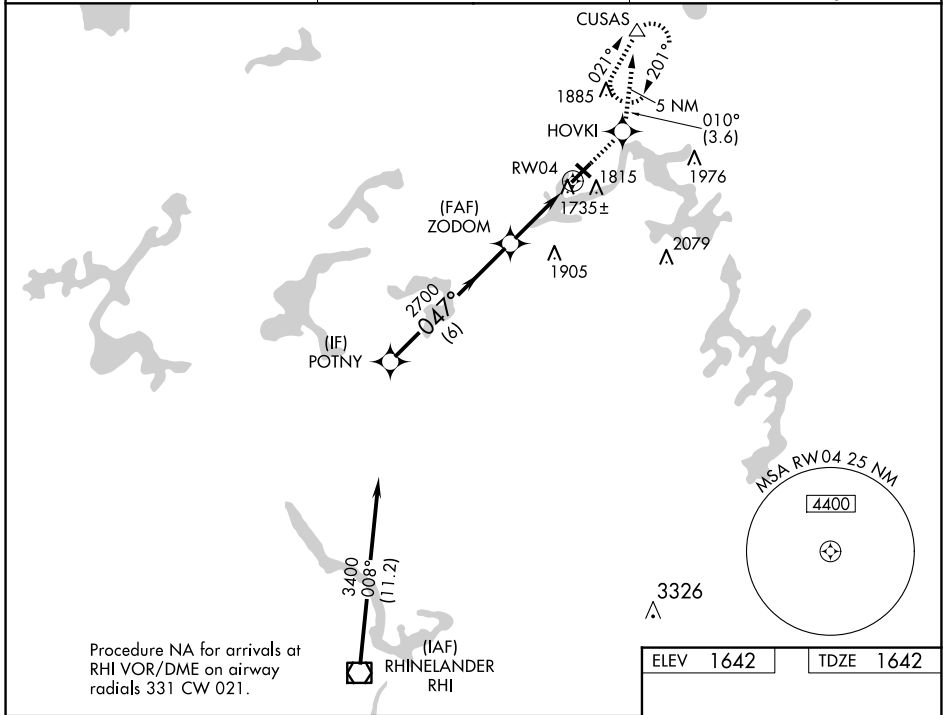
RNAV (GPS) RWY 4

EAGLE RIVER UNION (EGV)

▼ Baro-VNAV NA when using Minocqua-Woodruff altimeter setting. For uncompensated Baro-VNAV systems, LNAV/VNAV NA below -18° C (0° F) or above 44° C (112° F).
 ▲ DME/DME RNP-0.3 NA. Visibility reduction by helicopters NA. When local altimeter setting not received, use Minocqua-Woodruff altimeter setting and increase LPV DA to 2017, LNAV/VNAV DA to 2052, and all MDAs 60 feet. Increase Circling Cat C/D visibility ¼ SM.

MISSED APPROACH: Climb to 3500 direct HOVKI and on track 010° to CUSAS and hold.

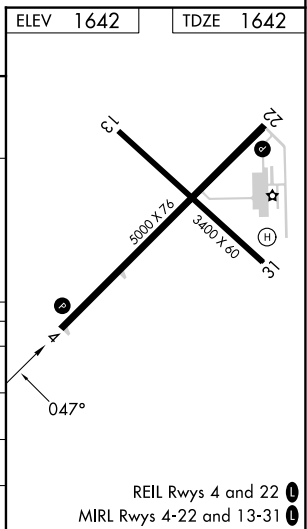
AWOS-3 118.325	MINNEAPOLIS CENTER 133.65 281.5	UNICOM 122.8 (CTAF) 0
--------------------------	---	---------------------------------



EC-3, 15 MAY 2025 to 12 JUN 2025

EC-3, 15 MAY 2025 to 12 JUN 2025

	POTNY	ZODOM	HOVKI	CUSAS
	3400	2700	3500	
		047°	tr 010°	
GP 3.00° TCH 40				
	6 NM	3.2 NM		
CATEGORY	A	B	C	D
LPV DA	1970-1¼		328 (400-1¼)	
LNAV/VNAV DA	2005-1¼		363 (400-1¼)	
LNAV MDA	2080-1	438 (500-1)	2080-1½ 438 (500-1½)	2080-1½ 438 (500-1½)
CIRCLING	2120-1¼	478 (500-1¼)	2260-1¾ 618 (700-1¾)	2340-2¼ 698 (700-2¼)



REIL Rws 4 and 22 0
 MIRL Rws 4-22 and 13-31 0