

LOC/DME I-LBJ 110.7 Chan 44	APP CRS 047°	Rwy Idg 5000 TDZE 1642 Apt Elev 1642
--	------------------------	---

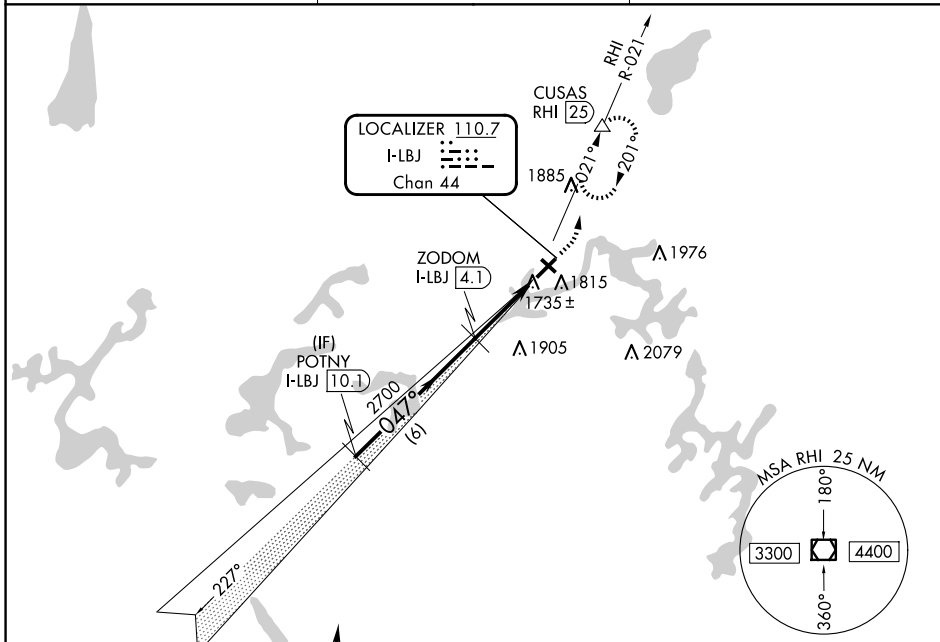
LOC/DME RWY 4

EAGLE RIVER UNION (EGV)

Visibility reduction by helicopters NA. When local altimeter setting not received, use Minocqua-Woodruff altimeter setting and increase all MDAs 60 feet and Circling Cat C/D visibility ¼ SM.

MISSED APPROACH: Climb to 2100 then climbing left turn to 3500 on heading 015° and RHI R-021 to CUSAS/RHI 25 DME and hold.

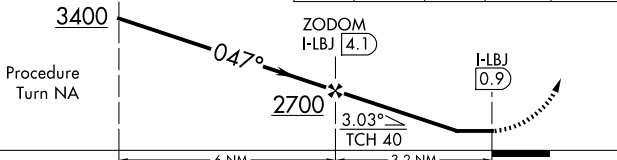
AWOS-3 118.325	MINNEAPOLIS CENTER 133.65 281.5	UNICOM 122.8 (CTAF) 1
--------------------------	---	--



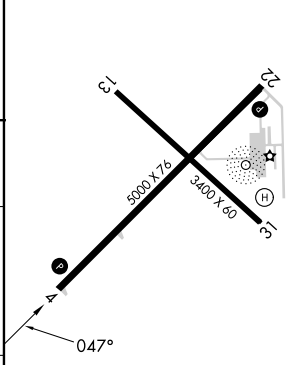
Procedure NA for arrivals at RHI VOR/DME via V191 southeast bound, V63 southbound.

IAF
RHINELANDER
115.05 RHI
Chan 97(Y)

VGSI and descent angles not coincident (VGSI Angle 3.00/TCH 45). POTNY I-LBJ 10.1	2100	3500	hdg 015°	RHI R-021	CUSAS Δ
---	------	------	----------	-----------	----------------



ELEV 1642	TDZE 1642
-----------	-----------



CATEGORY	A	B	C	D
S-4	2000-1 358 (400-1)			
CIRCLING	2120-1 478 (500-1)		2260-1¾ 618 (700-1¾)	2340-2¼ 698 (700-2¼)

REIL Rwy 4 and 22 **1**
MIRL Rwy 4-22 and 13-31 **1**

EC-3, 15 MAY 2025 to 12 JUN 2025

EC-3, 15 MAY 2025 to 12 JUN 2025