


| | | | |
|--|------------------------|-----------------------------|---|
| WAAS CH 87006 W22A | APP CRS 224° | Rwy Idg TDZE Apt Elev | 7301 913 913 |
|--|------------------------|-----------------------------|---|

RNAV (GPS) RWY 22

CHIPPEWA VALLEY RGNL (EAU)

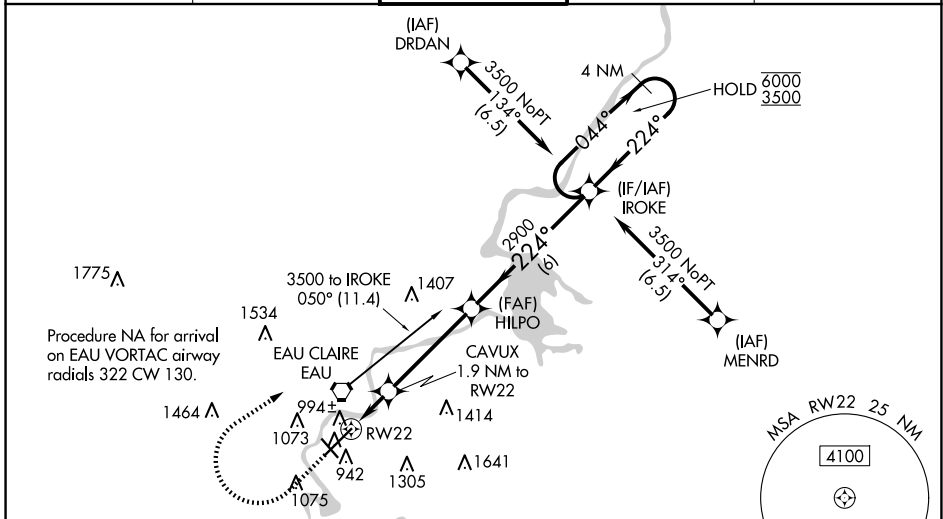
RNP APCH.

▼ Baro-VNAV and VDP NA when using Rice Lake altimeter setting. For uncompensated
 ▲ Baro-VNAV systems, LNAV/VNAV NA below -20°C or above 54°C. When local altimeter setting not received, use Rice Lake altimeter setting and increase LPV DA to 1223, LNAV/VNAV DA to 1285, and increase LNAV/VNAV visibility all Cats ¼ SM; increase all MDA 120 feet and LNAV Cats C/D visibility ¾ SM and Circling Cat C visibility ¼ SM. For inop ALS increase LNAV/VNAV visibility all Cats to ¾ SM and LNAV Cats C/D visibility to 1 SM. For inop ALS when using Rice Lake altimeter setting increase LPV visibility all Cats to 1 SM and LNAV Cats C/D visibility to 1 ¾ SM.

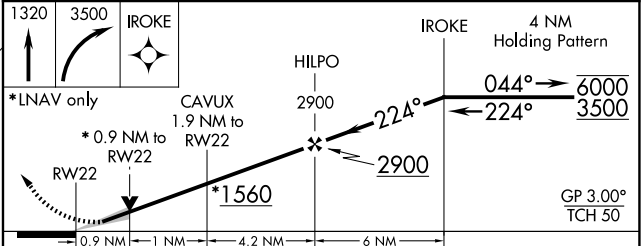
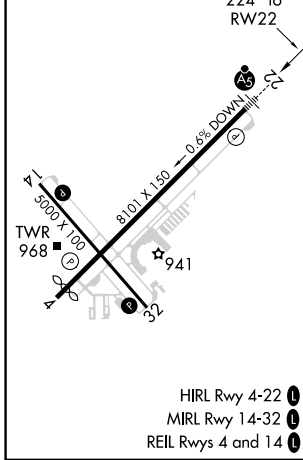
MALSRL


MISSED APPROACH: Climb to 1320 then climbing right turn to 3500 direct IROKE and hold.

| | | | | |
|------------------------|--|---|---------------------------|-------------------------|
| ATIS 126.025 | MINNEAPOLIS CENTER 125.3 335.6 | EAU CLAIRE TOWER ★ 118.575 (CTAF) 0 | GND CON 120.925 | UNICOM 122.95 |
|------------------------|--|---|---------------------------|-------------------------|



| | | |
|----------|----------|----------|
| ELEV 913 | D | TDZE 913 |
|----------|----------|----------|



| CATEGORY | A | B | C | D |
|-------------------|-----------------------|-----------------------|-------------------------|-------------------------|
| LPV DA | | 1113-½ | 200 (200-½) | |
| LNAV/VNAV DA | | 1175-½ | 262 (300-½) | |
| LNAV MDA | 1260-½ | 347 (400-½) | 1260-⅝ | 347 (400-⅝) |
| C CIRCLING | 1480-1 567 (600-1) | 1540-1 627 (700-1) | 1660-2¼ 747 (800-2¼) | 2200-3 1287 (1300-3) |

EC-3, 15 MAY 2025 to 12 JUN 2025

EC-3, 15 MAY 2025 to 12 JUN 2025