

LOC/DME I-EAU <b>109.5</b> Chan <b>32</b>	APP CRS <b>224°</b>	Rwy Idg TDZE Apt Elev	<b>7301</b> <b>913</b> <b>913</b>
---	------------------------	-----------------------------	---

# ILS or LOC RWY 22

CHIPPEWA VALLEY RGNL (EAU)

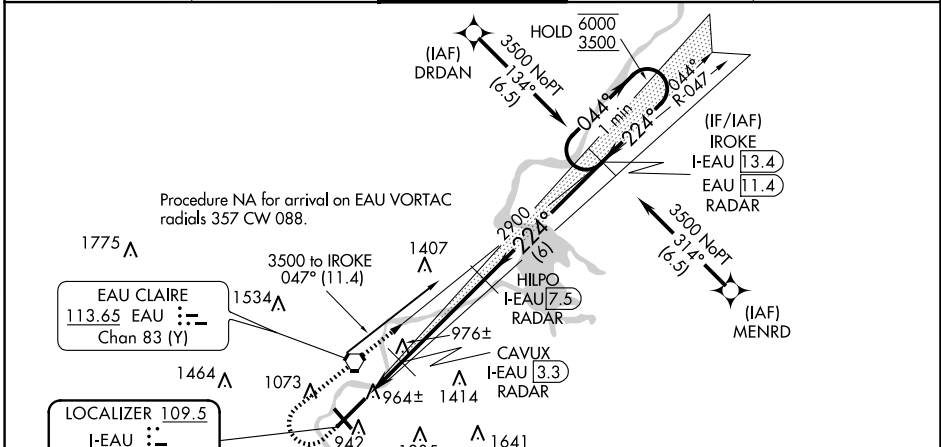
From DRDAN and MENRD RNAV-1 GPS required.  
DME or RADAR required.

**⚠** For inop ALS increase S-LOC 22 Cat C and D visibility to  $\frac{7}{8}$  SM. For inop ALS when using Rice Lake altimeter setting, increase S-ILS 22 all Cats visibility to 1 SM. When local altimeter setting not received, use Rice Lake altimeter setting and increase DA 110 feet and all MDA 120 feet, increase S-LOC 22 Cat C and D and Circling Cat C visibility  $\frac{1}{4}$  SM. VDP NA when using Rice Lake altimeter setting.

**MALSR**  
AS

**MISSED APPROACH:** Climb to 1600 then climbing right turn to 3500 on EAU VORTAC R-047 to IROKE/I-EAU LOC/DME 13.4 DME/RADAR and hold.

ATIS <b>126.025</b>	MINNEAPOLIS CENTER <b>125.3 335.6</b>	EAU CLAIRE TOWER ★ <b>118.575 (CTAF) 0</b>	GND CON <b>120.925</b>	UNICOM <b>122.95</b>
------------------------	--	---	---------------------------	-------------------------



ELEV 913 **D** TDZE 913

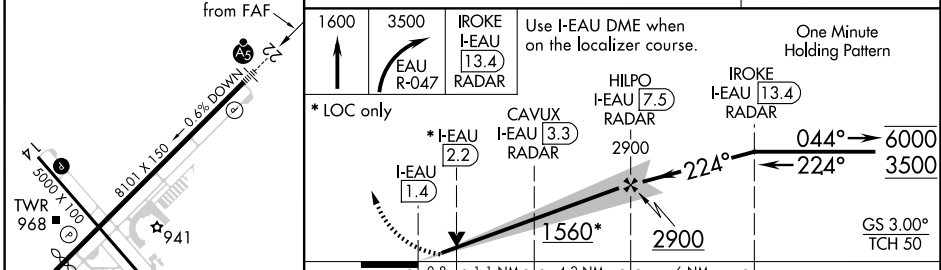
HIRL Rwy 4-22 **Ⓛ**  
MIRL Rwy 14-32 **Ⓛ**  
REIL Rws 4 and 14 **Ⓛ**

224° 6.1 NM from FAF

EAU CLAIRE 113.65 EAU **Ⓛ** Chan 83 (Y)  
LOCALIZER 109.5 I-EAU **Ⓛ** Chan 32

ALTERNATE MISSED APCH FIX  
EAU CLAIRE 113.65 Chan 83 (Y)

MSA EAU 25 NM  
3200  
4100



CATEGORY	A	B	C	D
S-ILS 22	1113- $\frac{1}{2}$	200 (200- $\frac{1}{2}$ )		
S-LOC 22	1220- $\frac{1}{2}$	307 (400- $\frac{1}{2}$ )		
<b>C</b> CIRCLING	1480-1 567 (600-1)	1540-1 627 (700-1)	1660-2 $\frac{1}{4}$ 747 (800-2 $\frac{1}{4}$ )	2200-3 1287 (1300-3)

EC-3, 15 MAY 2025 to 12 JUN 2025

EC-3, 15 MAY 2025 to 12 JUN 2025