

APP CRS 345°	Rwy Idg TDZE Apt Elev	3999 667 697
------------------------	-----------------------------	---

RNAV (GPS) RWY 34

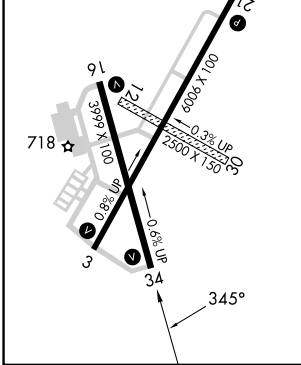
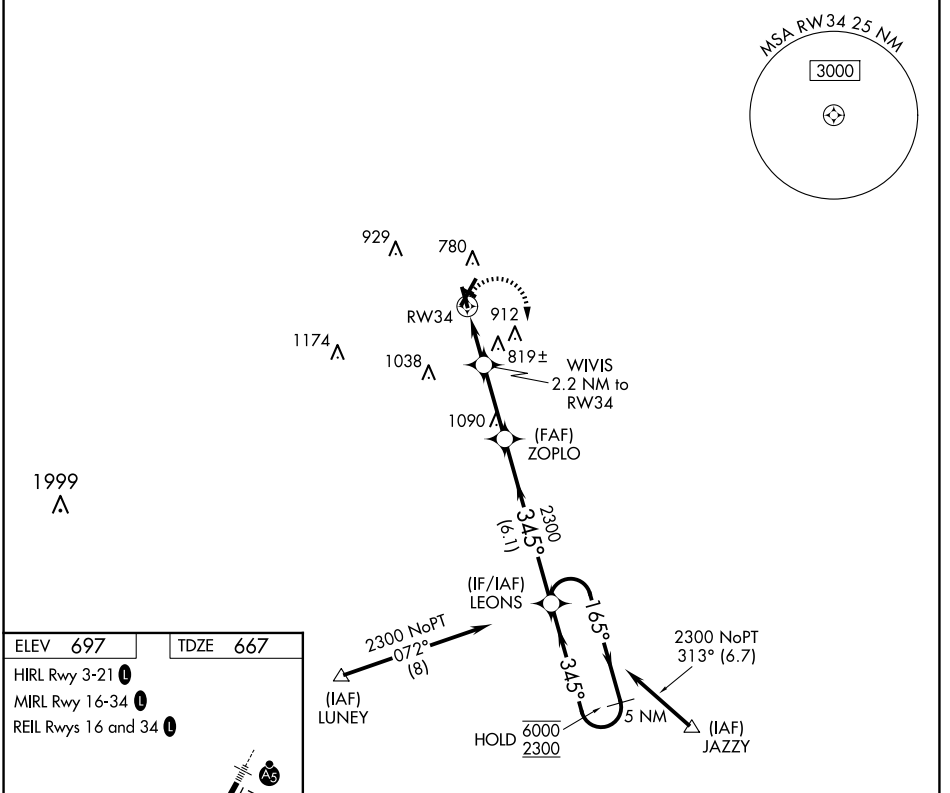
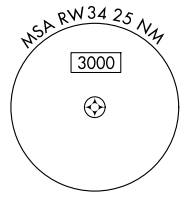
VERMILION RGNL (D/V)

RNP APCH - GPS.

▼ Circling NA to Rwy 12 and 30.
▲ Rwy 34 helicopter visibility reduction below 3/4 SM NA.

MISSED APPROACH: Climbing right turn to 2300 direct LEONS and hold.

AWOS-3 119.275	CHAMPAIGN APP CON * 121.35 285.65	CLNC DEL 121.7	UNICOM 122.7 (CTAF)
--------------------------	---	--------------------------	-------------------------------



<table border="1"> <tr><td>ELEV 697</td><td>TDZE 667</td></tr> <tr><td>HIRL Rwy 3-21</td><td></td></tr> <tr><td>MIRL Rwy 16-34</td><td></td></tr> <tr><td>REIL Rwy 16 and 34</td><td></td></tr> </table>	ELEV 697	TDZE 667	HIRL Rwy 3-21		MIRL Rwy 16-34		REIL Rwy 16 and 34		<table border="1"> <tr><td>2300</td><td>LEONS</td><td>VGSI and descent angles not coincident (VGSI Angle 3.00/TCH 14).</td></tr> <tr><td>1400</td><td>WIVIS 2.2 NM to RW34</td><td>ZOPLO</td></tr> <tr><td>2300</td><td>LEONS</td><td>5 NM Holding Pattern</td></tr> </table>	2300	LEONS	VGSI and descent angles not coincident (VGSI Angle 3.00/TCH 14).	1400	WIVIS 2.2 NM to RW34	ZOPLO	2300	LEONS	5 NM Holding Pattern			
	ELEV 697	TDZE 667																			
HIRL Rwy 3-21																					
MIRL Rwy 16-34																					
REIL Rwy 16 and 34																					
2300	LEONS	VGSI and descent angles not coincident (VGSI Angle 3.00/TCH 14).																			
1400	WIVIS 2.2 NM to RW34	ZOPLO																			
2300	LEONS	5 NM Holding Pattern																			
	<table border="1"> <tr><td>2300</td><td>LEONS</td><td>5 NM Holding Pattern</td></tr> <tr><td>6000</td><td>2300</td><td>345°</td></tr> <tr><td>2300</td><td>6000</td><td>165°</td></tr> <tr><td>2300</td><td>2300</td><td>345°</td></tr> <tr><td>2.2 NM</td><td>2.8 NM</td><td>6.1 NM</td></tr> </table>	2300	LEONS	5 NM Holding Pattern	6000	2300	345°	2300	6000	165°	2300	2300	345°	2.2 NM	2.8 NM	6.1 NM					
2300	LEONS	5 NM Holding Pattern																			
6000	2300	345°																			
2300	6000	165°																			
2300	2300	345°																			
2.2 NM	2.8 NM	6.1 NM																			
<table border="1"> <tr><th>CATEGORY</th><th>A</th><th>B</th><th>C</th><th>D</th></tr> <tr><td>LNAV MDA</td><td>1080-1</td><td>413 (400-1)</td><td>1080-1¼</td><td>413 (400-1¼)</td></tr> <tr><td>CIRCLING</td><td>1160-1</td><td>463 (500-1)</td><td>1240-1½</td><td>1340-2</td></tr> <tr><td></td><td></td><td></td><td>543 (600-1½)</td><td>643 (700-2)</td></tr> </table>	CATEGORY	A	B	C	D	LNAV MDA	1080-1	413 (400-1)	1080-1¼	413 (400-1¼)	CIRCLING	1160-1	463 (500-1)	1240-1½	1340-2				543 (600-1½)	643 (700-2)	
CATEGORY	A	B	C	D																	
LNAV MDA	1080-1	413 (400-1)	1080-1¼	413 (400-1¼)																	
CIRCLING	1160-1	463 (500-1)	1240-1½	1340-2																	
			543 (600-1½)	643 (700-2)																	

EC-3, 15 MAY 2025 to 12 JUN 2025

EC-3, 15 MAY 2025 to 12 JUN 2025