

WAAS CH <b>65721</b> W11A	APP CRS <b>112°</b>	Rwy Idg <b>4697</b> TDZE <b>829</b> Apt Elev <b>838</b>
---------------------------------	------------------------	---

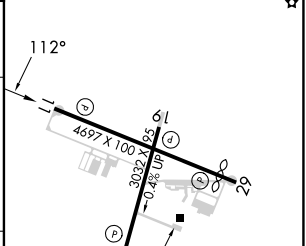
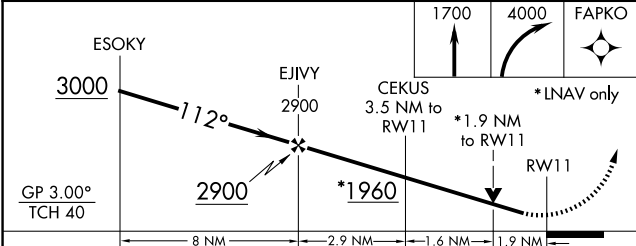
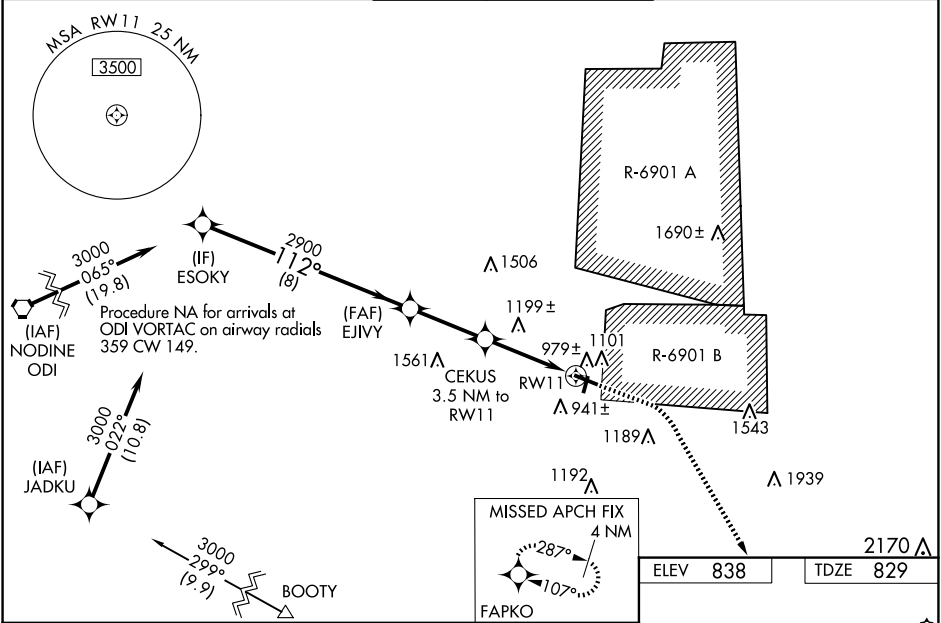
# RNAV (GPS) RWY 11

SPARTA/FORT MC COY (CMY)

**⚠** Circling to Rwy 19 NA at night. Baro-VNAV NA when using La Crosse altimeter setting. For uncompensated Baro-VNAV systems, LNAV/VNAV NA below -16°C (4°F) or above 38°C (100°F). DME/DME RNP-0.3 NA. Visibility reduction by helicopters NA. VDP NA with La Crosse altimeter setting. When local altimeter setting not received, use La Crosse altimeter setting and increase all DA 79 feet and all MDA 80 feet; increase LPV and LNAV/VNAV all Cats and LNAV and Circling Cats C/D visibility ¼ mile. Procedure not authorized when R-6901B active.

**MISSED APPROACH:**  
Climb to 1700 then climbing right turn to 4000 direct FAPKO and hold.

ASOS <b>119.775</b>	VOLK APP CON * <b>135.25 244.875</b>	SPARTA/MC COY TOWER * <b>124.6 254.375</b>	GND CON <b>123.625</b>	CTAF <b>124.6</b>
------------------------	---	---	---------------------------	----------------------



CATEGORY	A	B	C	D
LPV DA	1079-7/8		250 (300-7/8)	
LNAV/VNAV DA	1190-1 1/4		361 (400-1 1/4)	
LNAV MDA	1460-1	631 (700-1)	1460-1 3/4	631 (700-1 3/4)
CIRCLING	1520-1 682 (700-1)	1560-1 722 (800-1)	1620-2 1/4 782 (800-2 1/4)	1860-3 1022 (1100-3)

REIL Rwy 11 and 29  
MRL Rwy 1-19 and 11-29

EC-3, 15 MAY 2025 to 12 JUN 2025

EC-3, 15 MAY 2025 to 12 JUN 2025