

LOC/DME I-BMI 110.95 Chan 46 (Y)	APP CRS 291°	Rwy Idg TDZE Apt Elev	6525 871 871
--	------------------------	-----------------------------	---

ILS or LOC RWY 29

CENTRAL IL RGNL/BLOOMINGTON-NORMAL (BMI)

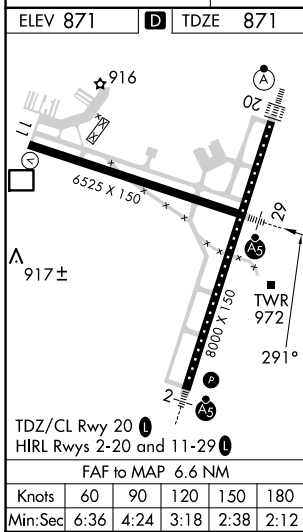
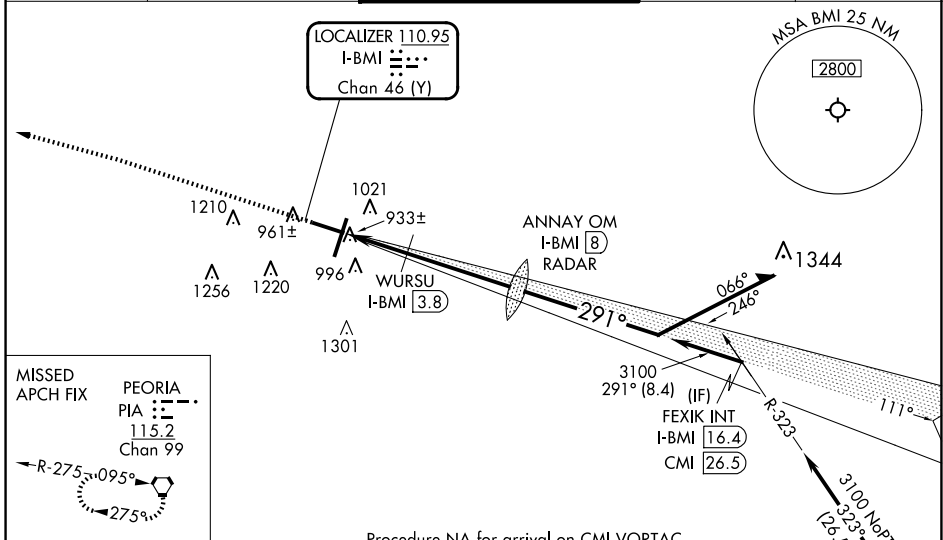
DME required. RADAR required for procedure entry at ANNAY OM.

⚠ VDP NA when using PIA altimeter setting. For inop ALS, increase S-LOC 29 Cats C and D visibility to RVR 5500. When local altimeter setting not received, use PIA altimeter setting; increase S-ILS 29 DA to 1187 feet; increase all MDAs 120 feet and S-LOC 29 visibility Cats C and D to RVR 5000 and Circling visibility Cats C and D ½ SM. For inop ALS when using PIA altimeter setting: increase S-ILS 29 visibility all Cats to RVR 4500 and S-LOC 29 visibility Cats C and D to 1 ½ SM. * RVR 1800 authorized with use of FD or AP or HUD to DA (NA when using PIA altimeter setting).

MALSR

MISSED APPROACH: Climb to 1500 then climbing left turn to 3000 direct PIA VORTAC and hold.

ATIS 119.575	SAINT LOUIS APP CON 128.725 256.9	BLOOMINGTON TOWER * 124.6 (CTAF) 0 269.575	GND CON 121.65	UNICOM 122.95
------------------------	---	---	--------------------------	-------------------------



ELEV 871	D	TDZE 871							
1500 3000 PIA 			ANNAY OM I-BMI (8) RADAR Remain within 10 NM						
WURSU I-BMI (2.4) I-BMI (3.8) I-BMI (1.4)			3019 1700 291° 3100 711° 3100			GS 3.00° TCH 56			
CATEGORY A B C D 0.9 1.5 4.1 NM									
S-ILS 29 *		1071/24 200 (200-½)							
S-LOC 29		1240/24 369 (400-½)		1240/35 369 (400-½)					
<input checked="" type="checkbox"/> CIRCLING		1340-1 469 (500-1)		1620-2¼ 749 (800-2¼)		1620-2½ 749 (800-2½)			

ILS or LOC RWY 29

EC-3, 15 MAY 2025 to 12 JUN 2025

EC-3, 15 MAY 2025 to 12 JUN 2025