

LOC/DME I-LHJ 111.55 Chan 52(Y)	APP CRS 201°	Rwy Idg 8000 TDZE 871 Apt Elev 871
---	------------------------	---

ILS or LOC RWY 20

CENTRAL IL RGNL/BLOOMINGTON-NORMAL (BMI)

ADF or DME or RADAR required for LOC only.
RADAR required for procedure entry at OLIDE.

▼ VDP NA when using PIA altimeter setting. When local altimeter setting not received, use PIA altimeter setting: increase S-ILS 20 DA to 1187 feet and all visibilities to RVR 2400; increase all MDAs 120 feet and S-LOC 20 visibility Cats C and D to RVR 5500 and Circling visibility Cats C and D ¼ SM. For inop ALS when using PIA altimeter setting, increase S-ILS 20 all Cats visibility to RVR 4500 and S-LOC 20 Cats C and D visibility to 1 ½ SM.

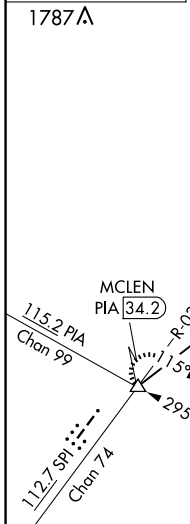
ALSF-2
Ⓜ

MISSED APPROACH: Climb to 1500 then climbing right turn to 3000 on heading 279° and SPI VORTAC R-037 to MCLEN INT/PIA 34.2 DME and hold, continue climb-in-hold to 3000.

ATIS 119.575	SAINT LOUIS APP CON 128.725 256.9	BLOOMINGTON TOWER* 124.6 (CTAF) 269.575	GND CON 121.65	UNICOM 122.95
------------------------	---	---	--------------------------	-------------------------

ALTERNATE MISSED APCH FIX

LOM
EGROW
I-LHJ **4.6**
LH : : : :
334

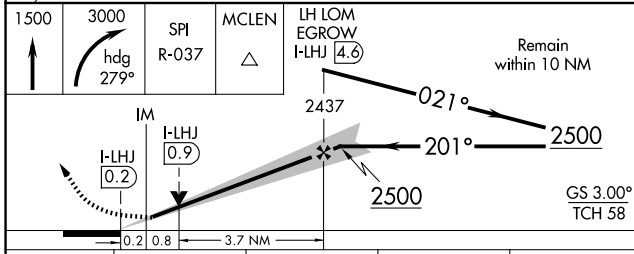
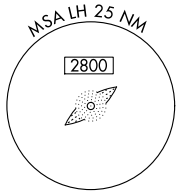


(IF) OLIDE
I-LHJ **10.9**
RADAR

2500 NoPT
201° (6.2)

LOM/IAF
EGROW
334 LH : : : :
I-LHJ **4.6**

LOCALIZER **111.55**
I-LHJ : : : :
Chan **52(Y)**



CATEGORY	A	B	C	D
S-ILS 20	1071/18		200 (200-½)	
S-LOC 20	1260/24	389 (400-½)	1260/35	389 (400-¾)
Ⓜ CIRCLING	1340-1	469 (500-1)	1620-2¼ 749 (800-2¼)	1620-2½ 749 (800-2½)

ELEV 871	TDZE 871
----------	----------

916

6525 X 150

800 X 150

TWR 972

917±

201°

20

29

2

GS 3.00°
TCH 58

TDZ/CL Rwy 20

HIRL Rwy 2-20 and 11-29

FAF to MAP 4.8 NM

Knots	60	90	120	150	180
Min:Sec	4:48	3:12	2:24	1:55	1:36

EC-3, 15 MAY 2025 to 12 JUN 2025

EC-3, 15 MAY 2025 to 12 JUN 2025